



# Gippsland Football Report

Tony Francis



# TABLE OF CONTENTS

Executive Summary	4
Overview	4
Strategic objectives	4
Operational imperatives	5
Current League structures	5
Local Government Areas	5
Football Victoria regional representation	6
Discussion points	6
Participation - General	7
Overview	7
Top LGA'S by participation & market share	7
Discussion points	8
Participation - Female	9
Overview	9
Top LGA'S by female participation & market share	9
Discussion points	10
Competition Structures	11
Football Gippsland Premier Division	11
Competitions	11
West Gippsland	12
South Gippsland	12
East Gippsland	13
Finals	13
Travel	13
<b>Existing club landscape</b>	<b>15</b>
<b>New club possibilities</b>	<b>16</b>
Coaching	18
Discussion points	18
Refereeing	19
Qualified referees	19

Referee education _____	19
Discussion points _____	19
Talented Player Pathways _____	20
NPL _____	20
State League _____	20
TIDC _____	20
Discussion points _____	20
Facilities _____	21
Overview _____	21
Discussion points _____	22
Schools _____	23
Overview _____	23
Discussion points _____	23
PROGRAMS _____	26
Overview _____	26
Discussion points _____	26
APPENDICES _____	27
Appendix 1 – Football Market Share (indicative only, datasets not aligned) _____	27
Appendix 2 – Bass Coast Shire Overview _____	28
Appendix 3 – Baw Baw Shire Overview _____	30
Appendix 4 – Cardinia Shire Overview _____	32
Appendix 5 – East Gippsland Shire Overview _____	34
Appendix 6 – City of Latrobe Overview _____	36
Appendix 7 – South Gippsland Shire Overview _____	38
Appendix 8 – Wellington Shire Overview _____	40

# EXECUTIVE SUMMARY

## Overview

This report has been developed and designed as a document which should provoke discussion and input.

It is intended that it becomes a living document which reflects the voice of all stakeholders in Gippsland football, and can help drive change to help create a better future for our sport in the communities in which we live, work and play.

## Strategic objectives

- To develop clubs in targeted areas, and towns where no club exists.
- To review existing competition structures to ensure they best meet the needs of the wider Gippsland region.
- Expose more regional school children to football in their schools.
- To increase the skills base of regional coaches and referees via ongoing training opportunities.
- To drive a culture of continuous review and improvement of all football facilities in regional Victoria.
- Review pathway programs for talented players – is metro NPL and State League participation the best model?



## Operational imperatives

- Completion of Strategic Plans for all Associations and clubs
- Drive continued improvement at all clubs via the use and review of the FA Game Plan
- Help clubs and associations grow their financial base via the use of grant and other funding sources
- Review of Association operating models
- Creation of educational resources for new entrants (parents) to football
- Flexible coach education options
- Improved coaching qualifications in all levels of regional football
- Greater involvement of professional players (A League) to help create heroes for regional children
- Creation of new facilities to enable the development of new clubs
- Facilities advocacy across all levels of influence and government to drive facilities strategic objectives.
- Flexible formats away from traditional weekend 11v11 (Social Football options)
- Greatly expanded schools' programs
- Creation of specific girls only programs at all levels of football
- Transition of girls MiniRoos programs to both competitive and social streams
- Creation of a regional new coach mentoring program
- Specific regional RESPECT programs
- Specific regional referee recruitment programs Governance

## Current League structures

There are currently two regional Associations which cover Gippsland – the Gippsland Soccer League and the Latrobe Valley Soccer League.

The Gippsland Soccer League is governed by an independent board which is elected by member clubs.

The Latrobe Valley Soccer League is governed by delegates appointed by each club. From this group of 12 executives are appointed.

## Local Government Areas

Gippsland clubs fall under 7 separate local government areas as follows:

- Bass Coast Shire

- Baw Baw Shire Council
- Cardinia Shire Council
- East Gippsland Shire Council
- Latrobe City Council
- Wellington Shire Council
- South Gippsland Shire Council

## Football Victoria regional representation

Football Victoria is represented in Gippsland by a Regional Development Manager. This role is currently occupied by Tony Francis. For the past 18 months this role has also encompassed on the ground coverage for Albury-Wodonga Football Association, Cobram Junior Soccer League and Shepparton Junior Soccer Association and their clubs.

## Discussion points

### *A single administration*

- Economies of scale
- Reduced administration costs
- Less volunteer requirements
- Reduction in fixed costs (rent etc.)
- Governance to remain with the existing regional Associations
- A new regional Association to be created for East Gippsland



# PARTICIPATION - GENERAL

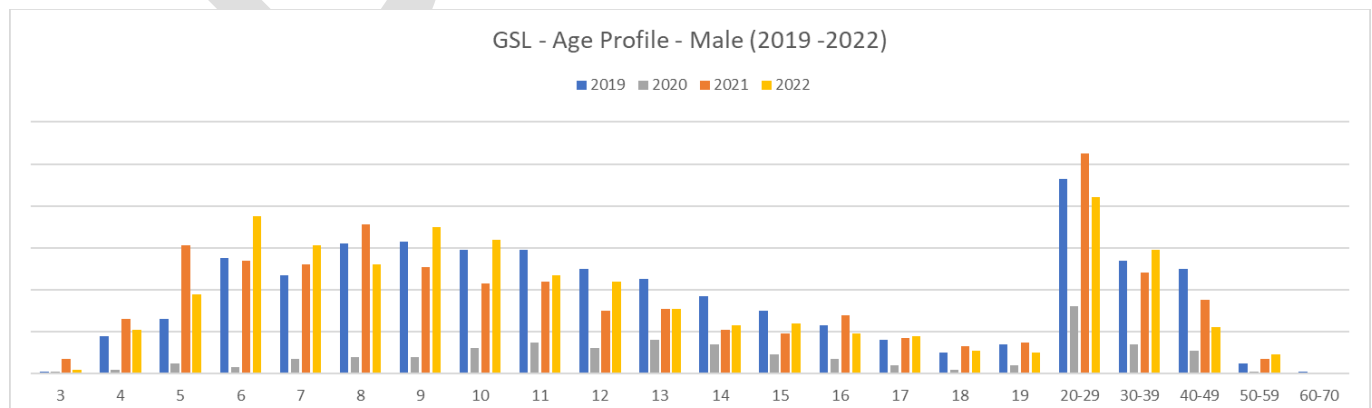
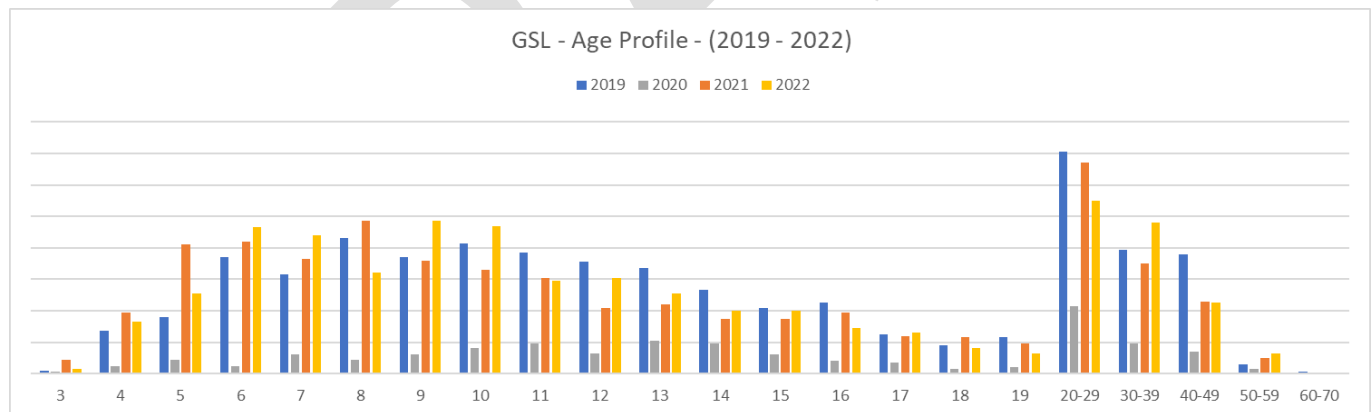
## Overview

Playing numbers on an LGA basis have been driven by general population trends with Baw Baw Shire showing significant growth on the back of significant growth in population, whilst other LGA's have either remained relatively stable, or in the case of Latrobe City shown a significant decline

## Top LGA'S by participation & market share

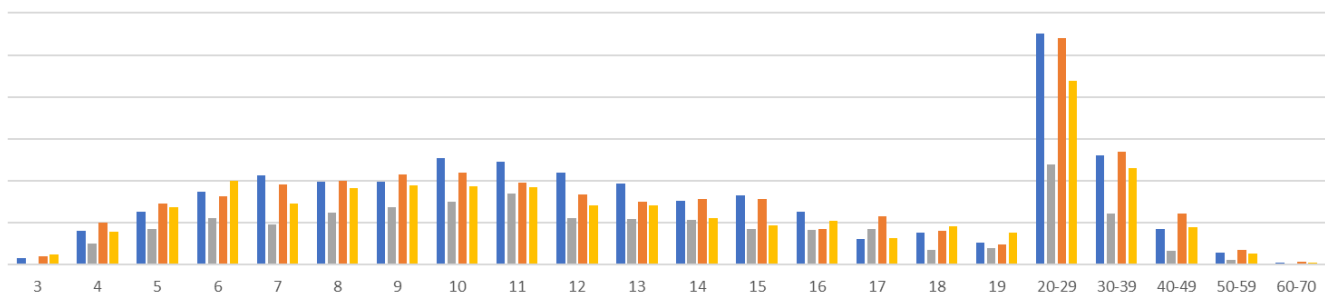
LGA	2019 Total participants	2020 Total participants	2021 Total participants	2022 Total participants	2022 Market Share
Latrobe City Council	1551	921	1410	1247	3.38%
Baw Baw Shire Council	349	151	602	576	2.16%
Cardinia Shire Council	545	234	532	534	0.74%
Bass Coast Shire Council	380	63	352	455	3.13%
South Gippsland Shire Council	392	64	330	280	2.22%
Wellington Shire Council	213	98	218	220	1.06%
East Gippsland Shire Council	97	92	201	81	0.43%

Source: Football Victoria 2019-2022 registration data / Australian Bureau of Statistics 3235.0 Regional Population by Age and Sex, Australia Market Share is the percentage of players from the available playing age population – from 5 years to 45 years



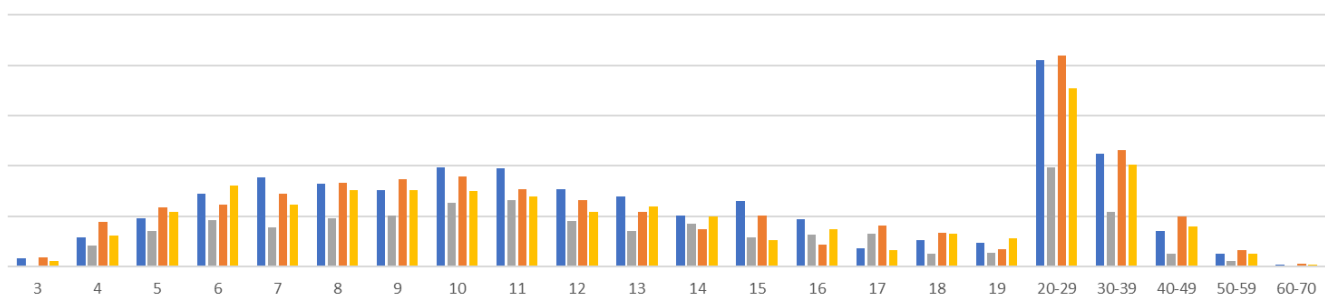
LVSL - Age Profile - (2019 - 2022)

■ 2019 ■ 2020 ■ 2021 ■ 2022



LVSL - Age Profile - Male (2019-2022)

■ 2019 ■ 2020 ■ 2021 ■ 2022



## Discussion points

### *Decreasing player numbers*

- Is travel a disincentive for parents at junior levels?
- To grow the sport into new areas in Gippsland
- To review current league structures.



# PARTICIPATION - FEMALE

## Overview

The female participation percentage across Gippsland is 25.49%. Only 22.84% of the LVSL playing population is made up of women & girls, with the GSL figure standing at 29.75%.

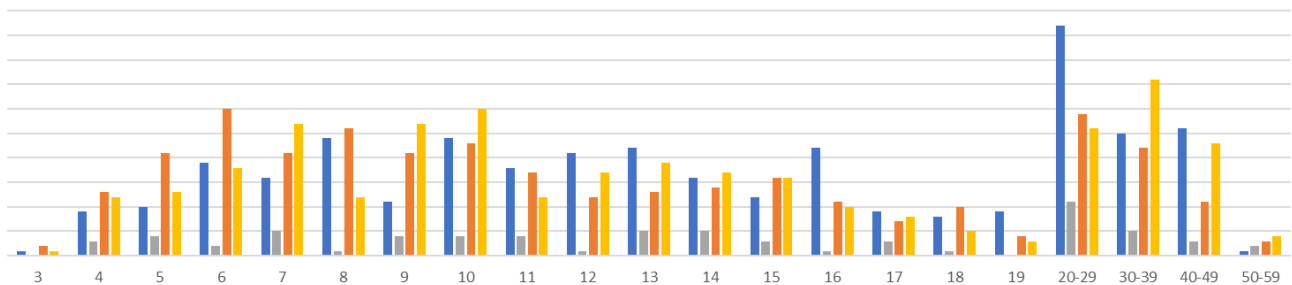
## Top LGA'S by female participation & market share

LGA	2019 Female participants	2020 Female participants	2021 Female participants	2022 Female participants	2022 Female Market Share
Latrobe City Council	373	208	316	253	1.37%
Baw Baw Shire Council	101	32	161	152	1.13%
Cardinia Shire Council	116	32	94	96	0.27%
Bass Coast Shire Council	102	15	106	125	1.71%
South Gippsland Shire Council	130	20	103	110	1.77%
Wellington Shire Council	45	19	56	49	0.50%
East Gippsland Shire Council	23	15	51	16	0.17%

Source: Football Victoria 2019-2022 registration data / Australian Bureau of Statistics 3235.0 Regional Population by Age and Sex, Australia Market Share is the percentage of players from the available playing age population – from 5 years to 45 years

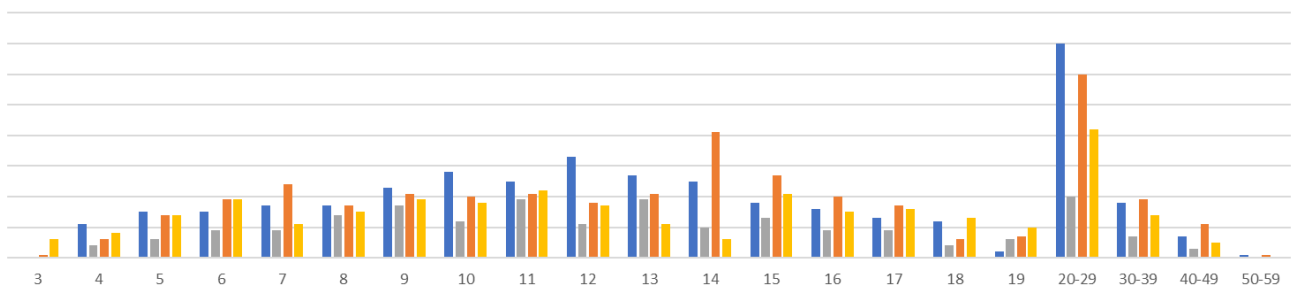
GSL - Age Profile - Female (2019 -2022)

■ 2019 ■ 2020 ■ 2021 ■ 2022



LVSL - Age Profile - Female (2019 -2022)

■ 2019 ■ 2020 ■ 2021 ■ 2022



## Discussion points

### *Very low female participation numbers*

- Increase participation via more social and schools-based programs.
- Increase coaching expertise for competitive offerings

# COMPETITION STRUCTURES

- Access to higher level competition via Warragul United and Latrobe United Women's
- A community football competition covering Gippsland broken initially into 3 regions – West Gippsland, East Gippsland and South Gippsland
- State League clubs:
  - Warragul United Soccer Club
  - Latrobe United Women's FC
- Both of these clubs may enter NPL competitions in the future based on performance

## Football Gippsland Premier Division

- A top division which would offer competition in Open and Women's Gippsland wide
- Admittance to competition by application only
- Applications to be approved by the Regional Football Committee
- Possible structure Year 1
- Premier Open Division – 6 - 8 teams
- Premier Women's Division – 6 teams

## Competitions

- Competitions driven by team entries
- Flexibility in age groups
- Aim to have all age groups from Under 12 to Under 17
- Aim to have at least 2 girls only age groups

## West Gippsland

### *Clubs - Current*

- Churchill United SC
- East Gippsland United FC
- Falcons 2000 SC
- Fortuna 60 SC
- Moe United SC
- Monash Soccer Club
- Morwell Pegasus SC
- Newborough-Yallourn United SC
- Sale United FC
- Traralgon City SC
- Traralgon Olympians SC
- Tyers SC

### *Clubs – Future*

- Churchill United SC
- Falcons 2000 SC
- Fortuna 60 SC
- Moe United SC
- Monash Soccer Club
- Morwell Pegasus SC
- Newborough-Yallourn United SC
- Traralgon City SC
- Traralgon Olympians SC
- Tyers SC

## South Gippsland

### *Clubs - Current*

- Drouin Dragons SC
- Inverloch Stars SC
- Korumburra City SC
- Lang Lang United SC
- Leongatha Knights FC
- Mirboo North United FC
- Phillip Island SC
- Prom Coast SC
- Trafalgar Victory FC Inc.
- Wonthaggi United SC

### *Clubs – Future*

- Bunyip District SC
- Drouin Dragons SC
- Inverloch Stars SC
- Korumburra City SC
- Lang Lang United SC
- Leongatha Knights FC
- Mirboo North United FC
- Phillip Island SC
- Prom Coast SC
- Trafalgar Victory FC Inc.
- Wonthaggi United SC
- Yarram SC

*Clubs - Future***East Gippsland**

- East Gippsland United FC
- Lakes Entrance FC
- Maffra FC
- Orbost FC
- Paynesville FC
- Sale United FC

Club moved

New club

**Finals**

- There would be the possibility of playing Regional Grand Finals the week prior to the Premier Division Grand Final, then having a Grand Final Day which incorporated Premier Division Grand Finals, and Regional Play-Off Grand Finals

**Travel***Premier Division*

Premier division travel requirements would be dependent on team entries

*West Gippsland*

Club	Current*	Future*
Churchill United SC	400km	184km
East Gippsland United	1,408km	N/A
Falcons 2000 SC	307km	110km
Fortuna 60 SC	307km	110km
Moe United SC	398km	173km
Monash Soccer Club	379km	160km
Morwell Pegasus SC	307km	110km
Newborough-Yallourn Utd	379km	160km
Sale United FC	737km	N/A
Traralgon City SC	327km	152km
Traralgon Olympians SC	327km	152km
Tyers SC	334km	149km

\*Current based on 22 week home & away season

\*Future based on 18 week home & away season

*West Gippsland*

Club	Current*	Future*
Bunyip District SC	N/A	810km
Drouin Dragons SC	578km	719km
Inverloch Stars SC	457km	637km
Korumburra City SC	394km	552km
Lang Lang United SC	540km	709km
Leongatha Knights FC	408km	565km
Mirboo North United FC	513km	686km
Phillip Island SC	736km	975km
Prom Coast SC	808km	965km
Trafalgar Victory FC Inc.	628km	800km
Wonthaggi United SC	490km	687km
Yarram SC	N/A	1,221km

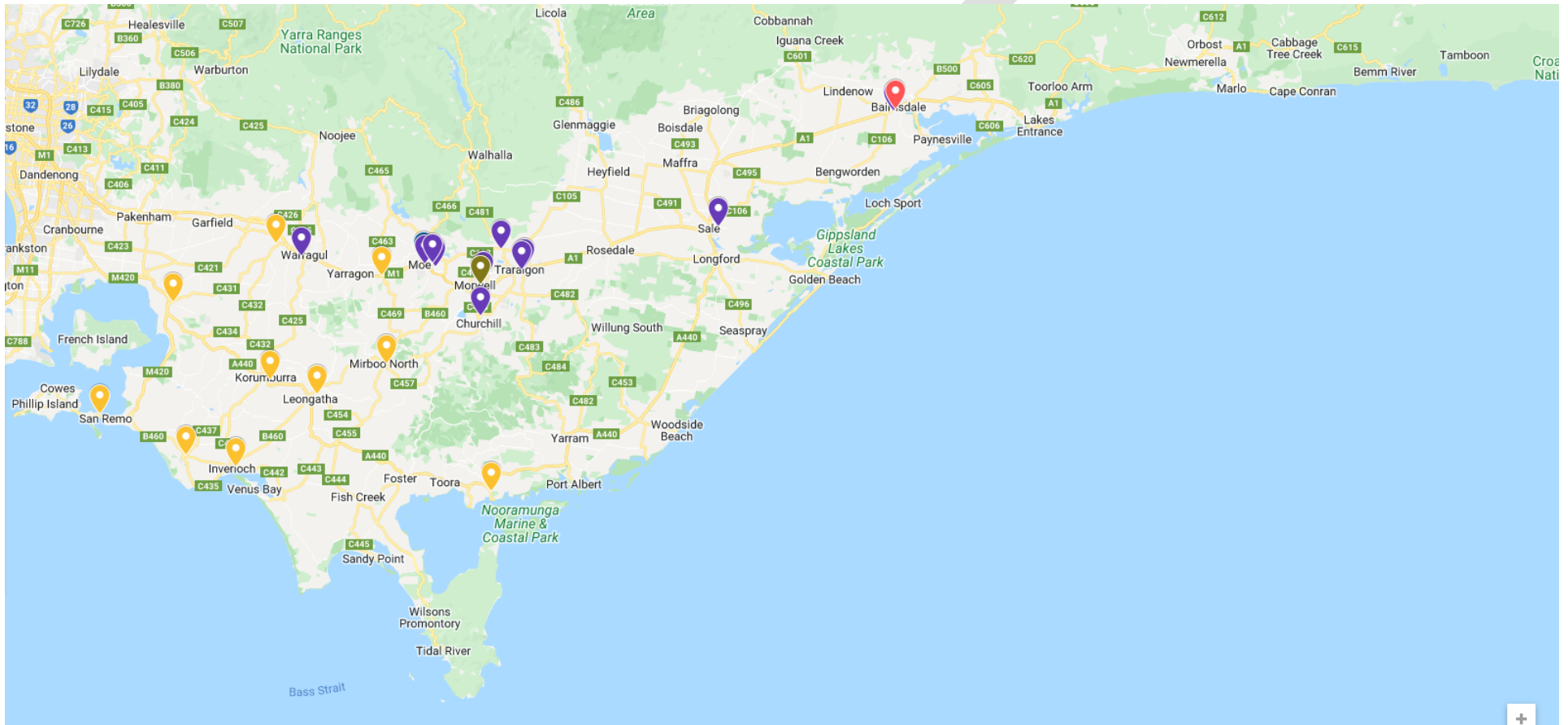
\*Current based on 18 week home & away season

\*Future based on 22 week home & away season

*East Gippsland*

Club	Current*	Future*
East Gippsland United	1,408km	572km
Lakes Entrance FC	N/A	720km
Maffra FC	N/A	826km
Orbost FC	N/A	1,134km
Paynesville FC	N/A	658km
Sale United FC	737km	870km

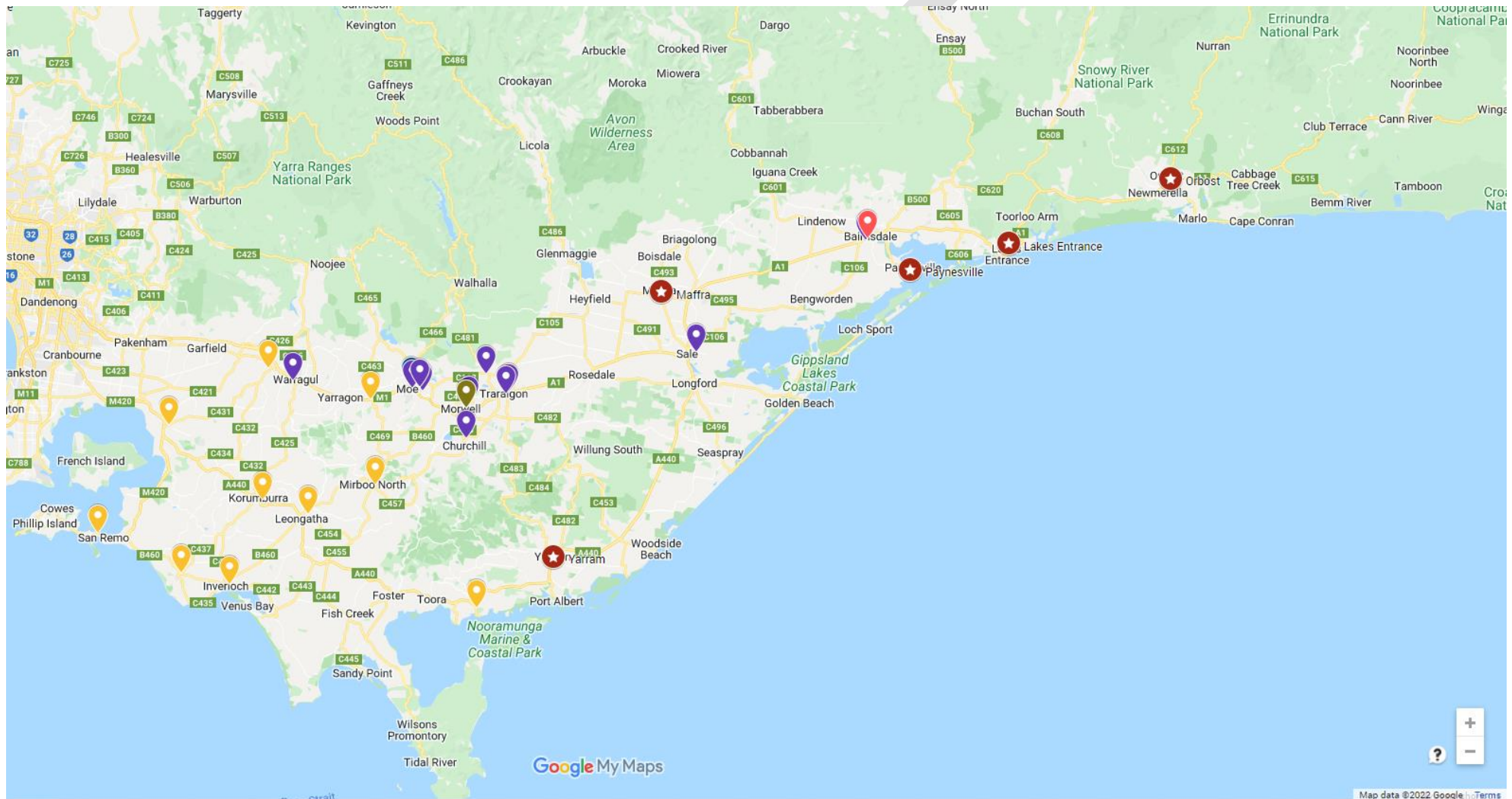
## EXISTING CLUB LANDSCAPE



- Gold: Gippsland Soccer League clubs  
Pink: Bairnsdale Futsal  
Purple: Latrobe Valley Soccer League clubs



# NEW CLUB POSSIBILITIES



Potential new clubs are signified with a star icon

The following five locations identified on the map above with stars are those which have been identified as being possible locations for new clubs. These locations all have populations in excess of 2,000 people:

- Lakes Entrance
- Maffra
- Orbost
- Paynesville
- Yarram

If we were to successfully create clubs in these locations, there would need to be a review of existing competition structures to be able to adequately support these clubs.

# COACHING

## Discussion points

### *Better qualified coaches*

- Education programs for new parents to the sport
- Online coaching course availability
- Management of coach education back end portal to be made available to Regional Development Managers

# REFEREEING

## Qualified referees

There are 343 registered referees in regional Victoria. Of these 22 are currently inactive, leaving a total 321 referees. There are 168 registered for 18 and over ages with 62 of these being either junior or 1<sup>st</sup> season referees. The remaining 155 referees are registered for 17 and underage groups.

## Referee education

Referee courses are run in regional centres where demand exists. The challenge for everyone is to create an environment where there is greater demand.

## Discussion points

### *Gippsland*

- Involve referees in the league and association decision making structures
- Increased promotion of refereeing to all segments of the community

# TALENTED PLAYER PATHWAYS

## NPL

### *Gippsland*

Gippsland FC – NPL Junior Boys

## State League

### *Gippsland*

- Warragul United – State League 1
- Latrobe United Women's State League 3

## TIDC

### *Gippsland*

The TIDC programs in Gippsland have reverted to the new FV structure

## Discussion points

### *Clearer pathway*

- To create better pathways at all levels of the game, finally funnelling into top level competitive structures

### *Easier movement between levels*

- To create better relationships between top level and community clubs
- Help foster an understanding in community clubs that young players moving to a club at a higher level is a good thing

# FACILITIES

## Overview

Facilities issues and needs are captured in the following individual Local Government Area action plans and through the SFA Facility Audit Tool.

- **Bass Coast Shire**

- Newhaven Recreation Reserve
- Thompson Estate Reserve
- Wonthaggi Recreation Reserve

Phillip Island Breakers SC  
Inverloch Stars SC  
Wonthaggi United SC

- **Baw Baw Shire Council**

- Baxter Reserve
- Bellbird Park Recreation Reserve
- Geoff Watt Track
- Trafalgar Recreation Reserve

Warragul United SC  
Drouin SC  
Warragul United SC  
Trafalgar Victory FC

- **Cardinia Shire Council**

- Bunyip Showgrounds Reserve
- Lang Lang Community Recreation Precinct
- Lang Lang Showgrounds

Bunyip Strikers SC  
Lang Lang United SC  
Lang Lang United SC

- **East Gippsland Shire Council**

- Howitt Park
- West Bairnsdale Oval
- WORLD Centre

East Gippsland United FC  
East Gippsland United FC  
East Gippsland United FC

- **Latrobe City Council**

- Crinigan Road South Reserve
- Harold Preston Reserve
- Hazelwood South Reserve
- Gippsland Sports & Entertainment Precinct
- Maryvale Reserve
- Olympic Park
- Ronald Reserve
- Tyers Recreation Reserve

Fortuna 60 SC  
Traralgon City & Traralgon Olympians  
Churchill United SC  
Falcons 2000 & Gippsland FC  
Latrobe United WFC  
Moe United SC  
Morwell Pegasus SC  
Tyers Lightning SC

- W.H. Burrage Reserve
  - W.H. Corrigan Reserve
  - South Gippsland Shire Council
    - Arthur Sutherland Reserve
    - Korumburra Recreation Reserve
    - Mary Mckillop Ground
    - Mirboo North Recreation Reserve
  - Wellington Shire Council
    - Baldwin Reserve
- Newborough-Yallourn United SC  
Monash SC  
  
Prom Coast SC  
Korumburra City SC  
Leongatha Knights SC  
Mirboo North United SC  
  
Sale United SC

## Discussion points

### *Facilities*

- Complete audits for all facilities
- Develop needs analyses for all facilities
- Source masterplans (if in existence)
- Work with individual councils to develop funding plans



# SCHOOLS

## Overview

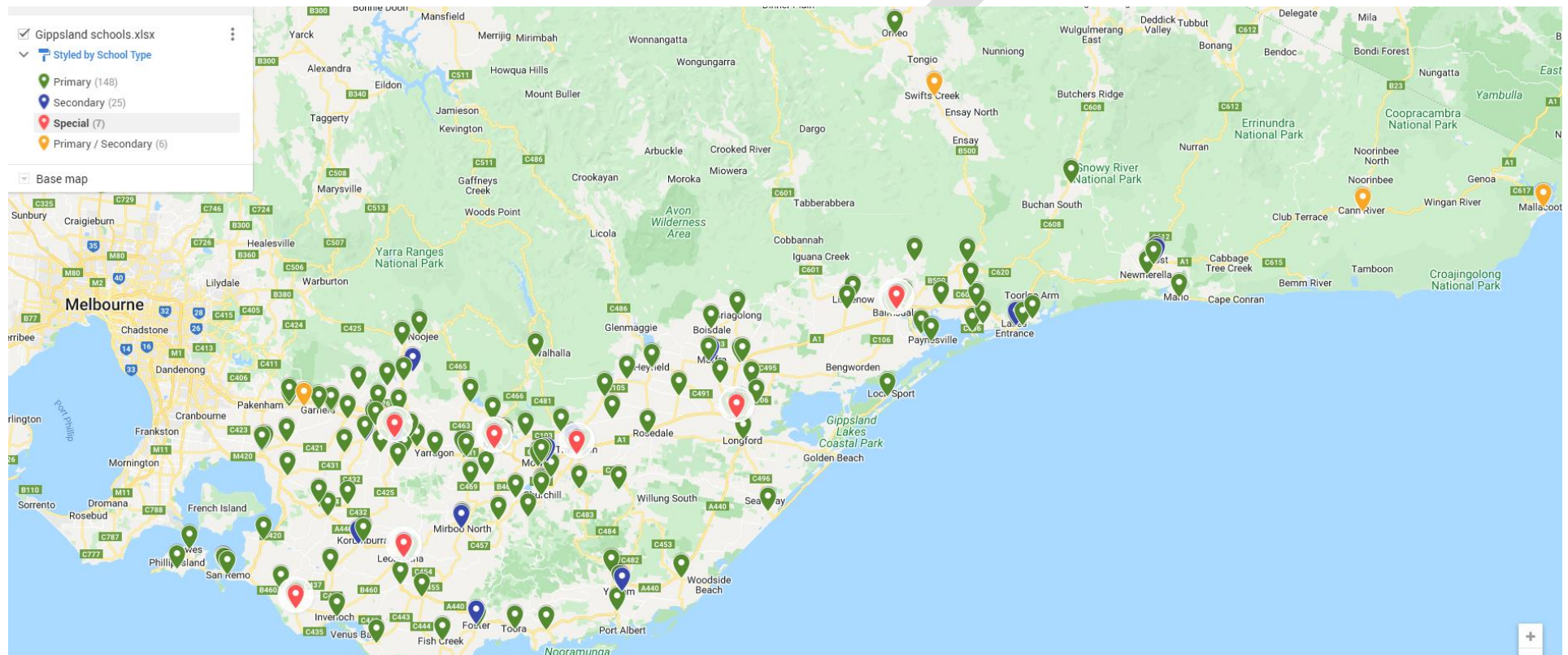
There are 191 schools in the Gippsland region, 149 Primary, 7 P-12, 27 Secondary and 7 Special.

## Discussion points

### *Gippsland*

- Attempt to secure ongoing Positive Start funding.
- Target at least one clinic (either individual or joint) per school per year
- Higher value schools (target areas/more students) might have multiple clinics per year
- Teachers to be trained via online portal
- Updated Football Fever lesson plans to be provided to teachers
- Teachers to be linked with a "football mentor"

# GIPPSLAND SCHOOLS MAP



# GIPPSLAND SCHOOLS PARTICIPATION ANALYSIS

Club/Club Hub	Primary players 2021	Secondary players 2021	Primary students 2021	Secondary students 2021	Primary/Secondary students 2021	Special students 2021	Football school penetration Primary	Football school penetration Secondary
Tyers	59	9	293	0	0	0	20.14%	
Inverloch SC	91	23	520	0	0	0	17.50%	
Falcons/Fortuna/Pegasus	122	78	1100	1112	0	0	11.09%	7.01%
Moe/Monash/Newborough	149	47	1517	906	0	176	9.28%	4.73%
Traralgon City/Olympians	233	67	2590	2190	0	72	8.87%	3.01%
Churchill United	77	9	871	0	0	0	8.84%	
Prom Coast	37	6	433	257	0	0	8.55%	2.33%
Mirboo North United	33	3	393	381	0	0	8.40%	0.79%
Drouin	187	45	1763	1429	1553	0	7.36%	2.04%
Warragul	165	21	1562	1871	1370	122	7.15%	0.80%
Sale United	105	56	1750	2668	0	74	5.88%	2.07%
Leongatha Knights	52	35	889	1223	0	60	5.66%	2.79%
Korumburra City	38	13	868	348	0	0	4.38%	3.74%
Phillip Island SC	66	29	1115	0	931	0	4.18%	6.23%
Trafalgar	34	1	855	731	0	0	3.98%	0.14%
Wonthaggi United	36	11	907	1502	0	69	3.82%	0.72%
Lang Lang United	34	11	955	1104	0	0	3.56%	1.00%
East Gippsland United	39	61	1928	1952	101	96	1.92%	2.97%
Bunyip	14	17	1080	0	265	0	1.15%	12.83%
Lakes Entrance	0	0	914	270	0	0	0.00%	0.00%
Maffra	0	0	1284	544	0	0	0.00%	0.00%
Orbost	0	0	302	222	47	0	0.00%	0.00%
Paynesville	0	0	280	0	0	0	0.00%	
Yarram	0	0	326	327	0	0	0.00%	0.00%

# PROGRAMS

## Overview

Programs include MiniRoos, Soccer Mums, Diversity & Inclusion and Indigenous.

Most clubs in regional Victoria are running some sort of MiniRoos program, whether it be Kick Off, or their own hybrid versions. There are also a handful of MiniRoos Kick Off programs which are not being run within existing club structures.

Soccer Mums uptake has been patchy in regional Victoria with some areas enthusiastically embracing the program, which there has been virtually no penetration in other regions.

Diversity and Indigenous programs are few and far between in regional Victoria.

## Discussion points

### *Gippsland*

- Investigate Gippsland wide partnership models for specialist programs

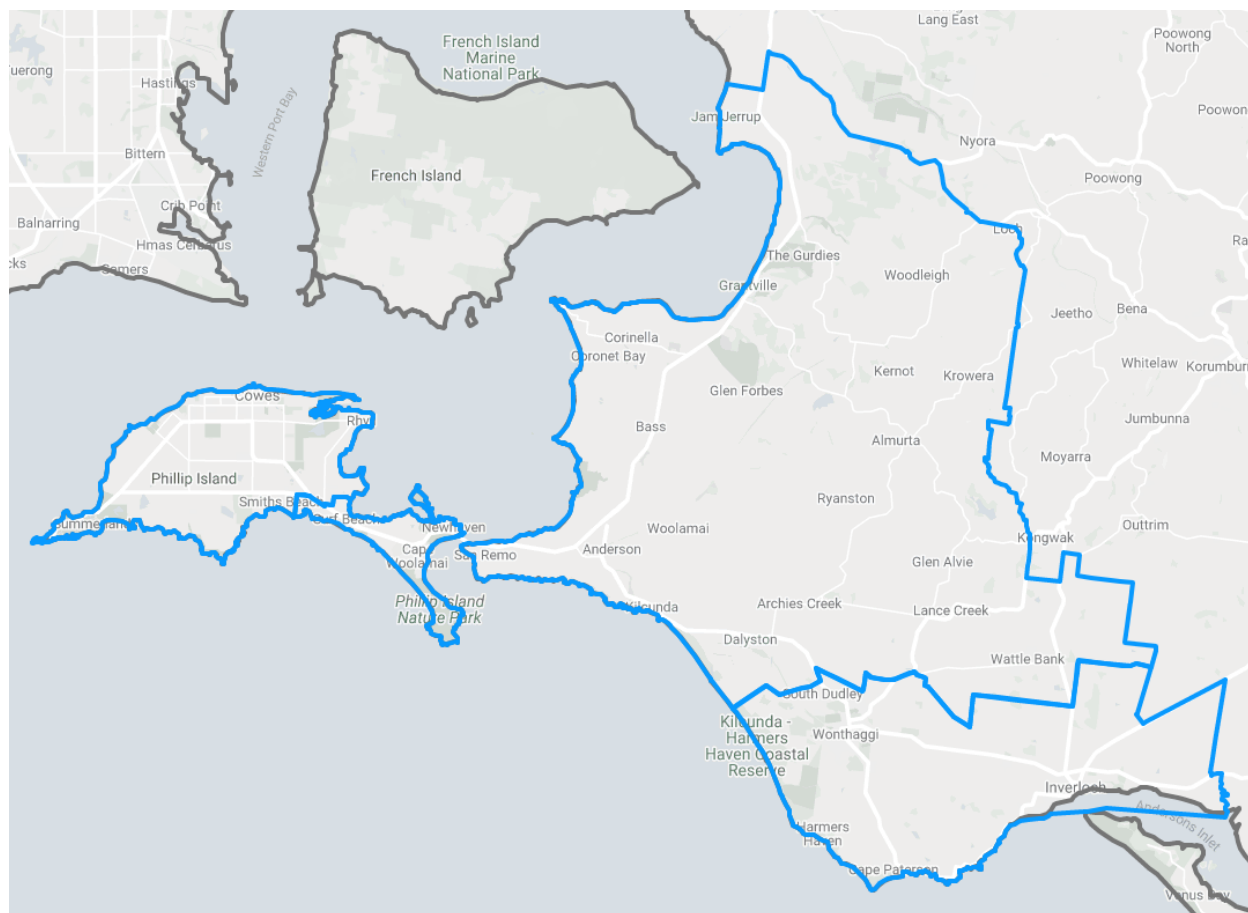
# APPENDICES

## Appendix 1 – Football Market Share (indicative only, datasets not aligned)

Region Name	Sport Participation Rate #	Football Participants #	Market Share	Population Persons
Latrobe (C)	13,680	1437	11%	73,548
Bass Coast (S)	5,542	353	6%	32,033
Baw Baw (S)	9,561	640	7%	46,638
South Gippsland (S)	8,727	330	4%	27,706
East Gippsland (S)	7,743	203	3%	43,995
Cardinia (S)	15,269	532	3%	90,884
Wellington (S)	8,855	220	2%	41,965

Source: Football participants - Football Victoria 2021 registration data / Other sport participation rates - 2016 Sport & Recreation Spatial percentage participation rates overlaid with current population.

## Appendix 2 – Bass Coast Shire Overview



**Overview:** The Bass Coast Shire is located in the south-eastern part of the state. It covers an area of 866 square kilometres and in June 2018 had a population of 35,327. It includes the towns of Bass, Cape Paterson, Cape Woolamai, Corinella, Coronet Bay, Cowes, Inverloch, Kilcunda, Lang Lang, Newhaven, Rhyll, San Remo, Summerlands and Wonthaggi as well as the historic locality of Krowera. It also includes the popular tourist destination Phillip Island.

**Current clubs:** Inverloch Stars SC, Phillip Island SC, Wonthaggi United SC

**Towns over 2,000 population:** Cowes, Inverloch, Wonthaggi

## LGA Bass Coast (S)

Source: Victoria In Future 2019

Contact: David Sykes (DELWP) 03 8683 0936 | david.sykes@delwp.vic.gov.au



Endowment, Land, Water and Planning

## Key Indicators: Population, Households and Dwellings

	2016	2018*	2021	2026	2031	2036
Total Population	33,460	35,330	37,660	41,210	44,810	48,140
Total Households	15,410		17,430	19,270	21,180	22,940
Household size**	2.14		2.13	2.10	2.08	2.05
Total dwellings	25,810		29,030	31,790	34,540	37,040
Occupancy ***	59.7%		60.0%	60.6%	61.3%	61.9%

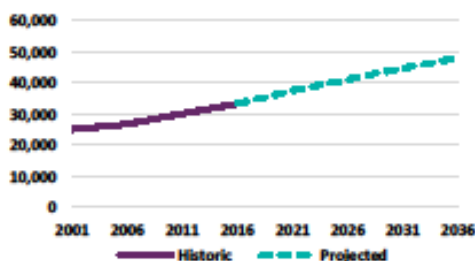
\* Population data only for 2018 \*\* Average persons/household \*\*\* Proportion of total dwellings occupied

## Population change

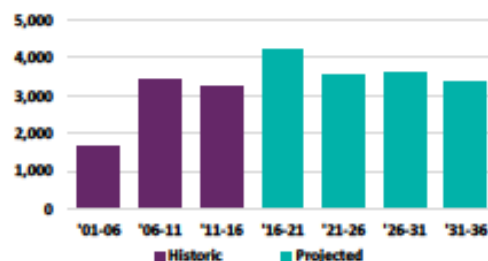
	2001-06	2006-11	2011-16	2016-21	2021-26	2026-31	2031-36
Absolute change	1,660	3,400	3,230	4,200	3,550	3,600	3,330
Annual average rate	1.3%	2.4%	2.1%	2.4%	1.8%	1.7%	1.4%
Natural Increase*	-90	10	50	-280	-470	-700	-920
Net Migration**	1,750	3,390	3,190	4,480	4,020	4,300	4,260

\* Historical based on calendar year births and deaths \*\* Implied net (change not explained by natural increase)

## Historic and projected population

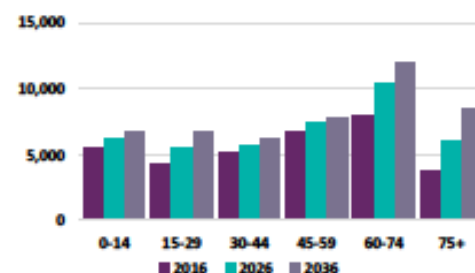


## Population change



## Population by age

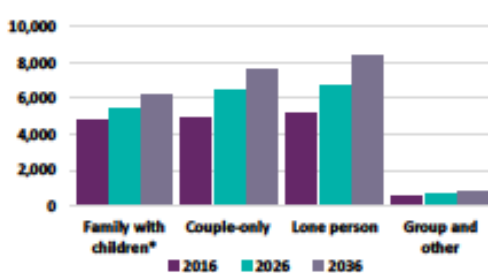
	2016	2026	2036
0-14	5,380	6,200	6,730
15-29	4,340	5,390	6,730
30-44	5,090	5,650	6,250
45-59	6,750	7,360	7,810
60-74	7,920	10,420	12,040
75+	3,780	5,990	8,560



## Households by type

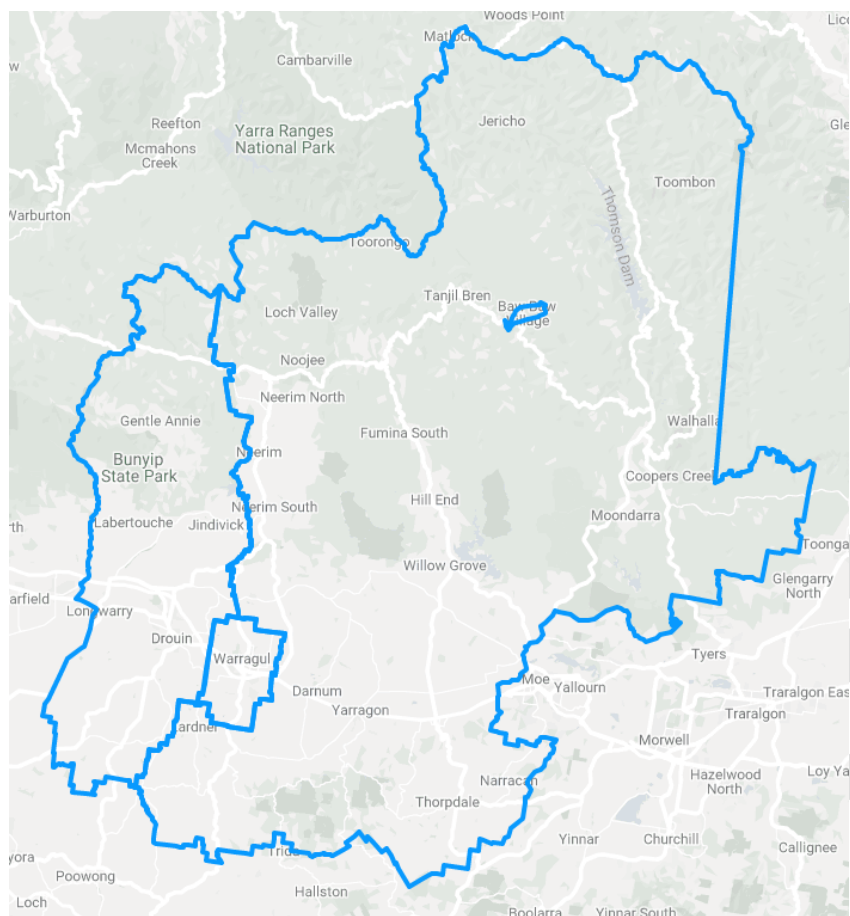
	2016	2026	2036
Family with children*	4,810	5,430	6,180
Couple-only	4,900	6,410	7,640
Lone person	5,180	6,780	8,330
Group and other	520	650	790
Total	15,410	19,270	22,940

\* Includes couples with children &amp; single parent households





## Appendix 3 – Baw Baw Shire Overview



**Overview:** The Shire of Baw Baw is in the eastern part of the state. It covers an area of 4,028 square kilometres and in June 2018 had a population of 52,015.

It includes the towns of Drouin, Longwarry, Neerim South, Trafalgar, Warragul and Yarragon. The Shire is named after the major geographical feature in the region, the Baw Baw Plateau with Mount Baw Baw being the second highest peak in the region.

**Current clubs:** Drouin Dragons SC, Trafalgar Victory FC, Warragul United SC

**Towns over 2,000 population:** Drouin, Trafalgar, Warragul

## LGA Baw Baw (S)

Source: Victoria In Future 2019

Contact: David Sykes (DELWP) 03 8683 0936 | david.sykes@delwp.vic.gov.au

Endowment,  
Land, Water  
and Planning

## Key Indicators: Population, Households and Dwellings

	2016	2018*	2021	2026	2031	2036
Total Population	49,300	52,020	55,900	62,430	69,320	75,820
Total Households	20,000		22,770	25,380	28,680	31,740
Household size**	2.44		2.43	2.42	2.39	2.36
Total dwellings	20,880		23,750	26,640	29,840	33,000
Occupancy ***	95.8%		95.9%	96.0%	96.1%	96.2%

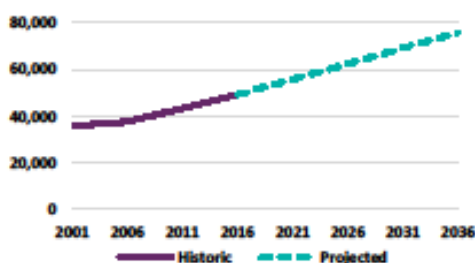
\* Population data only for 2018 \*\* Average persons/household \*\*\* Proportion of total dwellings occupied

## Population change

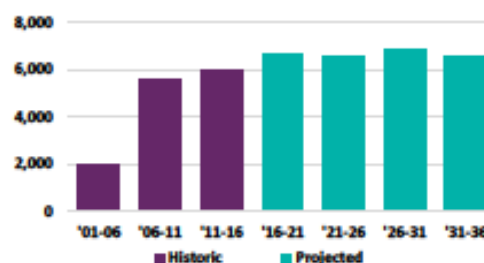
	2001-06	2006-11	2011-16	2016-21	2021-26	2026-31	2031-36
Absolute change	1,980	5,380	5,910	6,600	6,530	6,890	6,500
Annual average rate	1.1%	2.8%	2.6%	2.5%	2.2%	2.1%	1.8%
Natural Increase*	720	890	1,140	1,120	1,080	830	660
Net Migration**	1,260	4,700	4,770	5,480	5,450	6,040	5,830

\* Historical based on calendar year births and deaths \*\* Implied net (change not explained by natural increase)

## Historic and projected population

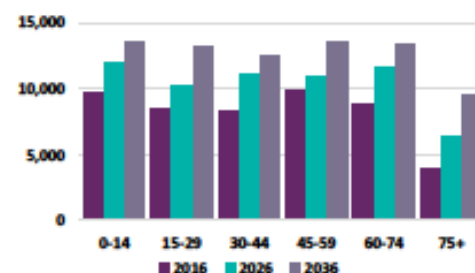


## Population change



## Population by age

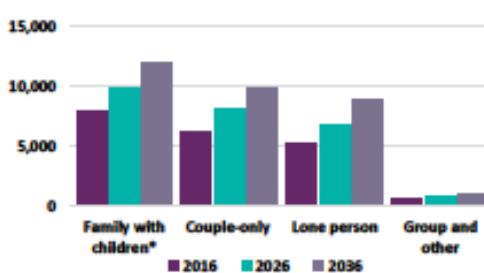
	2016	2026	2036
0-14	9,670	12,020	13,560
15-29	8,370	10,260	13,240
30-44	8,340	11,140	12,500
45-59	9,960	10,920	13,520
60-74	8,830	11,700	13,440
75+	3,940	6,380	9,530



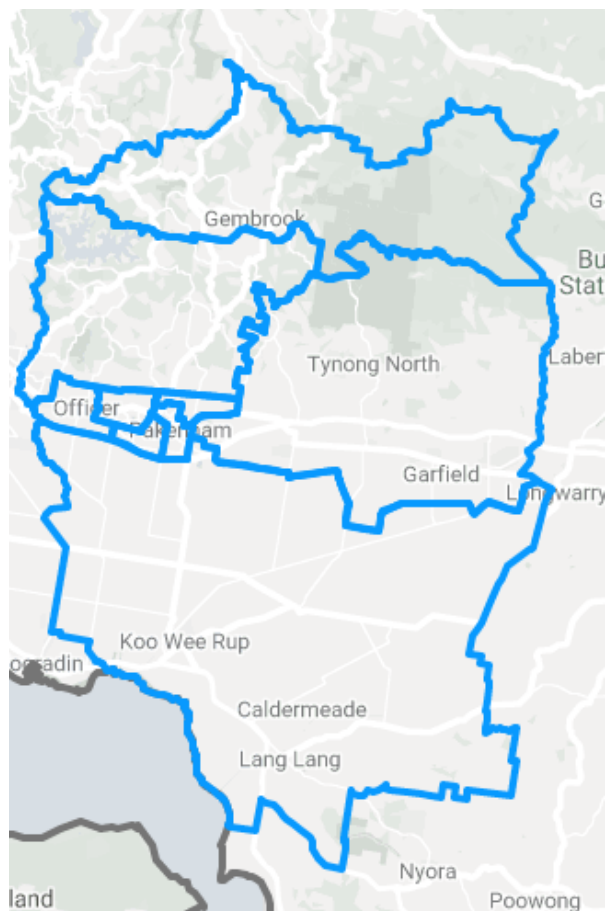
## Households by type

	2016	2026	2036
Family with children*	7,990	9,870	11,960
Couple-only	6,250	8,100	9,960
Lone person	5,150	6,850	8,830
Group and other	610	760	970
Total	20,000	25,580	31,740

\* Includes couples with children &amp; single parent households



## Appendix 4 – Cardinia Shire Overview



**Overview:** The Shire of Cardinia is a local government area in Victoria, Australia, in the south-east of Melbourne between Western Port and the Yarra Ranges on the outskirts of Melbourne. It has an area of 1,283 square kilometres and had a population of 107,120 in June 2018.

**Current clubs:** Bunyip District SC, Lang Lang United SC, Officer City SC, Pakenham United FC

**Towns over 2,000 population:** Beaconsfield Upper, Koo Wee Rup, Officer, Pakenham

## LGA Cardinia (S)

Source: Victoria In Future 2019

Contact: David Sykes (DELWP) 03 8683 0936 | david.sykes@delwp.vic.gov.au



Endowment,  
Lease, Water  
and Planning

### Key Indicators: Population, Households and Dwellings

	2016	2018*	2021	2026	2031	2036
Total Population	97,570	107,120	122,700	144,560	163,330	177,870
Total Households	34,710		43,960	51,860	59,070	65,490
Household size**	2.80		2.78	2.77	2.75	2.70
Total dwellings	35,380		44,830	52,920	60,290	66,840
Occupancy ***	98.1%		98.0%	98.0%	98.0%	98.0%

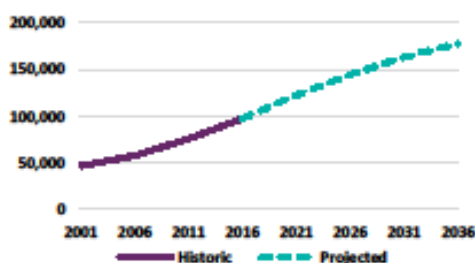
\* Population data only for 2018 \*\* Average persons/household \*\*\* Proportion of total dwellings occupied

### Population change

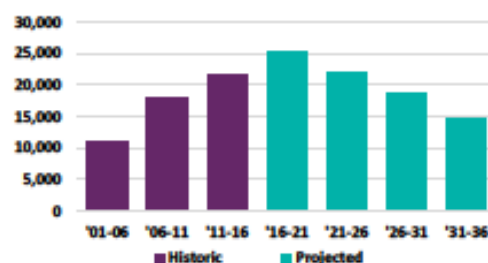
	2001-06	2006-11	2011-16	2016-21	2021-26	2026-31	2031-36
Absolute change	11,070	17,930	21,740	23,130	21,860	18,770	14,540
Annual average rate	4.3%	5.5%	5.2%	4.7%	3.3%	2.5%	1.7%
Natural Increase*	2,310	3,490	5,000	6,580	7,640	7,200	6,250
Net Migration**	8,770	14,440	16,740	18,550	14,220	11,580	8,290

\* Historical based on calendar year births and deaths \*\* Implied net (change not explained by natural increase)

### Historic and projected population

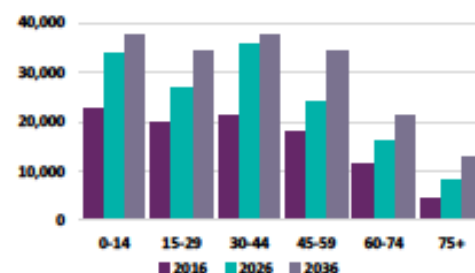


### Population change



### Population by age

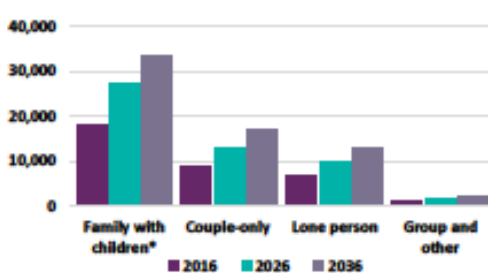
	2016	2026	2036
0-14	22,840	33,810	37,570
15-29	20,010	26,590	34,460
30-44	21,140	35,620	37,500
45-59	18,020	24,220	34,390
60-74	11,310	16,000	20,970
75+	4,250	8,320	12,990



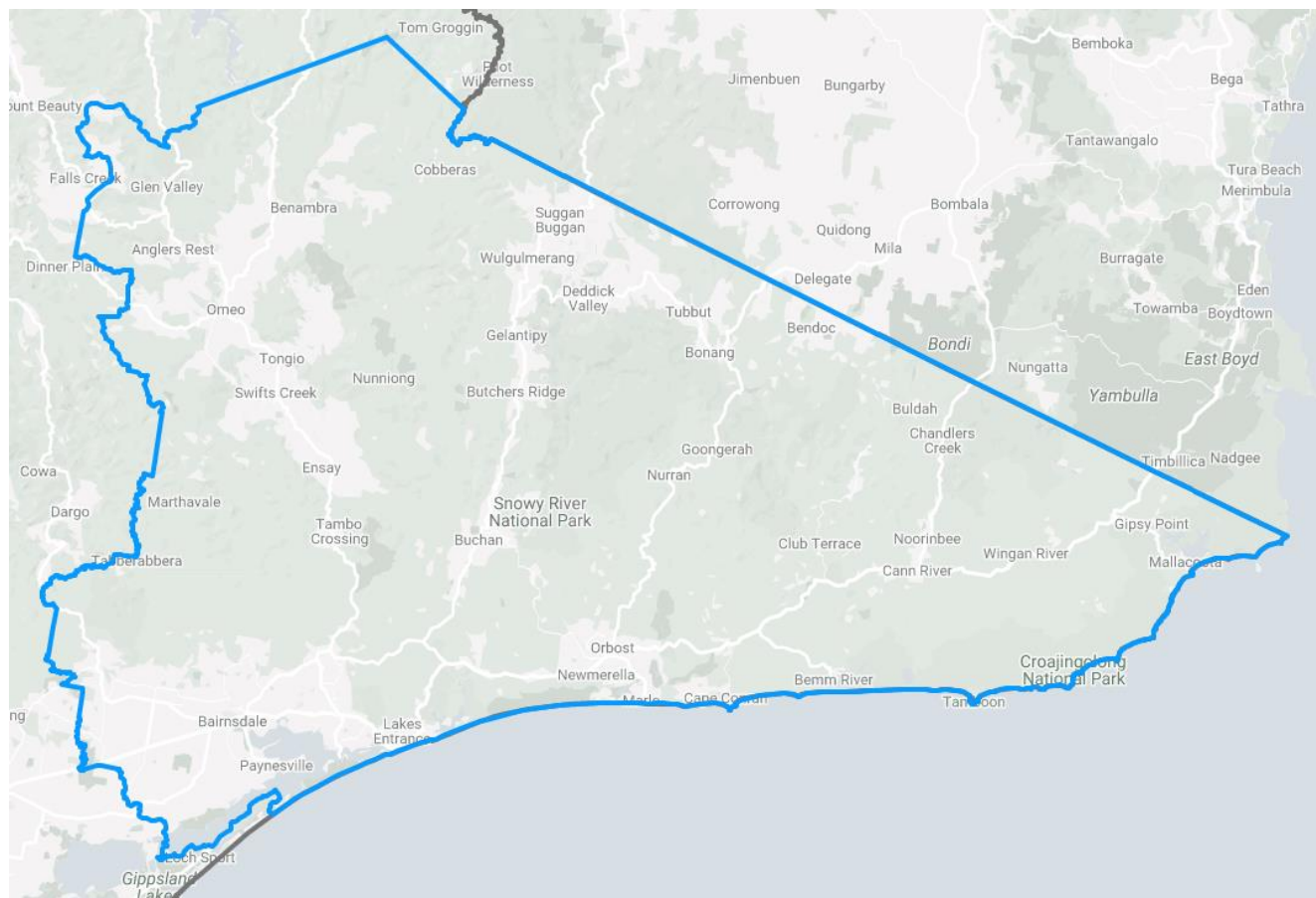
### Households by type

	2016	2026	2036
Family with children*	18,230	27,330	33,580
Couple-only	8,830	13,120	17,050
Lone person	6,540	9,860	12,910
Group and other	1,100	1,550	1,950
Total	34,700	51,860	65,490

\* Includes couples with children & single parent households



## Appendix 5 – East Gippsland Shire Overview



**Overview:** The Shire of East Gippsland is located in the eastern part of the state. It covers an area of 20,940 square kilometres and in June 2018 had a population of 46,818.

It includes the towns of Bairnsdale, Benambra, Bruthen, Buchan, Ensay, Lakes Entrance, Mallacoota, Metung, Omeo, Orbest, Paynesville, Swan Reach and Swifts Creek.

**Current clubs:** Bairnsdale SC (Futsal), East Gippsland United FC

**Towns over 2,000 population:** Bairnsdale, Lakes Entrance, Orbest, Paynesville

## LGA East Gippsland (S)

Source: Victoria In Future 2019

Contact: David Sykes (DELWP) 03 8683 0936 | david.sykes@delwp.vic.gov.au



Endowment,  
Lease, Water  
and Planning

### Key Indicators: Population, Households and Dwellings

	2016	2018*	2021	2026	2031	2036
Total Population	45,600	46,820	48,320	50,730	53,420	55,960
Total Households	20,630		22,030	23,320	24,730	26,070
Household size**	2.18		2.16	2.14	2.12	2.11
Total dwellings	24,090		25,720	27,220	28,860	30,460
Occupancy ***	85.6%		85.7%	85.7%	85.7%	85.6%

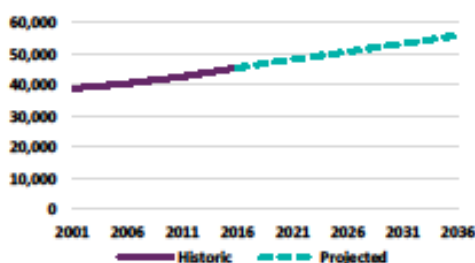
\* Population data only for 2018 \*\* Average persons/household \*\*\* Proportion of total dwellings occupied

### Population change

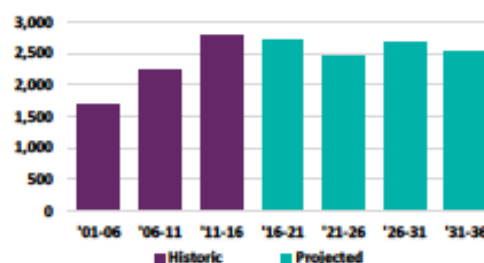
	2001-06	2006-11	2011-16	2016-21	2021-26	2026-31	2031-36
Absolute change	1,680	2,230	2,770	2,720	2,440	2,670	2,540
Annual average rate	0.8%	1.1%	1.3%	1.2%	1.0%	1.0%	0.9%
Natural Increase*	20	100	10	-200	-390	-710	-1,040
Net Migration**	1,660	2,130	2,760	2,920	2,830	3,380	3,580

\* Historical based on calendar year births and deaths \*\* Implied net (change not explained by natural increase)

### Historic and projected population

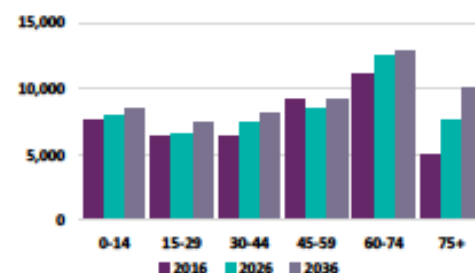


### Population change



### Population by age

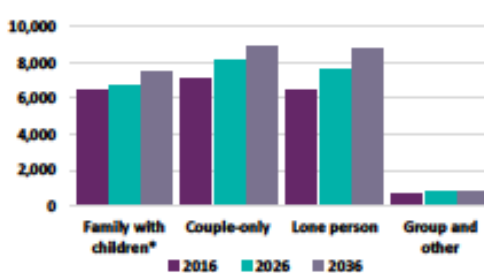
	2016	2026	2036
0-14	7,340	8,050	8,400
15-29	6,340	6,630	7,370
30-44	6,420	7,450	8,060
45-59	9,250	8,490	9,120
60-74	11,030	12,340	12,870
75+	5,040	7,590	10,130



### Households by type

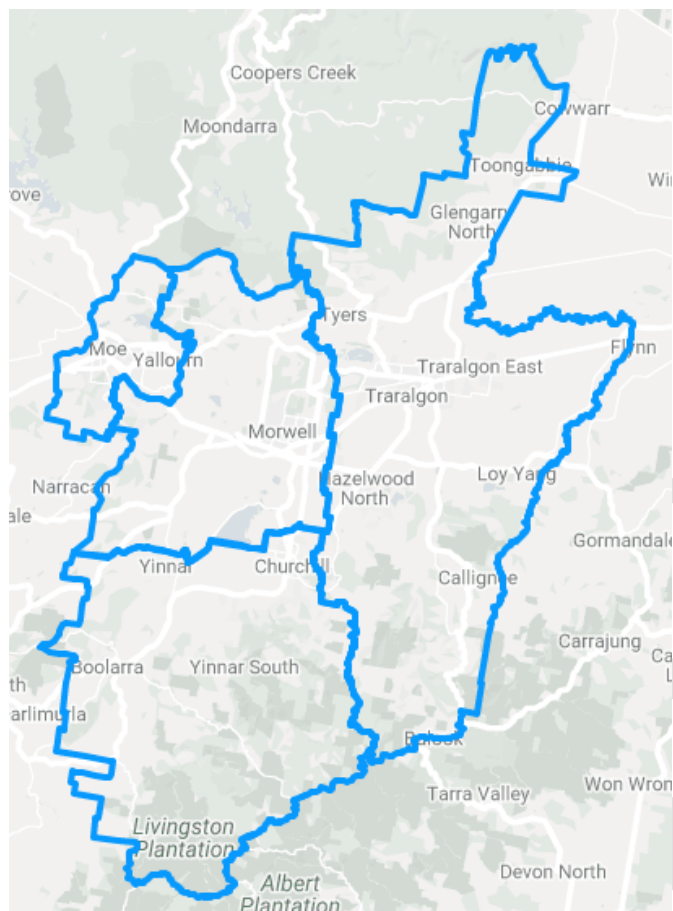
	2016	2026	2036
Family with children*	6,390	6,780	7,330
Couple-only	7,110	8,190	8,920
Lone person	6,470	7,610	8,810
Group and other	660	730	820
Total	20,630	23,310	26,080

\* Includes couples with children & single parent households





## Appendix 6 – City of Latrobe Overview



**Overview:** The City of Latrobe is located in the eastern part of the state. It covers an area of 1,426 square kilometres and in June 2018 had a population of 75,211. It is primarily urban with the vast majority of its population living within the four major urban areas of Moe, Morwell, Traralgon, and Churchill, and other significant settlements in the LGA include Boolarra, Callignee, Glengarry, Jeeralang, Newborough, Toongabbie, Tyers, Yallourn North and Yinnar.

**Current clubs:** Churchill United SC, Falcons 2000 SC, Fortuna 60 SC, Gippsland Football Club, Latrobe United Women's FC, Moe United SC, Monash Soccer Club, Morwell Pegasus SC, Newborough-Yallourn United SC, Traralgon City SC, Traralgon Olympians SC, Tyers SC

**Towns over 2,000 population:** Churchill, Moe, Morwell, Traralgon



## LGA Latrobe (C) (Vic.)

Source: Victoria In Future 2019

Contact: David Sykes (DELWP) 03 8683 0936 | david.sykes@delwp.vic.gov.au

Endowment,  
Lease, Water  
and Planning

## Key Indicators: Population, Households and Dwellings

	2016	2018*	2021	2026	2031	2036
Total Population	74,620	75,210	76,440	78,580	80,900	83,190
Total Households	32,100		33,600	35,160	36,870	38,610
Household size**	2.28		2.23	2.19	2.14	2.10
Total dwellings	34,030		35,620	37,270	39,080	40,920
Occupancy ***	94.3%		94.3%	94.3%	94.3%	94.4%

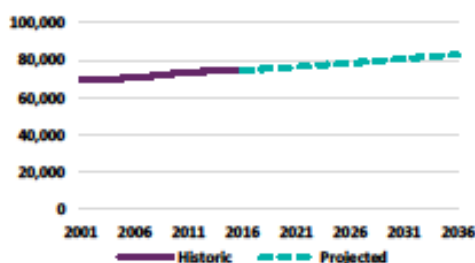
\* Population data only for 2018 \*\* Average persons/household \*\*\* Proportion of total dwellings occupied

## Population change

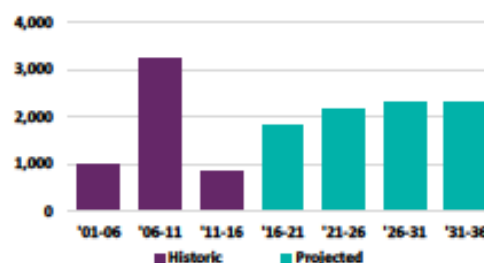
	2001-06	2006-11	2011-16	2016-21	2021-26	2026-31	2031-36
Absolute change	960	3,230	830	1,810	2,140	2,320	2,300
Annual average rate	0.3%	0.9%	0.2%	0.5%	0.6%	0.6%	0.6%
Natural Increase*	1,540	1,850	1,570	1,370	950	280	-310
Net Migration**	-580	1,380	-740	440	1,190	2,040	2,600

\* Historical based on calendar year births and deaths \*\* Implied net (change not explained by natural increase)

## Historic and projected population

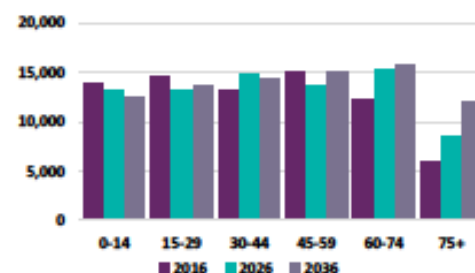


## Population change



## Population by age

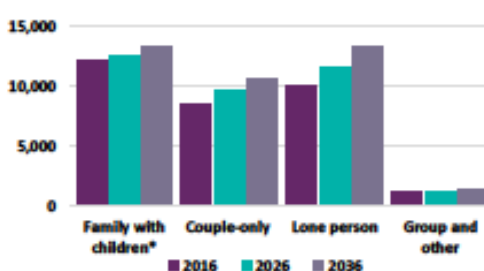
	2016	2026	2036
0-14	13,810	13,260	12,450
15-29	14,540	13,220	13,550
30-44	13,130	14,770	14,270
45-59	15,000	13,690	15,120
60-74	12,250	15,190	15,740
75+	5,890	8,460	12,060



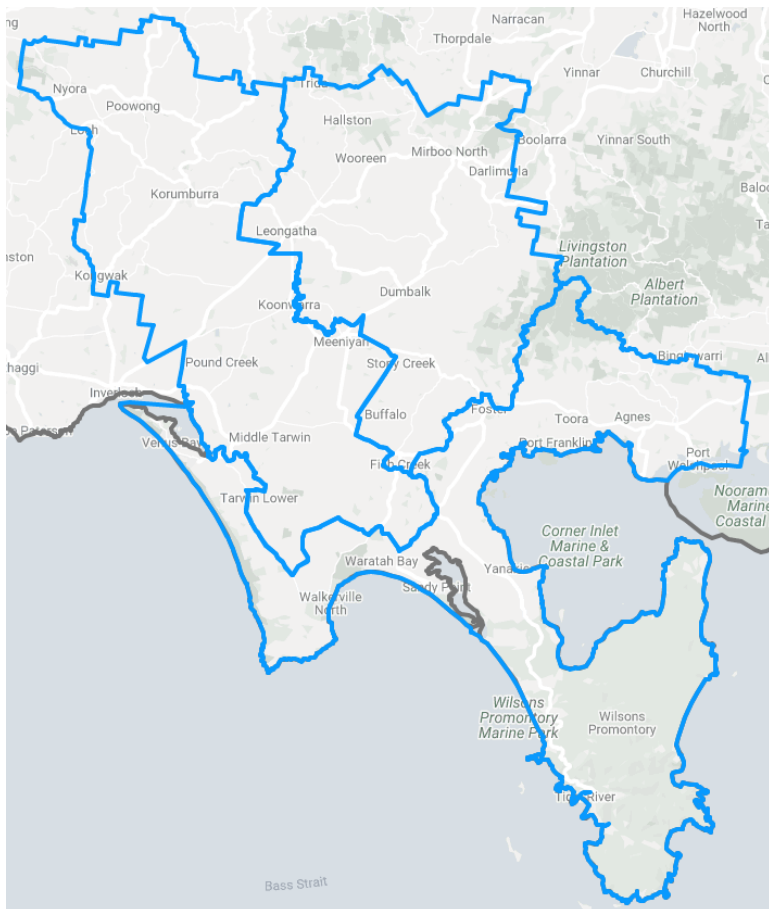
## Households by type

	2016	2026	2036
Family with children*	12,190	12,630	13,290
Couple-only	8,540	9,720	10,720
Lone person	10,170	11,610	13,310
Group and other	1,200	1,200	1,290
Total	32,100	35,160	38,610

\* Includes couples with children &amp; single parent households



## Appendix 7 – South Gippsland Shire Overview



**Overview:** The Shire of South Gippsland is located in the south-eastern part of the state. It covers an area of 3,296 square kilometres and, in June 2018, had a population of 29,576.

It includes the towns of Leongatha, Korumburra, Foster, Poowong, Mirboo North and Meeniyan.

**Current clubs:** Korumburra City SC, Leongatha Knights FC, Mirboo North United FC, Prom Coast SC

**Towns over 2,000 population:** Korumburra, Leongatha

## LGA South Gippsland (S)

Source: Victoria In Future 2019

Contact: David Sykes (DELWP) 03 8683 0936 | david.sykes@delwp.vic.gov.au



### Key Indicators: Population, Households and Dwellings

	2016	2018*	2021	2026	2031	2036
Total Population	29,120	29,580	30,260	31,480	32,730	33,930
Total Households	12,550		13,190	13,900	14,670	15,420
Household size**	2.30		2.27	2.24	2.20	2.17
Total dwellings	15,850		16,650	17,510	18,430	19,330
Occupancy ***	79.2%		79.2%	79.4%	79.6%	79.8%

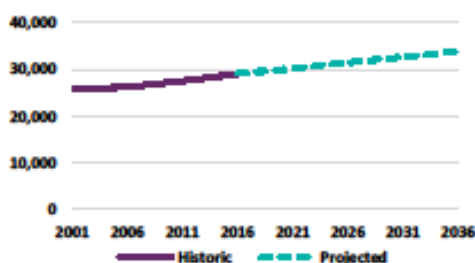
\* Population data only for 2018 \*\* Average persons/household \*\*\* Proportion of total dwellings occupied

### Population change

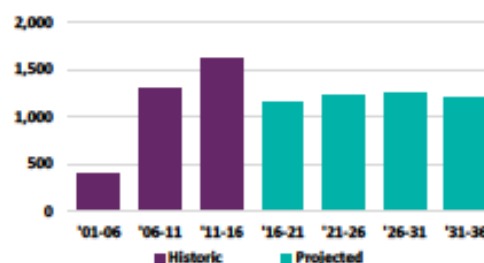
	2001-06	2006-11	2011-16	2016-21	2021-26	2026-31	2031-36
Absolute change	390	1,300	1,610	1,140	1,220	1,250	1,200
Annual average rate	0.3%	1.0%	1.1%	0.8%	0.8%	0.8%	0.7%
Natural Increase*	320	280	370	-20	-120	-300	-480
Net Migration**	70	1,030	1,240	1,160	1,340	1,550	1,680

\* Historical based on calendar year births and deaths \*\* Implied net (change not explained by natural increase)

### Historic and projected population

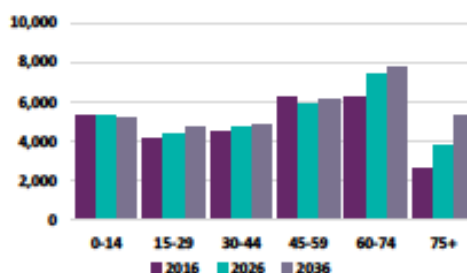


### Population change



### Population by age

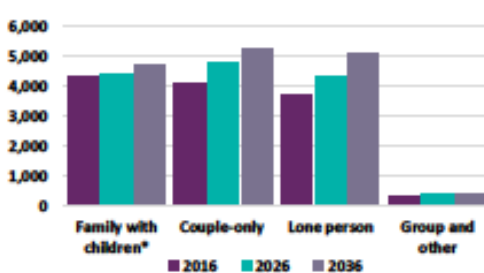
	2016	2026	2036
0-14	5,340	5,360	5,160
15-29	4,190	4,340	4,770
30-44	4,500	4,730	4,780
45-59	6,210	5,870	6,130
60-74	6,210	7,360	7,740
75+	2,670	3,820	5,350



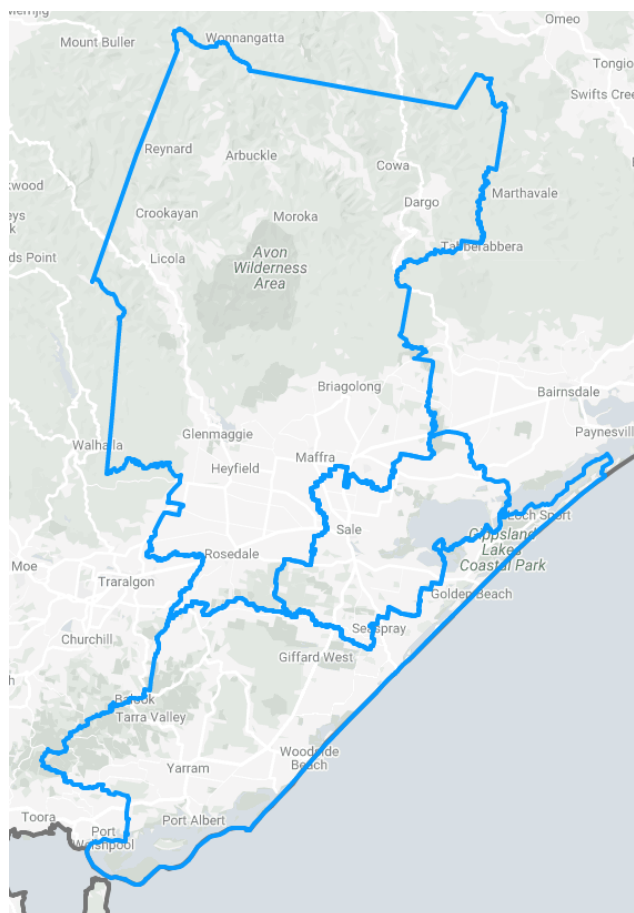
### Households by type

	2016	2026	2036
Family with children*	4,340	4,420	4,690
Couple-only	4,130	4,770	5,250
Lone person	3,750	4,360	5,090
Group and other	330	350	400
Total	12,550	13,900	15,430

\* Includes couples with children & single parent households



## Appendix 8 – Wellington Shire Overview



**Overview:** The Shire of Wellington is located in the eastern part of the state. It covers an area of 10,817 square kilometres and in June 2018 had a population of 44,019.

It includes the towns of Heyfield, Rosedale, Maffra, Sale, Stratford, Coongulla, Newry, Tinamba and Yarram.

**Current clubs:** Sale United FC

**Towns over 2,000 population:** Maffra, Sale

## LGA Wellington (S)

Source: Victoria In Future 2019

Contact: David Sykes (DELWP) 03 8683 0936 | david.sykes@delwp.vic.gov.au

Endowment,  
Lands, Water  
and Planning

## Key Indicators: Population, Households and Dwellings

	2016	2018*	2021	2026	2031	2036
Total Population	43,530	44,020	44,840	46,180	47,690	49,060
Total Households	18,370		19,260	20,190	21,240	22,240
Household size**	2.29		2.26	2.22	2.17	2.13
Total dwellings	22,130		23,190	24,320	25,590	26,790
Occupancy ***	83.0%		83.1%	83.0%	83.0%	83.0%

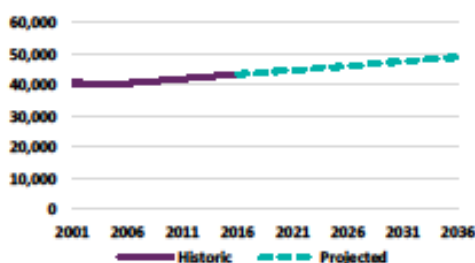
\* Population data only for 2018 \*\* Average persons/household \*\*\* Proportion of total dwellings occupied

## Population change

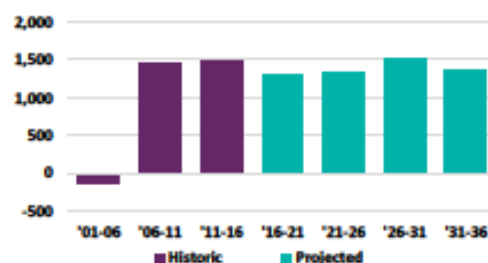
	2001-06	2006-11	2011-16	2016-21	2021-26	2026-31	2031-36
Absolute change	-130	1,440	1,470	1,310	1,340	1,310	1,370
Annual average rate	-0.1%	0.7%	0.7%	0.6%	0.6%	0.6%	0.6%
Natural Increase*	580	700	500	490	340	60	-200
Net Migration**	-710	740	960	830	1,000	1,450	1,570

\* Historical based on calendar year births and deaths \*\* Implied net (change not explained by natural increase)

## Historic and projected population

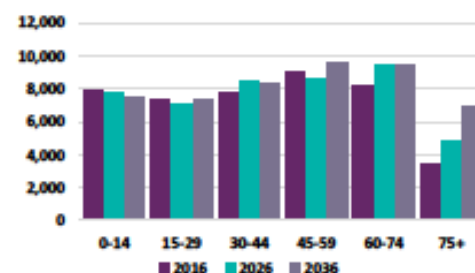


## Population change



## Population by age

	2016	2026	2036
0-14	7,930	7,800	7,460
15-29	7,290	7,010	7,340
30-44	7,740	8,320	8,310
45-59	8,980	8,560	9,540
60-74	8,130	9,400	9,490
75+	3,460	4,880	6,920



## Households by type

	2016	2026	2036
Family with children*	6,560	6,900	7,330
Couple-only	5,620	6,250	6,810
Lone person	5,550	6,390	7,400
Group and other	640	630	690
Total	18,370	20,190	22,230

\* Includes couples with children &amp; single parent households

