



# Training and Game Venues



## TRAINING VENUES

### Carina State School

Park in the Cuthred Street carpark as the Creek Rd carpark will be locked and some coaches do not have keys to let you out.

The school court is undercover but open air. If we get HEAVY rain we wash out and cannot train. If we get storms, then the court can get wet. If we are already training we will continue, taking safety into account, until parents collect players.

Only players are allowed into Carina State School during training. All parents etc. are allowed to remain in the Cuthred Street Carpark in order to follow School Covid requirements.



### Camp Hill State School

The Court is indoors. Park in the Pick Up/Drop Off zone on Ferguson Road and follow the path in.

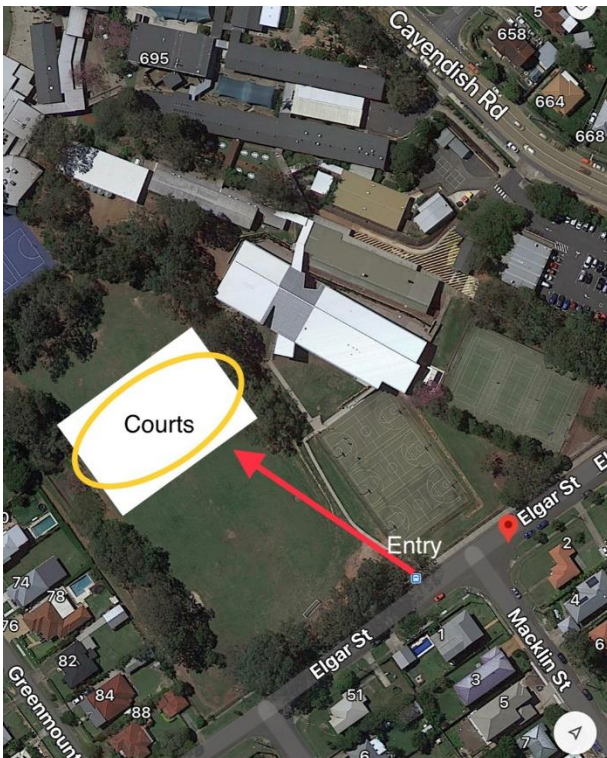
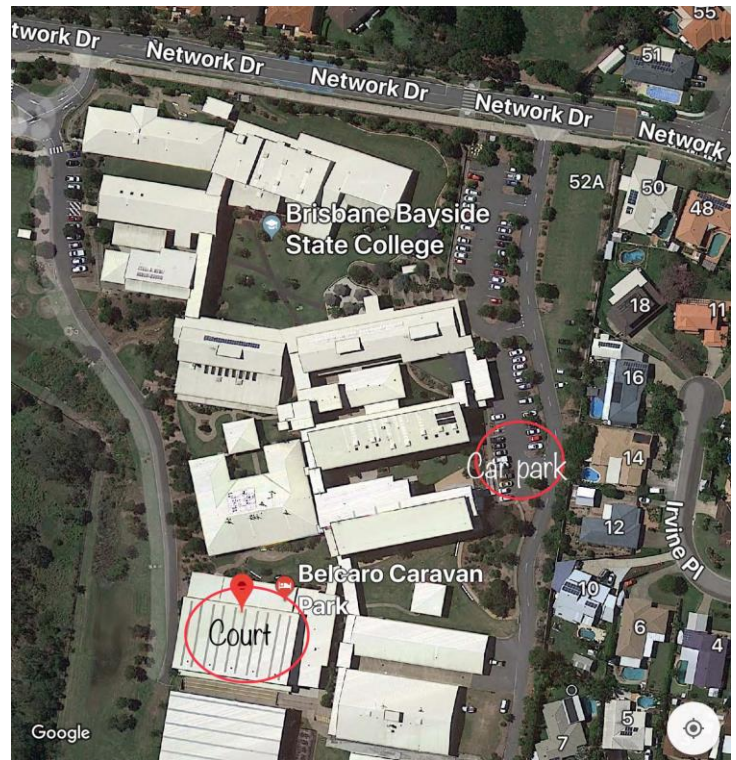
### **Brisbane Bayside College**

From Wynnum Road, turn into Network Drive. DO NOT park in the car park which is on Network Dr. or enter the 1st driveway as the gate will be locked & we have no key.

Continue to 2nd driveway & turn into the school. Park at the southern end of the carpark. DO NOT park near the janitor's area which is just past the carpark.

Walk down the path and across the grass.

Once training is over the carpark gate gets locked unless someone else is training after us so please ensure you leave immediately.



### **Cavendish Road High School**

Enter via Gate 6a on Elgar Street. Parking on the side of the road.

No food or drinks are allowed in the Stadium except water





### St Catherine's Primary School

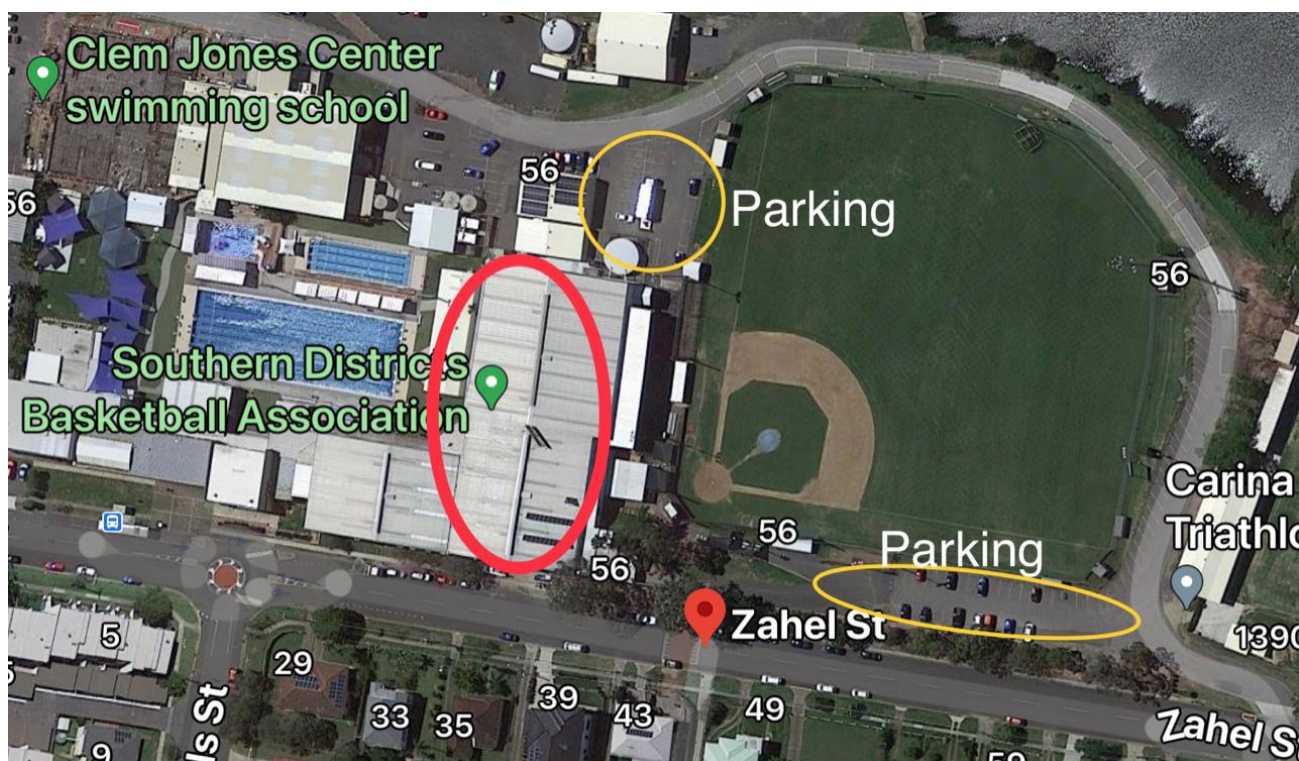
Enter from Newnham Road. Follow Road left past administration building into the staff car park. Walk down to Courts

Please do not park in carpark in front of courts as it is used for After Hours School Pickup.

## GAME VENUES

### Carina Stadium

The Southern Districts Basketball Association's Home Stadium is at Zahel Street, Carina. There is multiple car parks as well as street parking.





## Chandler

Park in P3 at the Sleeman Sports Complex. Follow the path up to the Chandler Arena. Players and coaches only follow the stairs down to the courts. Parents go up the stairs into the viewing area.



## Mansfield State High School and Mansfield State Primary School

Access is off Ham Street, Mansfield. There is also a path connecting the two courts.



## Citipointe College

Wecker Road, Mansfield.

There is parking in the school Carpark as indicated as well as street parking.

Please do not walk through the school from the School Car Park and there is no parking allowed at the St Paul's Uniting Sports Club across the road.



## Churchie

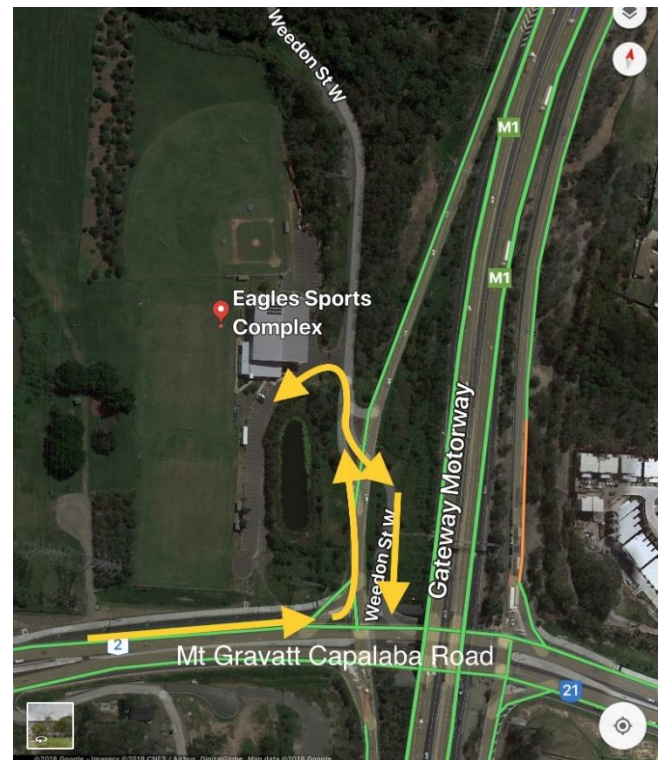
Enter via Oaklands Parade or Heath Street, East Brisbane. Follow Heath Street around onto private road and follow to Visitor Carpark at the back of the school. Court 1 & 2 are in the Sir John Pidgeon Sports Complex and Court 3 is in the Campbell Centre





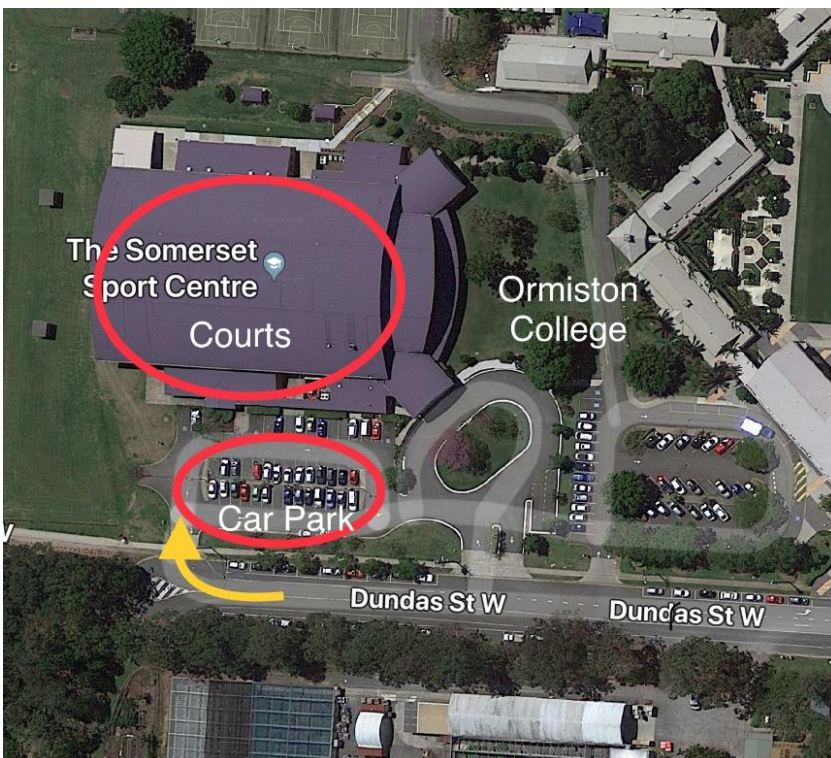
## Eagles Sports Complex

Take the Gateway exit off Mt Gravatt Capalaba Road then turn left into Weedon Street West. First left is then entry into the Car Park. To exit back onto Mt Gravatt Capalaba Road, cross the On Ramp and continue down Weedon Street West.



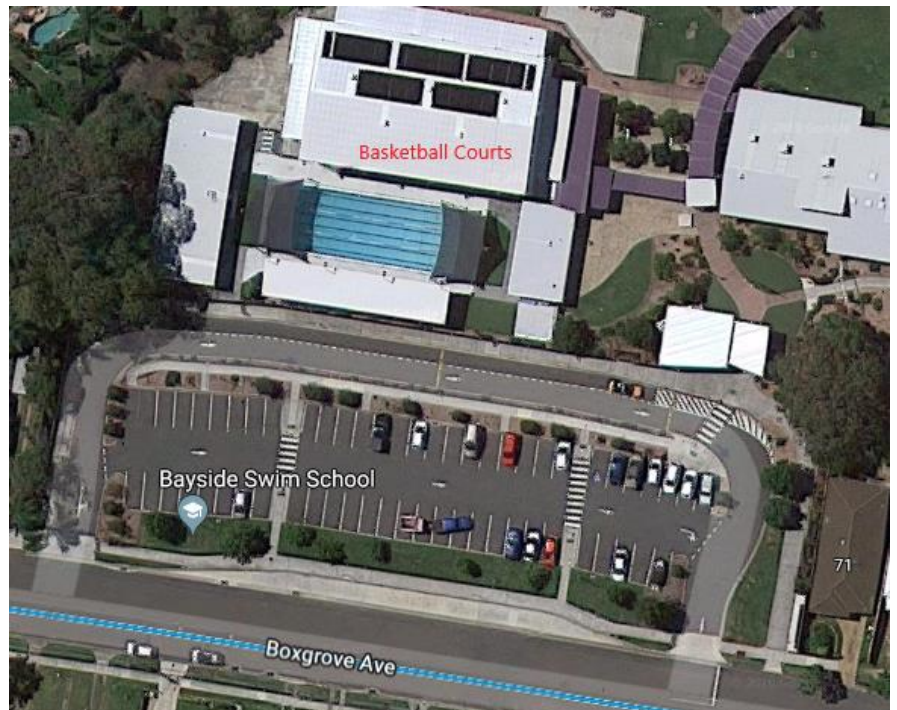
## Ormiston College

Follow Dundas St W to the end and enter the car park. Courts are directly in front of the car park.



### Wynnum State School

Park in School Car park off Boxgrove Street. Enter through main entrance and the Courts are to the left.



### Belmont State School

Best Parking is the school Car Park off Bridgnorth Street and walk through to Courts





## Sheldon College

Enter Gate 1 or 2 and best parking next to tennis courts

