

# Devils



1998/99

Annual Magazine



**LIFE MEMBERS**

- Elaine Robinson
- Sandra Ford (Gaddes)
- Shirley Pollock
- Isabel Tenger (Dcd Sept 95)
- Bill Tegner (Dcd Oct 82)
- Robyn Gaddes
- Robyn Gillinder
- Dot Pullen
- Fay Fraser
- Kaye Smith
- Chris Morris
- Vicki Gannon
- Debbie Devine
- Robyn Blackmore
- Fay Lawrence
- Kaye Marsh
- Linda Weathered
- Charmaine Simpson

**DEVILS COMMITTEE 1998/99**

**MANAGEMENT COMMITTEE**

- |                |               |
|----------------|---------------|
| PRESIDENT      | JOHN KENNEDY  |
| VICE PRESIDENT | LES BULLOCK   |
| SECRETARY      | WENDY GAUCI   |
| TREASURER      | CHRIS KENNEDY |

**COMMITTEE MEMBERS**

- |                |                   |
|----------------|-------------------|
| Asst TREASURER | MARGARET SHARPLES |
| FUND RAISING   | DIANE WEATHERED   |
|                | JULIE WAHRY       |
|                | VICKI O'BRIEN     |
| GENERAL        | DOT PULLEN        |
|                | KEVIN FAINGES     |
|                | JULIE MUNRO       |
|                | MARIE MORGAN      |
|                | MICHELLE DRABBLE  |
|                | JENNY CARTER      |
|                | JUNE LAVELL       |
| CLUB CAPTAIN   | CHRIS MORRIS      |

**CLUB SCORERS for 1998/99**

- |                  |                              |
|------------------|------------------------------|
| DOT PULLEN       | Div 1, Div 2 & U14B          |
| CHRIS KENNEDY    | Div 5, Div 6 & U16B2         |
| JAN TRUDGIAN     | U14C                         |
| CATHY O'BRIEN    | T-Ball                       |
| SUSIE GAUCI      | Div 4, Div 5 & Div 6.        |
| DIANE WEATHERED  | Div 6, Div 5, Div 2 & Div 1. |
| MELINDA HANDFORD | U12B                         |
| LORRAINE OGDEN   | U12C                         |
| LIZ ALLEN        | U16B1                        |

## PRESIDENT'S REPORT

This is my third report to the Club as President and possibly the most optimistic report yet.

During the last twelve months we have achieved many of the goals I set for the Club in my last Annual report. As you all know we have made the move to our wonderful new facilities at Shaw Sportz, and the Club has successfully merged with the Western Wildcats. These two events have made this Club much stronger. We are now fielding twelve teams, and are the fourth largest softball club in the BSA.

Our association with Kedron Wavell Services Club and Shaw Sportz is envied by several other softball clubs who have tried to covet that position. Although the members cannot see what is happening on a daily basis, great things are planned for Shaw Sportz in the future, and we are fortunate to be a member Club.

Although the merger with Western Wildcats was successful, I was a bit disappointed with the actual numbers who joined our Club. Basically this included a full senior team and several juniors. (To be fair we actually lost about a dozen of our players from last season also) But, the people who signed from Wildcats must have been the best, because they have been an energetic mob, as can be seen from the Trophy awards. I believe we are very fortunate to have them as members of this Club, and not only do I hope they all stay, but when more ex-Wildcats see what we are achieving they will also come over to this Club.

Due to a lot of hard work by the Committee in the pre-season, letterbox dropping, putting flyers up at schools and shops, (and a bit of advertising in the paper), we attracted forty-five new players to the Club.

However, this sudden growth to be a larger Club has not been without its disadvantages. We now find we have more umpiring to organize more scorers, coaches and managers needed, more canteen duty for the Club.

We now have the players and the facilities, the next step is to improve our standards whilst retaining the players we have now. In that regard I believe we have taken a step in the right direction. By now most junior parents would know that the Club is starting a "Junior Development Program" in the off-season. This program was formulated and will be maintained by the Clubs Coaching Director Les Bullock. Les will have the assistance of many of the Clubs Level One Coaches and specialist "guest" coaches. At this stage I am seeking a Government grant, or sponsorship, to run the program. If that fails it will be financed by the Club. There will not be any cost to parents.



I believe this program is vital for us to improve and nurture our junior players, who are the backbone of a Club. If you can keep the juniors coming into the Club, you usually end up with a steady, strong supply of senior players. And we have some excellent junior players in this Club, and it is vital we give them an avenue to progress to the extent of their abilities. Too often we lose junior players with potential to other Clubs. There are many reasons for this I am sure, but many times parents get talked into moving simply because the grass looks greener at the other Club. I have seen the same happening this season, especially with some of the under 14's and 16's. Some of the worst offenders have been ex-Devils people.

But in the future that won't be the case. The grass will be greenest right here. But the program will take time to achieve results, at least another season or two. And from what I have seen of our Tballers and under 12's, they will be world-beaters by that time. I would urge all parents with junior players who are interested to sign up with the Development program. Already we have had a terrific response, with at least 45 of the 75 juniors signed for the program.

For the seniors, we are thinking of improving their training as well. The Club is attempting to secure a "Club Trainer". More emphasis will be placed on skills and mobility, and each team will have a training format in place by the 99/2000 season. The juniors will also be following a similar format, but will be altered for the younger teams.

In time, the improvement in training and techniques will benefit all players. We must attempt to field the A level sides to challenge our talented players, whilst maintaining teams for the social players, who make up the majority of most clubs teams.

To supplement training next season I am already preparing grant applications for additional training equipment, coaching aids and replacements for what has been lost or damaged this season. I am assured the batting nets behind the Clubhouse will have lights next season so we will be attempting to obtain another pitching machine. (We didn't get one we put a grant in for last season as we were awarded only \$7500 of the \$10000 we asked for)

I would like to take this opportunity to thank all the Committee members, as well as coaches, scorers, and team managers. As all of you are parents or players like myself, I appreciate the time you have given. There has been a lot more work required this season, not simply because of our increase in size, but because of our association with Kedron Wavell. (We are required to sell raffle tickets at KWSC twice a month to fund raise for Shaw Sportz so far this has only been done by the committee)

There has been some notable worker for the Club this season, and I would like to mention them here, notably Chris Morris, Club Captain; Wendy Gauci, Secretary; Les Bullock V/Pres. and Coach; Kevin Fainges Coach and committee member, Diane Weathered, committee member, and Dot Pullen, Life member and scorer.

I would especially like to thank my wife, Christine and my daughters Alissa and Rachelle for their contribution to the Club.

To list what all of these people have done for you, or your daughters would take more space than I have here. And that is whom they are doing it for, all you people in the Club. They are not paid, and they gain no benefit from it. They do it every season because this is their Club too.

Every one of them deserves thanks, because without all of these people this club would not function.

Whilst I am on the subject, everyone would have received notice of the pending AGM, keep it, remember the date, and come to the Annual general Meeting. Get involved and have a go at being on the committee, if not for yourself but for your daughter. Remember that it is your club and theirs.

See you all next season

John Kennedy



## COACHING REPORT

As Coaching Director for the Club during 98/99 season I would like to congratulate all the coaching staff for a job well done, its not easy to find time to do the coaching role but looking back over the season and to see the quality of the players which the Club had at the end of the season proves what a great job the coaches did throughout the season.

The Club as a whole had a very successful year with three teams making the semi finals. This was a great effort on their behalf, although we did not collect a grand final we have the talent to hopefully improve on it next year.

I have enjoyed my role this year I had a chance to look at most of our players and the talent throughout the club ensures we are going to a force in the competition for some years to come, and will be able to hold our own against the stronger clubs.

We had a number of new players this year and the effort put in by them was great and by the end of the year the softball being played by these members proved they were able to play above their own grade.

To the rest of the club members in the senior ranks thank you for the effort put in both at training and during the games and I hope you will continue next season.

To our junior section we have a lot of good young ones coming through and this will give the club a strong senior section in years to come. With this in mind the club will be holding a junior development camp in the off season to develop the skills already learnt, and if this camp is a success and if I am still in the position next year I hope to extend it to the senior section of the club.

To do such camps we are looking for a sponsor so if anybody knows any person who wishes to come on board as our sponsor for the camps please let me know, or the club know.

To all the coaches once again thank you for your time and effort, and to all the parents and spectators who came to watch the teams play thank you for your support, and to all the club members I hope you enjoyed yourselves this year and I am hoping to see all of you back next year either as players or social members.

As a club we gained a lot of respect from the association and for this I thank you all and I am sure we have the right club attitude to make this club one of the strongest in the association again with a bit of hard work.

So thank you for your support and I will see you again next season.

Les Bullock

## COACHES 1998/99

<u>COACH</u>	<u>Asst COACH</u>	<u>TEAM</u>
MARIE MORGAN	ALISSA KENNEDY/SUE WILSON	TBALL
SUSI GAUCI	JASMINE DONAS	U12B
ANGELA MEIRS	MELISSA MCELROY	U12C
JODIE LAVELL		U14C(FINALISTS)
MICHELLE DRABBLE		U14B
KEVIN FAINGES	LISA WAHRY	""
SUSI GAUCI		U16B2
LES BULLOCK		U16B1(FINALISTS)
WAYNE NICHOLSON		DIV 6
JOHN KENNEDY		DIV 5
LINDA WEATHERED		DIV 4(FINALISTS)
CHRIS MORRIS		DIV 2
KEVIN FAINGES		DIV 1



## T-BALL REPORT

**COACH Marie Morgan**

We had six new players join our T-Ball team this season. Although hesitant at first, they started to shine, showing their enthusiasm and dedication to the game and their team mates.

It has been a great inspiration to watch the older players get behind the newer players and give them encouragement both on and off the diamond. I would have to say this spirit has moulded them into a great team.

During the season each player showed her potential for the game. Even though there were games where they struggled at the start, their boundless enthusiasm and their willingness to never say die until the bitter end has inspired not only myself, but their parents as well.

Alison Stewart-Salmon, Carlene O'Brien, Casey Topping, Hayley Morgan, Laura Gosney and Sarah Trudgian have been with the T-Ball side for two or three seasons. Next season these girls will move up to under 12's softball. I feel they are well and truly ready to move on. Keeping the same spirit they displayed during their time in T-Ball will enable them to go a very long way with the game.

Knowing that the younger girls would become the big girls next season, I played them in the infield positions, which were prominently occupied by the more experienced players over the season. Watching them tackle these positions, it is obvious we will have a great T-Ball team next season.

The team and I would like to thank the following people for their help and support during the season.

Alissa Kennedy	Asst. Coach.
Cathy O'Brien	Manageress & Scorer.
Sue Wilson	Scorer & Asst. Coach
Sue Quax	Scorer
Lloyd Salmon	Team Organizer.
Allan Trudgian	Team Organizer.
Gavin Topping	Team Organizer

Seasons Statistics: Won - 14 games , Drew - 1 game, Lost - 4 games.



**T-Ball**  
 Back row (l-r): Carlene O'Brien, Nicole Fletcher, Sarah Trudgian, Laura Gosney, Alison Stewart-Salmon, Hayley Morgan, Melissa Ogden.  
 Front row: Veronica Vivian, Julia Gosney, Kelsey Wilson, Casey Topping, Samantha Quox, Amanda Trudgian.  
 (Photo ~ Sue & Wies Fajzullin)  
 Rear: Alissa Kennedy (Asst. Coach) & Marie Morgan (Coach)



## UNDER 12 C

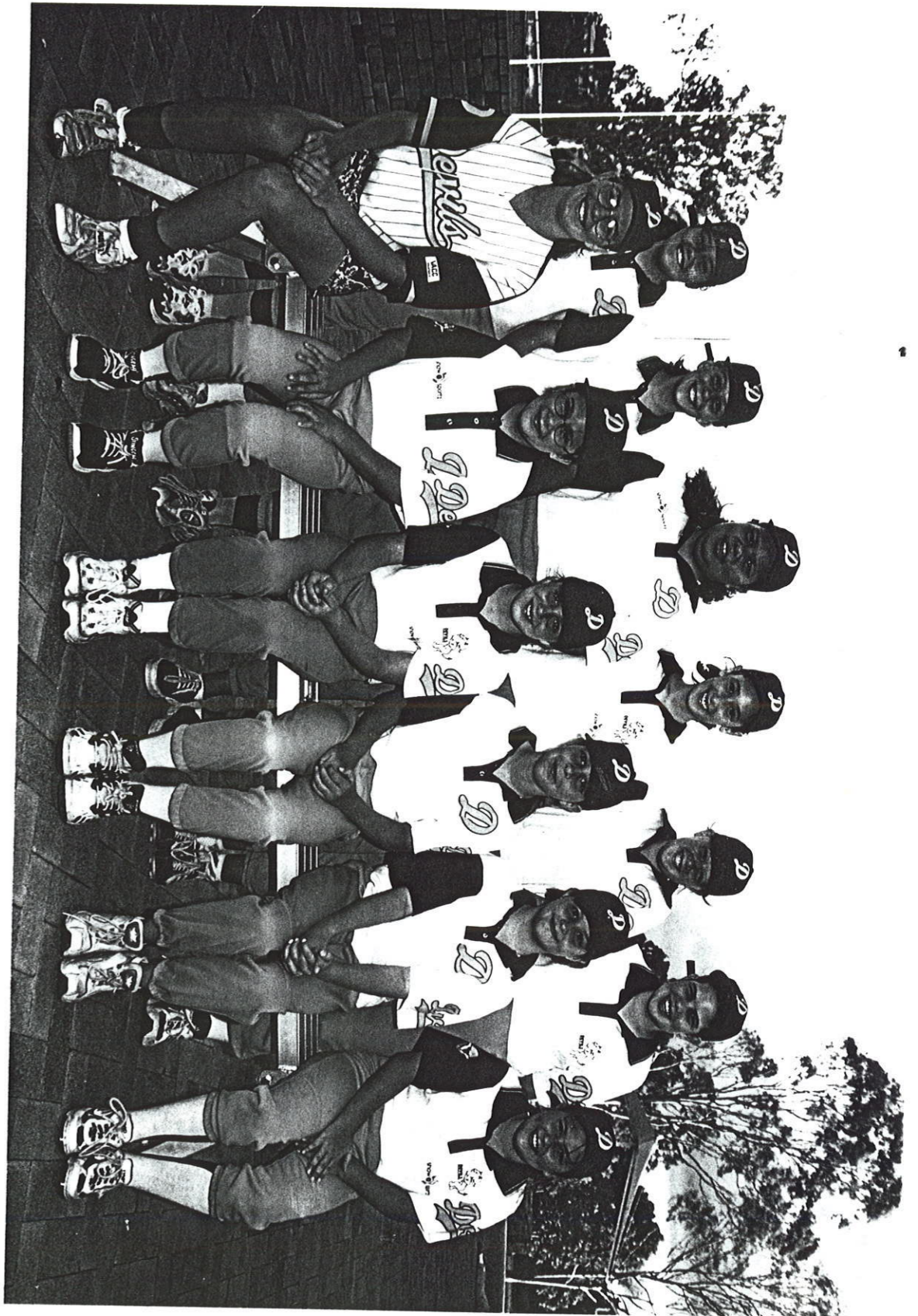
**COACH: ANGIE MIERS**

**ASS COACH: MELISSA MCELROY**

On behalf of Melissa and myself I would like to thank all the girls for a fantastic season. The majority of the girls had just come up from T-Ball so it was great to watch them develop skills along the way. Thank you to all the parents for their on going encouragement and support to the girls. A special thanks goes to Jodie Tsoumbaras for being a great manageress and to Lorraine Ogden for scoring.

This was Melissa's first year coaching and my second year coaching, but nothing prepared us for the season ahead of us. The girls were a great bunch of girls. Always showing up to training and at the games, they were always eager to try new positions. The girls were also the most enthusiastic group that I have ever had.

Finally I would like to thank the girls again for a great season, good luck in the off season and I hope to see all of you next season.



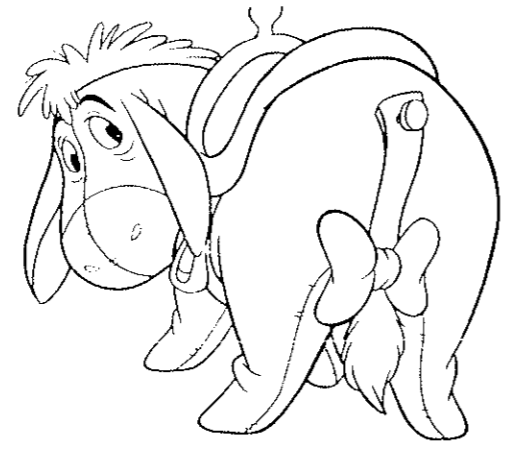
U/12C

*Back row (l-r): Amanda Ogden, Christine Bechly, Larissa Lee, Kristie Lahey, Rebecca Sparks, Sarah Kemp.  
Front row: Angie Miers (Coach), Jemimah Conners, Karen Bechly, Jami Millikin, Jessica McNee, Ashlee Tsoumbaras.  
Absent: Melissa McElroy (Coach).  
(Photo ~ Sue & Wies Fajzulin)*





U/12B  
 Back row (l-r): Kimberley Colhoun, Therese O'Connor, Hannah Ogden, Amie Rolfe, Elyse Young, Lesa Handford, Lara Scholz.  
 Front row: Susie Gauci (Coach), Karyn Weathered, Rebecca Fernando, Kerri O'Brien, Jasmine Donas.  
 Absent: Lee-Arn Colhoun (Mgr.) & Melinda Handford (Scorer).  
 Photo ~ Sue & Miss Fitzsimon



DEVILS UNDER 12 B 1998/1999

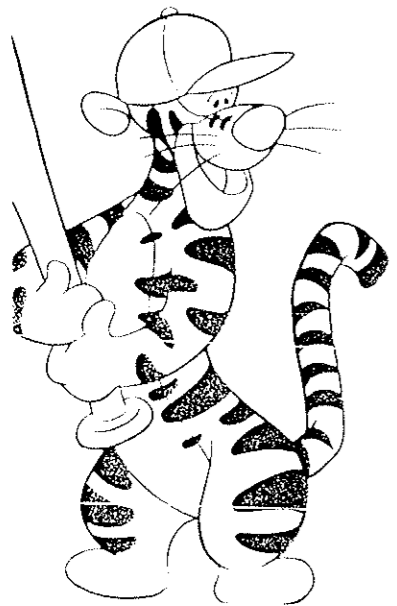
Firstly I would like to take the time to thank everyone involved with this team. My assistant Jasmine Donas, Scorer Melinda Handford, Manageress Lee-ann Colhoun, the parents and spectators and last but not least a very talented and vocal Under 12 Team.

During the season I was told by many of the other Under 12 Coach's that these girls should not have been in this grade, rather the next one up 12a's! This is a great complement to the girls, as the coaches commented on all the talent in which was in this team and most importantly on how they played as a team. So congratulations girls.

A very BIG THANK-YOU to all the Under 12's for a fantastic season, not only was there always 100% at training but also in games, which is great to see such good team work in this grade. Also to the T-Ball and Under 12c who filled in for us Thank-you and to the 12b for playing in the Under 14 teams.

I have had yet again a very enjoyable, but at some stages stressful, season. I am looking forward to next year, as I will be taking the same team into the under 14 competition, that's if they will have me as a coach again. (for some of the girls this will be the third year I will have coached them!)

Once again Thank-You to everyone involved and see you next season.





### U14C Team report (Finalists)

When dad came home from one of the earlier training sessions of the year he told me I was coaching the U14c side by myself. At first I was very excited, and then the thought of coaching ten, 12 & 13-year-old girls was rather daunting. But now, at the end of the season, I wouldn't have changed a thing

We started the season with a variety of different talents within the team, girls who hadn't played before, girls who had played just for school, and some girls who had played some club softball, therefore as a team we had to start from scratch.

In our first couple of games, individual talent and some knowledge of the game shone through.

As the weeks passed, we were developing more and more into a team, getting to know each other and the abilities of our teammates. I said to the girls at the beginning of the season we were a team and we would do everything as a team. The support and loyalty the girls gave to each other grew stronger as the weeks went by. They trained hard every week, and put 100% into their games. Their skills improved immensely; combined with their continuous enthusiasm we had a winning combination.

We took many opposing teams by surprise the second time around, finishing the competition in third place, which meant we had a chance at the final.

We turned up on the day with plenty of enthusiasm, red frogs and supporters with their black and gold pompoms. The whole team played a terrific game of softball. Their fielding was exceptional. At the end of three innings both teams had fielded and batted evenly.

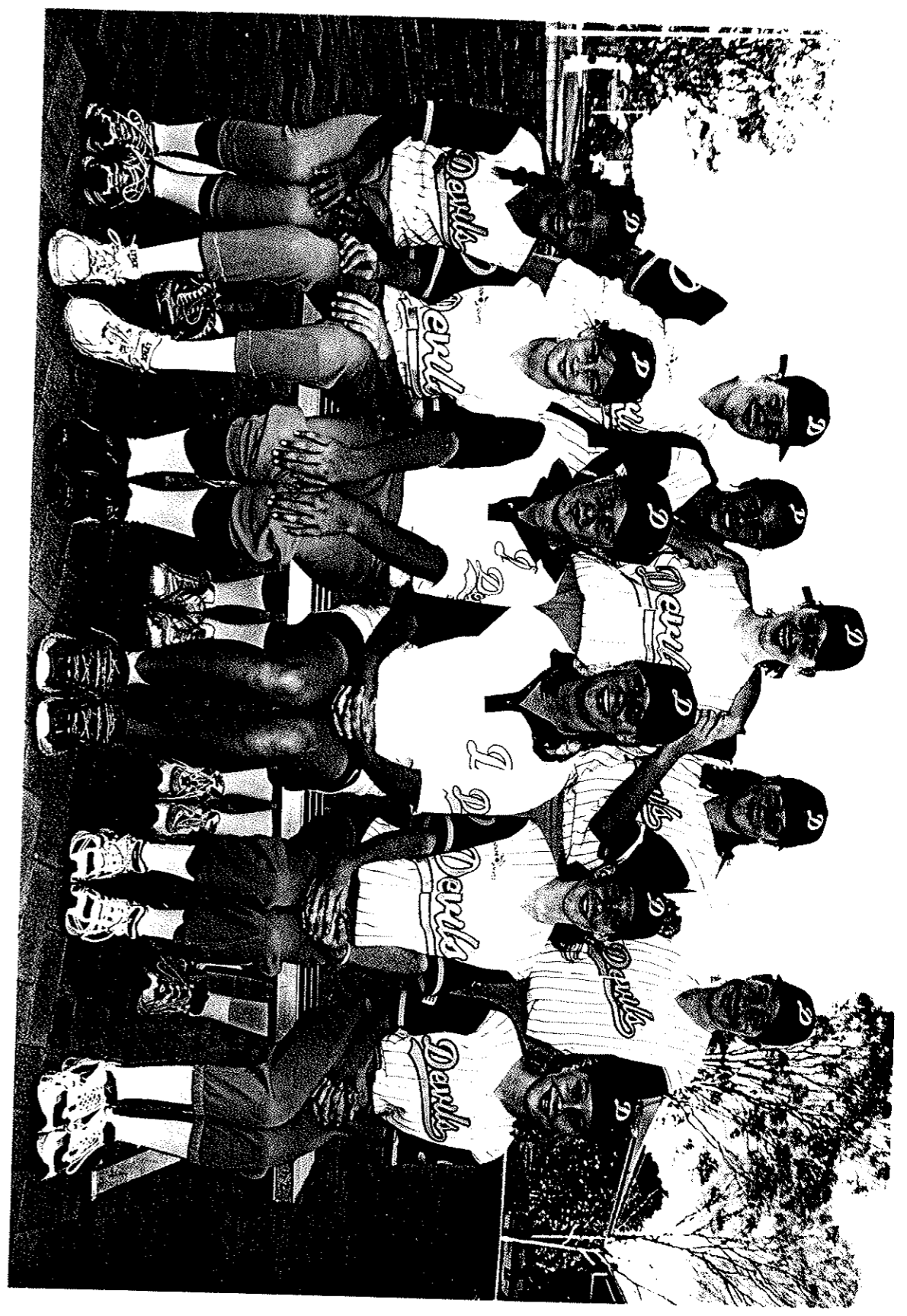
With only five minutes remaining in the game the umpire called the other team to bat, we were all rather shocked by his call but felt very excited knowing that the runs scored would not count. It would revert back to the completed innings and we would be in the grand final. But unknown to us at the time, and to everyone's amazement, the umpire intended to complete the started innings. By that time it was too late. Panthers batted well and crept in front.

But our girls didn't give up without a fight. They remained in high spirits and encouraged and cheered louder than ever. Those girls made me and every person on the sideline exceptionally proud of them. They played their very best and even after our unfortunate loss they held their heads high, shook hands and made me cry.

The admiration of those girls was amazing and I hope I'm lucky enough to be coach of them next season.

Thanks to all  
Jodie Lavell

- |                        |               |
|------------------------|---------------|
| Team Trophies          |               |
| Most Valuable Player   | Melissa Boyes |
| Most Consistent Player | Chloe Harding |
| Most Improved Player   | Emma McNee    |



U14C  
From row (l-r): Erin Hanlon, Erica Trudgean, Erin Carnwell, Emma McNee, Kate Lowrie, Chloe Harding, Cleo Dady, Melissa Boyes, Jodie Lavell (Coach), Angela Ritchie, Shannon Lowrie





U/14B  
Back row (l-r): Nicole Black, Kristen Bulllock, Celeste Norman, Krystle Kiss, Amelia Devereaux.  
Front row: Kevin Fainges (Coach), Brook Steel, Patrice Lowry, Meagan Topping, Lisa Wahny (Coach)

(Photo ~ Sue & Wies Fajzulin)

UNDER 14B

Well what can I say about this happy go lucky young team. I took over the helm a few games before the Christmas break and had instant success winning the first two games.

These girls play with determination and heart and it was a tremendous pleasure to see their smiling faces every Saturday.

I believe that if the girls knuckle down at training they have a great deal to offer the sport of softball and our club.

A big thank you to the Kiss family for looking after our kit and to Dot for being there to score for the team.

**May your feet be swift, your bats be mighty and your fielding be neat.**

Thanks girls,  
Kevin.....

- |                              |               |
|------------------------------|---------------|
| <b>MOST VALUABLE PLAYER:</b> | Brooke STEELE |
| <b>MOST CONSISTENT:</b>      | Krystle KISS  |
| <b>MOST IMPROVED:</b>        | Megan TOPPING |



DEVILS UNDER 16B2 1998/1999

Firstly I would like to take the time to thank everyone involved with this team. Scorer Chris Kennedy, Manageress Corinne Atkinson, the parents and spectators and last but not least a very hormonal Under 16 Team.

This team has a lot of potential and towards the end of the season they gave it all they had. You see the competition that the girls were playing in was extremely challenging! In my opinion most of the 16B2 teams should have been in 16B1, but we gave them a run for their money at the end of the season and even shocked some people along the way.

I must not forget to say Thank-You to the Under 14 teams for filling in for us, without you and your passion for Softball we would have had to forfeit some games.

A big THANK-YOU to all the Under 16B2 players, it was a tough season and everyone put in 100%. I enjoyed the season, I don't know so much about the gray hairs and heart attacks, but the girls, sorry Young Ladies were a pleasure to coach, I wish them all the best in their Softball and I'll see you around the ball park next season.

Thanks Susie Gauci

Best and Fairest  
Most Improved  
The Duck Award

VANESSA WOOD  
ELIZABETH CROSSAN  
JILLIAN FLESSER



U/16 B2

*Back row (l-r): Jillian Flessler, Vanessa Wood, Stacey MacMillan, Tegan McBride, Elizabeth Crossan.  
Front row: Deanne Lane, Lisa Cruise, Rachelle Kennedy, Christina Atkinson, Susie Gauci (Coach)  
Absent: Chris Kennedy (Scorer) & Corinne Atkinson (Mgr.).  
(Photo - Sue & Wives Fajzulin)*



UNDER 16 B1 TEAM REPORT

This team had a very good year, we ended up a tie for fourth place at the end of fixtures, but after a count back we finished outright fourth, we played Panthers in the knockout semi. The girls put in a great effort on the day but Panthers ran out winners, I believe our girls were also winners on the day because they proved they have the ability to match the top teams and play top class softball, and I hope in future they have the opportunity to prove it once again.

At the start of the season we thought we were put in the wrong division but the girls proved by the end of the first round we could hold our own in this grade and had a good chance of making the final.

We had our ups and downs throughout the year but as coach the effort put in by the girls made me proud of them, they trained hard throughout the season, this effort enabled them to reach the finals.

We had a number of fill in players through the season and my thanks go to these players for their willingness to play for us, this shows the club spirit and dedication.

Would like to thank Mrs Lavell for doing our manageress job through the season and also Vicki O'Brien who Mrs Lavell took over from, and to Mrs Allen for scoring. We had other scorers at times during the season to all these people thank you.

A special thanks go to the parents for their support throughout the year, it was greatly appreciated, it gave the girls inspiration throughout the year. My thanks also go to Mr Tobler and Mr Miles for the assistance throughout the year.

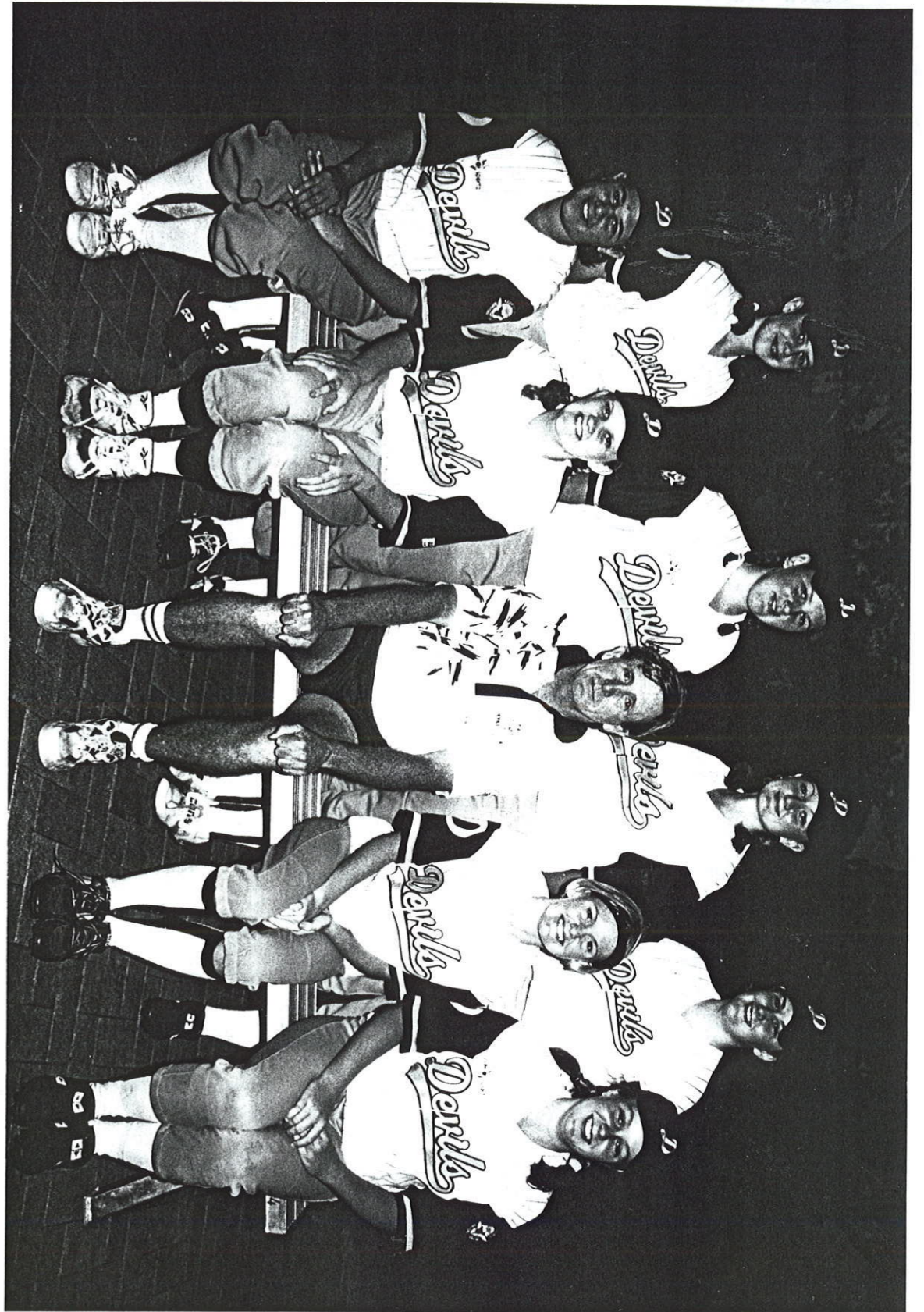
My thanks once again must go to the girls themselves for all the effort they put in throughout the year the ability shown by them all proves with a lot of hard work they have the ability to go a long way in softball. The whole team was a credit to the club. As I most likely will not be with them next year I wish them all the best and hope to see them back next year for another successful year.

Les Bullock

Most Valuable Player Rebecca Miles

Most Consistent Player Amy Scales

Most Improved Player Mandy O'Donnell



Front row: Jasmine Donas, Mandy O'Donnell, Leslie Bullock (Coach), Rebecca Miles, Hayley Lavell.

U/16 B1

Back row (l-r): Lisa Allen, Melissa Tobler, Samantha Wallace, Amy Scales.

Photo - Sue & Wives Fajzulin



## Division 6 Team Report

Coach Wayne Nicholson.

It has certainly been a difficult season for all, being my first year as a Coach. But, that aside the season would have been much easier on all of us, if we had shown more commitment throughout the season.

We showed much more promise in the latter part of the season by achieving better results, and if that part of the year is anything to go by, then we will certainly be placed in a lot better position that this season.

On behalf of the team and myself, I would like to thank everybody that has been involved with the side throughout the season, Julie Wahry the Team manager, the scorers and the players from the under 16 and 14 sides that filled in for us.

Team trophies:

Most Valuable Player  
Most Consistent Player  
Most Improved Player

Kathryn Britton  
Heather Kemp  
Kelly Swift



Back row (l-r): Wayne Nicholson (Coach), Kathryn Brittain, Julie Wahry (Mgr.), Kelly Swift, Heather Kemp.  
Front row: Tanya Giudice, Sandra Vivian, Julie Cruise, Winnie Smith.

Div 6  
Photo ~ Sue & Wres Polzullini



**Division Five**

<b><u>Coach</u></b>	<b>John Kennedy</b>	<b><u>Manager</u></b>	<b>Margaret Wood</b>
<b><u>Scorers</u></b>	<b>Susi Gauci</b>	<b>Chris Kennedy</b>	<b>Diane Weathered</b>

Well, here it is, the end of the season! I think I will miss the Saturday afternoons with the Div Five ladies. We had a few wins, and quite a few laughs along the way. The ladies played their best for most of the games and that's all a coach could ask.

We had a core of players from the division five of last year, Robyn, Margaret, Wendy and Yvonne, and scored some talented new members of the team, Lyndl, Tanya, Corinne, Kim, Alissa and Rhiannon.

Thanks for the season ladies, for your patience and dedication to the team.

Thanks also to Chris Morris, Les Bullock, Kevin Fainges and Susi Gauci, who helped with the team, and took them on the weekends I had to work. Thanks also for not embarrassing me by winning too many games on those weekends!

Thanks also to Susi, Chris and Diane for scoring our games and also to Margaret the team manager. Margaret already had a hectic Saturday as team catcher, but also collected monies and kept the books.

Finally, I would like to thank the Div 6 and under 16 players would filled in for us, usually after playing a full game in their own side. During the course of the season we were short due to injuries or family commitments, and there was no shortage of willing players from these sides.

All the best ladies, and I will try and catch one of your games next season.

**TEAM TROPHIES**

Most Improved	Yvonne Whitehead
Most Consistent	Lyndl Graham
Team Player	Robyn Blackmore

It has been very difficult to try and select , just three from the team to receive awards, as most of the ladies were worthy of something. Our batting stats show that we have six or seven steady batters, and in fielding , most were as good as each other on the day.

John KENNEDY



Back row (l-r): John Kennedy (Coach), Lyndl Graham, Margaret Wood, Alissa Kennedy, Rhiannon Hodges, Tanya Lee Ditman.  
 Front row: Kim Nicholson, Wendy Gauci, Corinne Atkinson, Yvonne Whitehead, Robyn Blackmore.

Div 5  
 (Photo ~ Sue & Wres Fajzullin)



DIVISION 4

Coming from Division 6 (C2) to Division 4 (B3) has been a long hard battle for these ladies at times, but, they have done themselves proud to finish in the top four of their grade.

Started our 1998-199 season off not as well as would of liked, losing the first three games. A win the following week, helped lift our spirits, but not so the next week - yes we lost again.

We fought back to win the next five games, quiet convincingly, excellent glove work and strong batting helped us a lot. Our team was really coming together.

Lost the next two games, but able to finish the season with a win under our belts.

This season has not gone with its list of injuries, I have never seen so many in all the time I have been involved with softball.

Gail first game broken ribs, Margaret broken nose and fractured cheek bone followed a few weeks later. I think these two ladies should get an award for being the most stubborn people I know. "We have our gear here and we are ready to go on" - "yes when we see the clearance from the Doctor"

Happy to say both ladies are both back playing, boy was that the longest six weeks.

Our injury list didn't stop theres, knees, hops, ankles, shoulders, even the ladies who filed in for us were not started from this list.

Hopefully we can finish this season without any more injuries.

The team would like to thank all the players who have filled in for us this season - Sam, Tanya-Lee, Tanya, Robyn, Margaret, Kim and anyone I have missed.

Special thanks to all our Scorers - Susie, Chris, Dot, Wendy, Charmaine, Margaret and Diane. I know that this is not an easy job each week, especially when Paul and I are always yelling "Where does this one go"

Thanks to all the Committee members, Coaches, Players and all our friends and family for their help and support throughout this season.

Paul and I would like to thank the ladies of Div 4 for their support, commitment, loyalty and friendship once again this year. For a team who got together just for fun you have proven yourselves once again. We both wish you all the best for the coming 1999-2000.

Linda Weathered & Paul Hoppe

TEAM PLAYER	BEST BATTER	BEST FIELDER
Diane Weathered	Sue Larsen	Leonie Bowles Lynne Goodwin



Div 4

Back row (l-r): Lynne Goodwin, Margaret Sharples, Gail Hoppe, Vicki O'Brien, Diane Weathered, Sue Larsen.  
 Front row: Michelle Broekmyse, Linda Weathered (Coach), Leonie Bowles.  
 Absent: Kelli Nagel, Paul Hoppe (Asst. Coach), Coral Halford, Faye Lawrence, Sarah Vivian.  
 (Photo - Sue & Wives Family)





Div 2

*Back row (l-r): Kaye Marsh, Freda Hegarty, Robyn McBride, Beth Delbridge, Lisa Wahny.  
Front row: Dot Pullen (Scorer), Julie Muro, Marie Morgan, Chris Morris (Coach).  
Absent: Michele Drabble, Melissa McElroy, Shreen Emry.*

## Division 2 Team Report

**Coach Chris Morris**

Well, the merry-go-round has stopped for another season! Sometimes, we got our moneys worth, and other times we simply fell off!

But not to worry, the team tried their best and I would sincerely like to thank the ladies for their effort. There was a lot of team spirit, throughout the season, and the ladies never stopped trying no matter how strong the opposition.

The Division 2 team and I would like to thank the following people: Dot Pullen for scoring, Julie Munro our manageress, and the people who filled in for us throughout the season from divisions 4, 5 and 6, and anybody else I may have overlooked.

I hope to see everybody back for next season.  
Thanks to one and all,

Chris Morris



DIVISION ONE

With ten girls on the books at sign-on it didn't take long before two pulled the pin, so shut the gate I'll stick with eight.

The team and my personal nicknames:

**HOLLY MOLINEX** (Third and Catcher) "ICE CREAM"

Holly mostly played third for us this season and did a mighty fine job. I believe that if she can control her scooping motion in the field she will be a very strong all-round player. Thanks Holly

**JODIE LAVELL** (1st and short-stop) "NOODLE"

Jodie started the season with a bat the size of a tree trunk, which I think she left in the yard and her Dad used it for bar-b-que wood, but Jodie found a new tree by the end of the season. I call her noodle because she thinks too hard about what she wants to do instead of just doing it. Onya Buddy.

**BELINDA MARNER** (Left field & Team Captain) "CRAZY BELLA"

Waddya reckon my right hand man? Umm woman!!!! Bella is a person who brings comedy and competitiveness into one word, SOFTBALL. Belinda has done a fabulous job as team captain this year, she has the ability to get the girls attention with comedy and turn it into motivation. Thanks Bella for keeping the smiles on our dials.

**MELISSA BAIN** (Shortstop) "TIKKI"

Melissa played her first season with us this year but unfortunately went back to the land of the long white cloud before the last game. Melissa has all the talent a coach loves to see. I think she was the best short stop I have seen and has a lot to offer softball. Good Luck Melissa

**ZOE-ANNE NEIL** (Centerfield) "STRETCH"

Didn't see much of Zoe-Anne this season due to other commitments. Zoe-Anne has ability and a positive attitude to the game and teammates. Next season Zoe.

**JILLIAN CARTER** (Catcher) "SMILEY"

For a girl I couldn't get boo out of last season Jill has come out of her shell in the most perfect way. Jill reads the game like god reads the bible and has a very good glove and arm and can hit a ball further than most of my male counterparts. Doesn't mind a quiet drink either I hear. The pleasure was mine Jilly.

**ANGELA MEIRS** (Second base) "MACCA"

Petite little Angie, what can I say if she wasn't standing in the field she was on the ground or injured at work. Great player with a lot of potential to go a long way. easy going light hearted girl and a privilege to see her smiling face every week. Thanks Angie. Do I get fries with that?

**KAREN BRUYN** (Pitcher) "SHOOTER"

Karen's first season with us saw her in the drivers' seat on the mound. Karen did a fantastic job for us and spat the dummy once, which I think is great for pitching over 1000 balls this season, the umpire didn't help much either, hey shooter. Stay loaded till next season.

**DOT PULLEN** (Scorer) "YOUNG DOT"

It is with extreme pleasure that I thank Dot for her support this season as the scorer. Like the Lone ranger and Tonto, I've got Dot and Johnny, two people I hold in the highest regard and thank them both for their assistance and company. Thank you both Dodgey.

**FILL IN PLAYERS - SPECTATORS.**

I would like to thank all the fill in players for this season because without them the team could not take the field and a Saturday is not a Saturday without the spectators and I'm very happy they are on our side.

**A VERY BIG THANKS TO APRIL-JUNE-SEPTEMBER LAVELL MY TEAM MANAGER A JOB WELL DONE AND THANK YOU.**

**BE DARING - BE A DEVIL  
DODGEY**

**MOST VALUABLE PLAYER:** Melissa BAIN  
**MOST CONSISTENT:** Karen BRYUN  
**MOST IMPROVED:** Angela MEIRS



Back row (l-r): Holly Molinex, Jillian Carter, Zoe-Anne Neil, Belinda Marnier, Melissa Bain.  
Front row: Dot Pullen (Scorer), Jodie Lavell, Kevin Fainges (Coach), Angela Miers, June Lavell (Mgr.).  
Inset: Karen Bruyn  
Photo - Sue & Wives Fotzullo

Div 1



## PERPETUAL TROPHIES

### Junior Coach of the Season

Jody Lavell

U14C

When Jody took on the job of coaching the U14C side, we were not sure whether there was even going to be a second 14 team. We were struggling to get more players, as we had too many for one team, and not enough for two. Two of the stronger U12s were put up, but most people thought the team would struggle, as many of the other players were new. And we were wrong. Under Jody's coaching this team blossomed making it as far as the finals, and being very unlucky to lose on that day. And from what I have seen of the team, all have improved steadily during the season, with one player Melissa Boyes, being awarded the "Player of the Future Award."

### Senior Coach of the Season

Linda Weathered

Div 4

If any coach had her share of troubles this season, they would be hard pressed to surpass Linda. Initially being promoted from Div 6 last year to Div 4 this year, there were some reservations in the team that they could perform at this level. This did not stop Linda who intensified the training accordingly. Then, as the season progressed, the injuries began. For a while she was losing a player a week, new faces came along and then dropped out due to injury. However, Linda and the team persisted, making it to the finals, where they too were unlucky not to win.

### Junior Team of the Season

Under 12 B

Coached by Susie Gauci and Jasmine Donas, the team comprises, Kimberley Colhoun, Therese O'Connor, Hannah Ogden, Amie Rolfe, Elyse Young, Lesa Handford, Lara Scholz, Karyn Weathered, Rebecca Fernando, and Kerri O'Brien. The team manager is Lee-Ann Colhoun and the scorer is Melinda Handford. This team is representative of the Club this season, in that it comprises Devils of 97/98 Ex-Wildcats, new members to the Club, and players who left other Clubs. Susie and Jasmine have molded them into a very strong side, winning most of their games this season. Unfortunately U12's do not have finals, otherwise this is a trophy the club would have for sure in this grade.

## PERPETUAL TROPHIES

### Junior Club Girl

Kirsten Bullock

U14B

There were five nominations for this trophy from players in U12 to U16, and voting was very close. Kirsten has been an asset to the Club since she joined from Western Wildcats. She trains hard, plays hard and is always properly attired. She has always done her bit for the Club, and always a pleasure to have around. Kirsten has played many games for the U16's and seniors, and was always ready to sit on the bench at these teams if asked.

### Senior Club Girl

Diane Weathered

Division 4

Diane is a very worthy recipient of this award. A strong competitive player in her side, Club scorer for several team, committee member, Fund raising committee chair-person and raffle organizer, canteen worker almost every Wednesday night at training, selling raffle tickets for the Club at Kedron Wavell, letter box dropping, etc etc. Although only with Devils this season, she is always willing to get in and help the Club. I would like to personally thank DI for her help this season, as it made my job so much easier. She is an incredible asset to this Club.

### Player of the Future

Melissa Boyes

U14

Again, there were several strong contenders for this award, especially amongst the U14 and U12 players. However, Melissa's achievements this season were considered exceptional at her age. Melissa is only eleven, and was asked to go up to the U14, along with Chloe Harding, to bring that team up to nine players. She has been one of the better U14 players, also filling in many times for the U16's, Division 6, and Division 2 teams. She has steadily improved during the season, and will go even further when she realizes she does not have to hit a home run every time she bats.

### Player of the Season

Jillian Carter

Div One

Jillian has been with the Club for many years now, and during that time she has always been a quiet achiever. A strong, competitive player, Jillian is a determined batter, and a strong fielder. This has been reflected in her performance this year. She is always a great advertisement for this Club, always being properly attired at games or at umpiring or canteen duty.



## PERPETUAL TROPHIES

### Senior Team of the Season

### Division 2

Coached by Chris Morris, the team comprises Kaye Marsh, Freda Hegarty, Robyn McBride, Beth Delbridge, Lisa Wahry, Michele Drabble, Melissa McElroy, Julie Munro, Marie Morgan and Shireen Emery. Dot Pullen is the team scorer. This team is also a mixture of the "old" and "new", being made up of Devils players, ex-Wildcats, and several new players. Although it took time for the combinations to work, they performed well considering the strength of the competition in Div 2 this season. This team was seen to have a strong Club spirit as well with half the team being coaches of junior sides, and another two are members of the committee! The team was always competitive, properly attired, and a great advertisement for the Club.

### Club Person of the Year

### Christine Kennedy

Basically there were really only two nominations for this trophy, and the committee decided there was only one person who has stood all season. Chris has been on the committee for Devils for three years and a member of the Club for three more. She has always been a tireless worker for this Club, usually the first to volunteer for any job. This season she has been treasurer, and uniform officer (as most people know when she is chasing them for money), ran the canteen at Shaw road, sold raffle tickets at Kedron Wavell twice a month to fund raise for the Club (sometimes for other clubs who failed to turn up on their night, Chris would get a telephone call to help) scored at least three teams every week and organized the other scorers, organized sponsors, helped with raffles and obtaining prizes, BSA office and canteen duty virtually every time we had it, letterbox drops etc etc. Christine was awarded this trophy last season, and in fact has had to work even harder for the Club this season Her efforts have made my job as president easier, and I would like to personally thank her for her efforts, and say that she will be missed when she leaves.

## PERPETUAL TROPHIES

### Presidents Cup Award

### Les Bullock

This is Les' first season with the Club, coming to us from Western Wildcats. Les was nominated for, and elected to the position of Vice President, and has been a hard working addition to the Club all season. As well as coaching an U 16 side, he was a Coaching director, Club selector, always ready to help when workers were needed at letterbox drops, canteen duty, helping when other coaches were unavailable or giving advice when asked. Les was always prominent around the park on Saturdays, going to most of the junior games, and as many of the seniors as he could. Les also took the duties of organizing replacement players for teams when they were short. Les is also the instigator of the coming "Junior development Program" that will be of enormous benefit to our players, and the Club in years to come. Les has put a lot of time and effort into this project and I am glad to see that most of our junior players have signed up. Overall, I would say he is an energetic addition to this Club, and we are the better for having him.