

GO SOFTBALL



12th
ANNUAL MAGAZINE
1989 – 1990

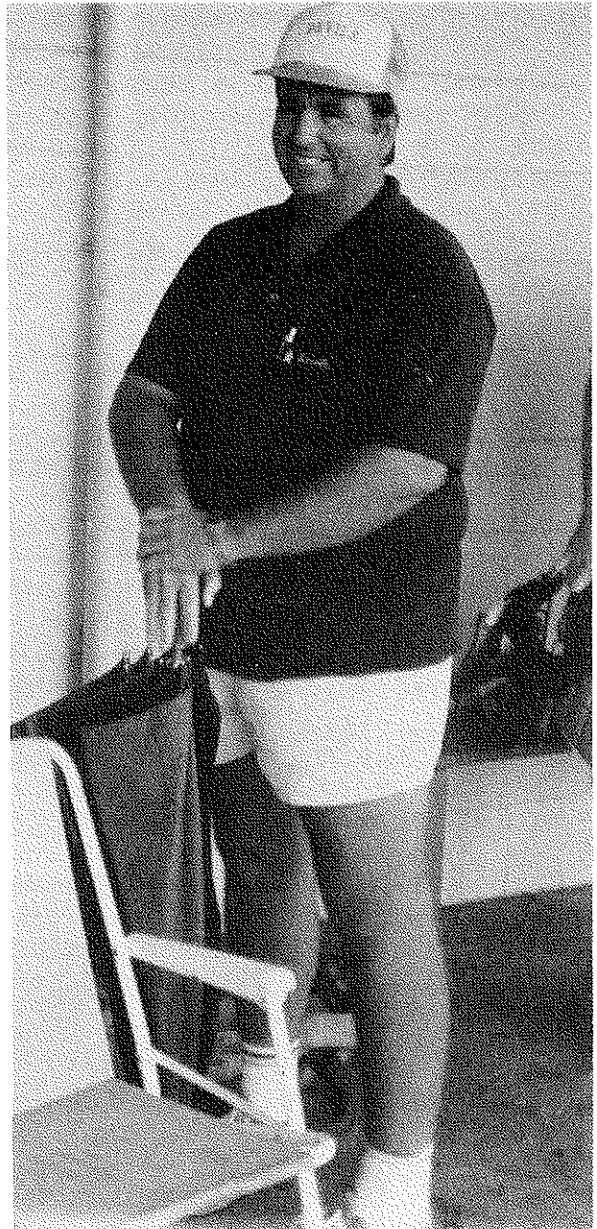
GO DEVILS

PRESIDENT'S REPORT

As we come to the end of another season, we can look back on the past season with mixed feelings. While being a quite successful season on the playing field, unfortunately it has not been a highly successful season financially for Devils Softball Club.

As you may know during the off-season Devils amalgamated with Goldwings Softball Club. In line with this the club switched to a new playing uniform. The new uniform proved to be a heavy financial burden that the club had to bear. By keeping our fees as low as possible we were relying heavily on fund raising activities to keep us going. This did not eventuate as all our fund-raising attempts were poorly patronised despite the great endeavours of few club members. Because of the poor response of most club members to these functions, the new committee for the coming season will have to look very seriously at increasing playing fees to enable the club to continue to exist. It costs the club a lot of money to put teams on the diamonds - we need your support!

It was with regret that the club learnt of the death of one of our men players, John Camarsh, as a result of a broken ankle sustained during one of the B2 games. Our sympathy is extended to his wife, Glenda, and family.



On the bright side of things Devils fielded thirteen teams this season and the time of writing nine of these teams had qualified for the finals berths. These included all six of our junior side and three of our seven senior sides, with the B3 and the Teeballers annexing minor premierships. The big disappointment was that the clubs top three teams have fallen to the wayside.

Two successful ventures for the club were our Annual Club Carnival and the Jupiters Casino Raffle. Thanks to Brian Mountany for again engineering the Casino Raffle. Our carnival was attended again by a large number of teams and was not as financially successful as in previous years. Thanks to Kay Smith and Debbie Devine who shouldered most of the organisation.

Congratulations to all Devils players who gained representative honours. Many players repped Brisbane and Redlands with quite a few continuing on to gain State Honours.

Many thanks to all those Devils who coached teams this past season, ably lead by our A1 coach Gary Ogg. It gives one a good feeling to see all these dedicated people giving freely of their time. Also many thanks to the scorers and managers - you all do a great job.

The club extends a huge vote of thanks to our hard working secretary Craig (MAGOO) Paterson. Everyone knows Craig's face and voice around the park and realises the magnificent job he does for the club - if only he'd get a couple of decent shirts.

Devils Softball Club also wishes to thank -

- Anne Morton our hard working Treasurer

- Joan Franklin for her efforts in successfully changing the whole club to the new uniform - great work Joan.

- Brian Mountney - our B.S.A. Delegate and Brisbane committee member for keeping Devils interests to the fore in headquarters.

- Devils Management Committee for your work and preserverence during the year.

- All the parents of Devils players for your support

- All our players for your efforts on and off the field.

It has been my good fortune to serve the club as your President during the last year. I hope each and everyone of you has received satisfaction and enjoyment from being part of Devils Softball Club. I urge you all to continue your association with the club and attend the Annual General Meeting, Monday, 23rd April, 1990 at 7-00pm.

We now look forward to next season - hope to see you all then.

---o0o---

Thought you all might be interested in reading some correspondence received by Brian Mountney following our Casino Weekend Art Union in December,

Dear Brian,

Just a short note to say how much we enjoyed our week-end at the Conrad International Hotel. It was great living in the lap of luxury even if only for a couple of days. The service was excellent and the show "Hollywood Legends" thoroughly enjoyable. Unfortunately our Casino chips didn't go far!

Congratulations to the raffle organisers for thinking up such a great prize, we'll be trying again this year. Best wishes to the Devils for a successful season.

Yours sincerely,

Barbara and Bob Gowan.

Club History

1971: Devils Softball Club was founded by Sandra Gaddes and Elaine Robinson. The first ever match played on 2nd October against Vikings and won by Devils 12 - 1. There were only 13 members in that year and the team made it to the Grand Final, but were defeated by Rebels by one run.

1972: There were four Devils teams; the A3 team winning the Premiership and one being Runners-Up in the Grand Final.

1973: This year we fielded 5 teams. The first nightball started at Hawthorne Park but no records were kept of that year's results.

1974: This year we had 7 teams with 47 Seniors and 36 Junior Players. One of our junior teams took out the Premiership.

1975: Devils fielded 7 teams again, T-Ball being entered for the first time with our girls taking out the premiership. We also sent our first team to Kumbia winning the Senior Trophy. Ros Culpitt had played 100 'A' Grade games.

1976: The games were moved to Perry Park this year. We had a change of name to 'REDLEGS' in the night competition and the team were the premiers of that competition. Devils took 3 teams up to Kumbia and won all three divisions. Sandra Ford(Gaddes), Joyce and Leigh Lester all played 100 'A' Grade games.

1977: Devils now had 5 Senior and 5 Junior teams, with T-Ball and 12A teams winning their Premierships. Diane Lowry played her 100th 'A' Grade game.

1978: We had 5 Senior and 6 Junior teams this year, with 5 in the Grand Finals and 2 being Grand Final winners. Wendy Fallis reached her 100th game. Southside Nightball Promotional Softball tournament started at Langlands Park with our team called 'RED DEVILS' winning the Grand Final. Our Redlegs team at Perry Park were Runners-up.

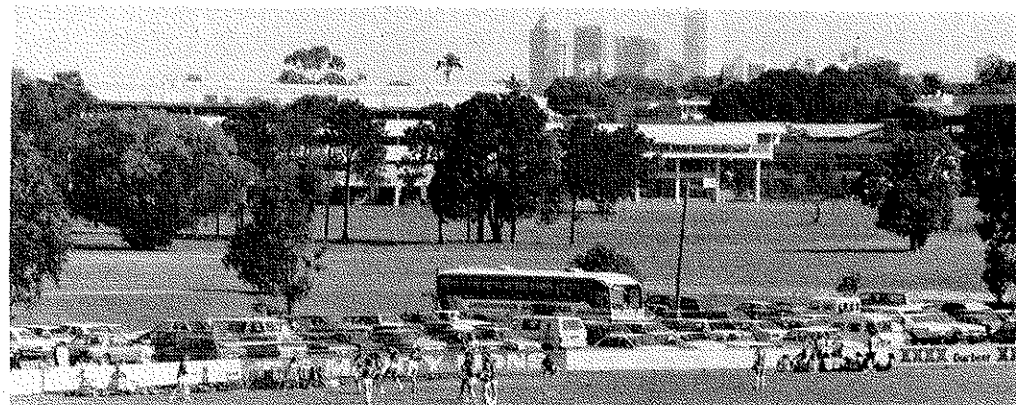
1979: This year Devils had 4 Junior and 7 Senior teams with 3 teams making the Grand Finals, 2 of which were Premiers. Our Redlegs were Grandfinalists. Patti Walker reached her 100 'A' Grade game, and Sylvia Van Der Valk played 100 Club games.

1980: We had 9 Senior and 4 Junior teams this year. Devils won the Brisbane Club Championship Trophy for the first time, with 10 teams making semi-finals, 2 of them undefeated. Nightball moved from Perry Park to the QSH Diamond at Downey Park. Our Southside team 'RED DEVILS' won the Premiership again. 200th 'A' Grade games played by Joyce Lester and Diane Lowry; Debbie McColm reached 100 'A' Grade games.

1981: Devils fielded 13 teams again this year, taking out the Club Championship again in Brisbane Day Softball Competition. 7 teams made the Grand Finals with 2 Junior teams becoming the Premiers. We sent 3 teams to Kumbia again and again took off the Club Championship, the A Grade and Under 16 Finals.

1982: We fielded 13 teams and 6 made the finals. We lost our Coaching Director and most of our A Grade players to other clubs. Devils sent teams to Kumbia and Redcliffe carnivals retaining the Kumbia Trophy. Pauline Harvey-Short, Kerry Pollock and Sue Gamble made their 100 A Grade games this year. A sad moment for the Club with the loss of our Patron, Bill Teqner, who is missed by all Devils. The Nightball teams fared well with the Under 17 team taking off the Premiership.

- 1983: The Club still a bit shaky with the loss of a lot of senior players managed to win only 3 Grand Finals. We had 13 Dayball teams and 3 Nightball teams this year. The A grade fielding Elaine Davies, a Canadian Pitcher. Sandra Ford played her 200 A Grade game this season. We fared well, winning all Junior Finals in the Rebels, Kumbia and Toowoomba Carnivals.
- 1984: Devils fielded 13 teams this year with 4 Junior teams becoming Premiers and T-Ball being Runners-Up. The Reserve Grade Nightball taking out the only senior Premiership. We attended Kumbia and Rebels Carnivals coming away with the Under 14 Trophy from Rebels. We entered a team in the Mixed Competition held in off-season at Redlands and reached the preliminary finals. This year saw the introduction of the new uniform into the Club in Nightball with a promise to the Seniors to wear it in the Dayball Competition in 1985/86.
- 1985: The Club fielded 12 Dayball and 2 Nightball Teams with 4 teams winning Premierships and 2 teams as Runners-Up. Bob Payne organised a team in the South Brisbane Winterball Competition and won the Premiership. Debbie Mc Colm played her 200th game in 1984 with her 250th 'A' Grade game this year.
- 1986: The Club fielded 13 Day and 2 Night teams with Premiers going to 16A, 14B and T-Ball; U16B and U14A being Runners-Up. We entered a team in the National Club Championships in Brisbane and performed consistently well. Bob Payne and Chris Welsh fielded a team in the South Brisbane Competition and came away winners for the second successive year. Craig Sinclair was the driving force for Devils to enter the Men's Competition at Bannister Park, where our A grade team were Runners-Up and two members of that team were announced in Brisbane A with three in Brisbane B Representative Teams. Craig and Steve Armitage were subsequently named in the Queensland Squad. Our Club was finally asked to field a team for the Medibank Series and finished a creditable fourth.
- 1987: This year was a mixed bag for the Club as a whole. The Men again competed at Bannister Park with a social team entering in the fun at B2 level. Our A Grade was again Runners-Up with the B2's just missing out on the final four. Our Carnival was again held in late September with a goodly profit being obtained to start the season. Medibank Nightball saw our participation at A Grade level, but the girls did not fare as well this year. Under 17's and below enjoyed a trip to Lismore in early February with all teams doing extremely well. We saw a drop in the number of players with our Club and only fielded 11 teams with A1, B1, both U16's and all the U14's making the semis. Six teams made the Grand Finals with 4 Premiers and 2 Runners-Up. The Under 12A's were First Round Leaders and finally Runners-Up.
- 1988: The men had teams in A, B and C Grades with the A1 Runners-Up for the third time. Our Carnival was again held in September. An Art Union for a Casino Weekend proved profitable for the Club. We competed unsuccessfully in the Medibank Nightball and we fielded 11 teams in the Womens Competition. The Lismore Trip was rained out.



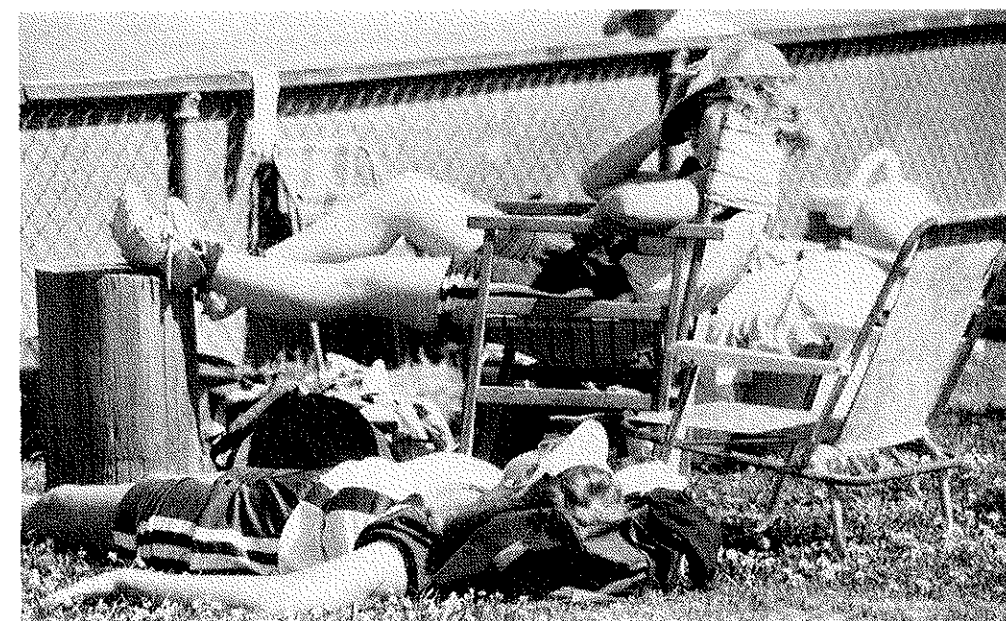
1989: The Club amalgamated with Goldwings from our A.G.M. Here we ratified the Life Membership given to Robyn Gillinder. We had 5 teams in the Mens Competition with B2 Premiers and A1 maintaining their Runners-Up spot. Our Carnival in September was again successful. Catcher's helmets became compulsory - another big expense. A and B teams competed in the Nightball with B taking out Runners-Up Trophy. The inaugural Brisbane Carnival saw our Veterans Team come away victors. Another Casino Weekend Minor Art Union proved profitable thankfully as the Disco held for the girls flopped badly sending the Social Committee into the Dollidrum. It is hard to run a Club without fund-raising and member support (maybe we'd all better have second thoughts). With 13 teams in the ladies comp., B3 were Minor Premiers, and Premiers along with T Ball, B1 and 16B were Runners-Up with five other teams making it to the Semis.

CARNIVAL REPORT

Originally 40 teams had responded to our Annual Invitation to compete in the Devils Carnival, however 3 withdrew and substitutes had to be found for the 24th September, 1989 with mixed reasons given for the withdrawal of those teams. This has led the organisers to believe they need a surcharge on nominations refundable on appearance or that the draw can only safely be made and printed up the night before and handed to teams on arrival at the ground. A sad thing to be looking at but perhaps just a sign of the times.

Nevertheless the day went well - the weather was glorious though Rob had said that "this was the year the drought would break!". The teams competed hard - it was the first time I've felt my mathematic prowess challenged - and the finals were real nailbiters. Thanks to all who came on the day and to the workers who give their all each year.

A good profit for the club even though we had excess stock - anyone for a Diet Coke?



MENS A GRADE TEAM REPORT

RUNNERS-UP

The 1989 season saw the team gain the services of two new pitchers which we all hoped would see us on our way to winning that elusive A Grade Premiership.

The team consisted of Stuart Kell, Craig Sinclair, David Foxover, Bill Smithson, Tony Whitlred, Chris Welsh, Larry Welsh, David Kissick, Hamish Strachan, Grant Henderson and Steve Harding. With the assistance of Roy Wyatt, Steve McDonald, Ian Johnston, Rick Gill, Clem Beavis and Dave Gilbert. Thanks for filling in fellas.

The team Won 10 games, Lost 2 and Drew 1.

The stop start season due to the bad weather had a big effect on the continuity of the standard of play. Once the weather improved, so did the enthusiasm of the team.

The addition of a pitcher of Hendo's standard to Devils team was something to watch with him constantly striking out half the opposing batters.

Once again the Grand Final was nailbiting stuff with the side going down 7 to 6 in the 8th innings on a passed ball.

The first 3 innings were scoreless with Wolves scoring 4 runs in the 4th. The 5th innings saw Devils score 5 runs with Larry Welsh finally coming good with the bat and hitting one of the biggest home runs seen at Bannister bringing in 2 runners. We scored one in the 7th and Wolves scored 2 runs.

Congratulations to the following players picked in Brisbane Rep

teams - David Kissick
Larry Welsh
Grant Henderson
Hamish Strachan
Craig Sinclair
Ngairé Huston Scorer for Bne and QLD Men

MENS B1 TEAM REPORT

Well another season has finally come to an end. For the B1's, it wasn't a very successful year as they didn't make the finals, but I think we all had a good time anyway.

The B1's had quite a difficult year due to a few injuries and absences. It got to a stage about half way through the season where I didn't know which bodies were taking the field until just before the game was due to start. Due to circumstances beyond my control, we were constantly borrowing players to make up numbers. Even though we didn't win as much as everyone had hoped, I think that everyone learned something (whether it was softball related, or how to exercise the elbow at the clubhouse, I'm not too sure!!...) and enjoyed doing it anyway.

I'd like to thank all the guys for their continual support and I hope that they all come back again next season. I'd also like to say a big thank you to Vicki Gannon, who was our very capable scorer and put up with all my ranting and raving. Also a huge thank you goes to the guys from the lower grades who filled in for us and who are too numerous to name - thanks guys, without you we couldn't have taken the field. Thanks also to the supporters we had each week - it was great.

All in all, we had a pretty fantastic season and it can only get better in the year's to come. See you all next season.

Tracey.

Team Members were Rick Gill, Roy Wyatt, Clem Beavis, David Billsborough, Michael Miller, Peter Kingsley, Bob Gannon, Allan Connor, Gary Ogg, Hamish Strachan and Brian Lacey.

MENS B2 TEAM REPORT

PREMIERS

1989 PREMIERS GRAND FINAL SCORE 25-6 against Royals.

Coaching this team has been a great experience for me over the past two seasons. The dedication and devotion to the sport as well as to the club itself was shown by all players involved in this team.

I feel that the responsibilities and duties in which each player had to perform was carried out with much respect.

This team trained the whole season together and took their games very seriously, as they were out to prove they could win a grand final and did so quite convincingly.

The loss of John Camarsh early in the season through injury, and then the shocked news of his passing away was felt by all players and club members. We will always have fond memories of John; he was a much liked person.

John's wife, Glenda has since attended our Men's Trophy Night and presented a Trophy to Andrew Sloman for Most Improved Junior. This trophy was donated by Devils players and supporters and was called the John Camarsh Memorial Trophy.

Ian Johnston, Steve McDonald, Chris Paterson, Scott Morrall, all from this side became Brisbane Rep. Players along with these men, Ted Devine, Jamie Ogden, Mark Ogden, Andrew Sloman, David Gilbert, Brian Mountney, Paul Garden and Grahame Sloman, who had to withdraw through work commitment made this side complete.

Many thanks go to Dot Pullen, our Scorer, and Trish Foxwell for her help with coaching this team. A huge thanks go to all of our supporters - they play a major part as spirits are always high and players feel appreciation for their efforts.

Your coach,

Debbie Devine.

MENS B3 TEAM REPORT

Well, this team was a mixture of both experienced and inexperienced players. With this, and the fact that they didn't train and their warm-ups were nothing to talk about (men!), they didn't do too bad considering.

As the season wore on, the new players started to learn the ins and outs of the game with help from the old, oh sorry - I meant the experienced, players, showing them the ropes.

Also thanks to those players who filled in for us throughout the season.

Chris.

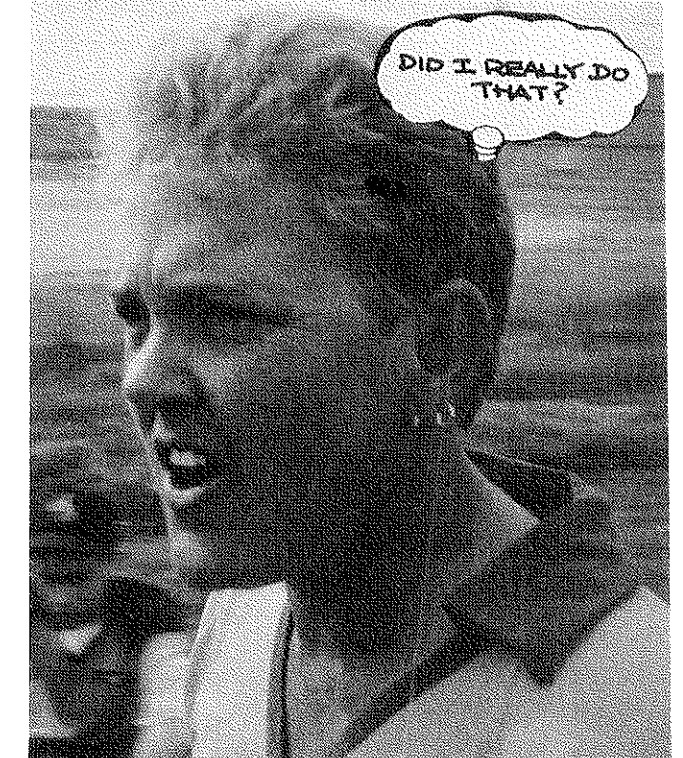
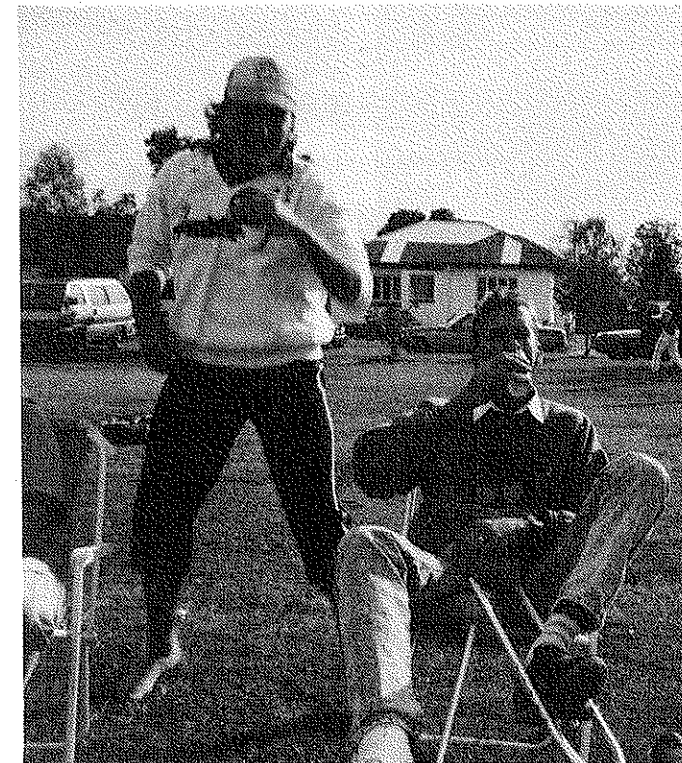
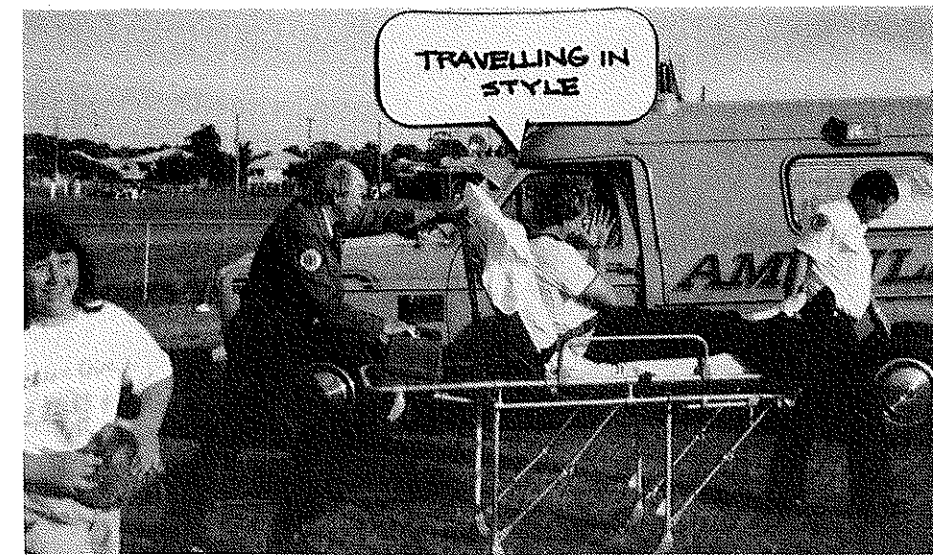
MENS C GRADE TEAM REPORT

With a reluctance of team members to get out of bed on a winter's Saturday morning, we spent a lot of time looking through the phone book in search of new players. Despite this, there were a few dedicated players who supported the team, even if the coach wasn't there.

I would have loved to give all the players a trophy but those who showed they had the potential to follow in the coach's footsteps were Chris, Randy and Geoff.

Thanks to all the people who helped out this year - Debbie, Chris, Debbie, Cheryl, Trish and Dot. Check yas all later.

Kerri-Anne.



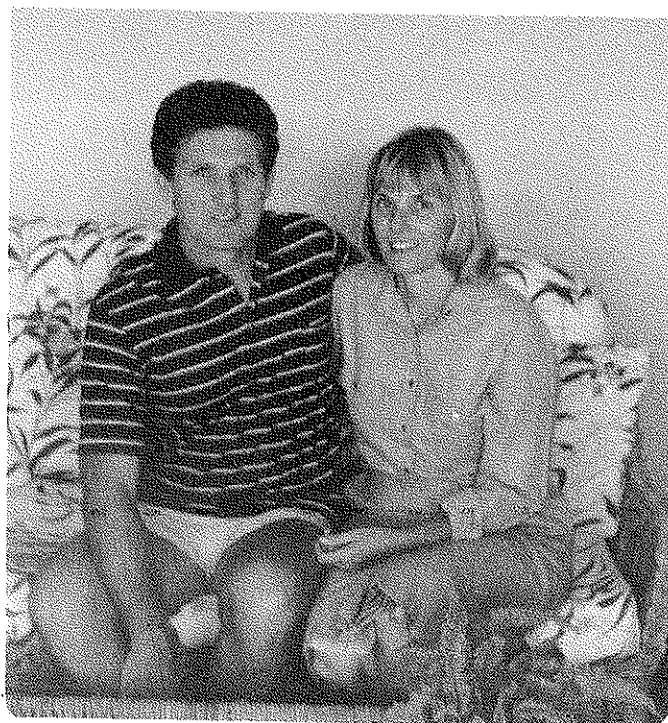
VALE - JOHN CAMARSH

12th March, 1944 - 11th July, 1989.

It was with great regret that Devils Softball Club learnt of the passing of John Camarsh, a member of the Mens B2 team, as a result of an injury sustained in a game last season.

John was a staunch supporter of all Junior sports and the knowledge he was able to pass on will be sadly missed.

Our deepest sympathy is extended to his wife Glenda and family.



As a tribute to John Camarsh, the Devils players have donated a trophy in his memory to be awarded to the Junior Player of the Season. The inaugural winner was Andrew Sloman and John's widow, Glenda, presented him with his trophy at Softball Headquarters last September.



DEVIL'S COMMITTEE 1989/90

PATRON.	KEN GADDES SNR.
PRESIDENT	BOB GANNON.
SENIOR VICE PRESIDENT.	KAYE SMITH.
JUNIOR VICE PRESIDENT.	DEBBIE DEVINE.
HON. SECRETARY.	CRAIG PATERSON.
HON. TREASURER.	ANNE MORTON.
EQUIPMENT OFFICER.	KEITH MOORE.
UNIFORM OFFICER.	JOAN FRANKLIN.
SENIOR REGISTRAR.	LYNN MELLISH. (retired).
JUNIOR REGISTRAR.	BRIAN MOUNTNEY.
COMMITTEE.	NANCY GARDEN.
	DOT PULLEN.
	JUDY VERNON.
	ROBYN GILLINDER.
LIFE MEMBERS.	ELAINE ROBINSON.
	SANDRA FORD (GADDES)
	ISABEL TEGNER.
	SHIRLEY POLLOCK.
	ROBYN GADDES.
	ROBYN GILLINDER.
	DOT PULLEN.
	FAY FRASER.
	KAYE SMITH.
	CHRIS MORRIS.

ANNUAL GENERAL MEETING

MONDAY, 23rd APRIL, 1990 7 p.m.

KEDRON/GRANGE FOOTBALL CLUB

A1 TEAM REPORT



Nancy Garden(Manageress), Jodi Gregory, Margaret Mountney(Scorer), Leanne Mountney, Stephanie Gill, Allison Waters, Tracie Blanch, Kelli Moore, Tina Corbett, Gary Ogg(Coach).

Absent: Shelley Payne, Kerryn Harry, Kim Gunderson, Peta Hinshelwood and Fiona Hinshelwood.

The 1989-90 season should have been a most successful one for Devils. All the signs were there to indicate success - a good combination of youth and experience, talent, a full pre-season training programme, a solid depth of players and a Committee that offered every moral and financial assistance possible.

The fact is however that we finished equal fifth in a competition that was winable. Brisbane softball is in a period of transition - waiting for a new club to dominate for the next few years as Redsox, then Rebels and then Bears did in the 1980's.

The team to dominate could have been Devils. Unfortunately not all the players in this year's team were equal to the task - not physically - the skills are there - but I believe we let ourselves down mentally.

Each player needs to look into themselves to see if and how they let the team down; whether through lack of dedication, application, faith in team mates or themselves or whatever.

Because of poor performance there must be changes to next years team and the amount of financial support the Club provides to the "A" Grade.

The basis is present in this team to take the 1990-91 Premiership by storm - I look forward to seeing Devils become as successful as I know they can be and achieving that elusive Premiership.

In spite of our lack of success as a team there were some excellent individual performances during the season. These are reflected in our trophy winners.

MOST VALUABLE PLAYER - LEANNE MOUNTNEY

Leanne has well and truly dominated Devil's performances this season. Best batting average, Most R.B.I.'s, outstanding fielding etc, etc, etc. She has now established herself as one of Brisbane's highest quality and most consistent performers - in the next few years, I, and many others predict she will go on to establish herself as one of Queensland's and ultimately Australia's finest.

MOST VALUABLE OFFENSIVE PLAYER - TRACEY BLANCH

As lead off batter Tracey had an outstanding season. The regularity of her being on base with a single to left or centre field was unbelievable. This led her to become our most scored player and set up many of our wins. It was unfortunate that Tracey had to finally succumb to a serious shoulder injury, which will require surgery, late in the season when her offensive consistency was sadly missed.

MOST VALUABLE DEFENSIVE PLAYER - TINA CORBETT

Our lack of success this season can in no way be laid at the feet of the pitcher Tina Corbett who was the model of consistency and often Tina did a superb job to control defensive support from team mates.

her hard work and dedication over the overcoming a serious ankle break, stamp

trophy it would be for THE MOST led to Stephanie Gill. Steph missed as but once back showed all the id spirit missing from some team mates.

others, no matter what grade, should

who did such a commendable job in ason. These players performed with from the experience.

Bob Gannon, Scorer Margaret Mountney and Manager Nancy Garden - they kept cheerful (most times) and positive (always) during the season and more than once prevented me from committing suicide or homicide on the bench.

Gary Ogg.



A2 TEAM REPORT



Lorelle Armitage, Bob Gannon(Coach), Nickie Wardle, Kathy Rosenberg, Graham Smallcombe(Manager), Margaret Mountney(Scorer)

Alison Kelly, Samantha Fyfe, Karla Manning

Kathy Smallcombe, Sharon Mountney, Toni Larsen

Absent: Ruth Armitage.

Devils has completed a disappointing season. Disappointing in the fact that it was a team that contained undoubted ability with a good mix of experience and youth that at one stage during the competition was able to beat comfortably all the teams who contested the finals. During the season we were unlucky to lose to some of the lower teams due to our loss of players on representative duty, through injury or through the fact that other clubs played down A1 players rather than use lower grade players to bolster their A2 teams.

My congratulations to all the players on their efforts on the field and my thanks for your support through the season. You all have fine futures in the game - even the oldies - and many of you should be striving to make A1 in the near future.

My special thanks to Graham Smallcombe - the best manager money can buy - for all his great work during the season. Also to Margaret Mountney our scorer for her efforts and assistance.

Thanks also to Chris Butler for his assistance and to all the lower grade players, especially Michelle Vernon, who helped out by filling in or sitting on the bench. Also to Ruth Armitage who looked after the team when Chris and I were unavailable.

Best of luck in the future girls - see you with Devils next season!

Bob Gannon.

A3 TEAM REPORT



Roy Wyatt(Coach), Rachael Lee, Tracey Wyatt, Therese Kelly,
Lara Hudson, David Anderson(Assistant Coach)

Robyn Gillinder(Scorer), Amanda Garden, Tara Soppa, Jacqui Lynch,
Jodie Weller

Paula Warner, Tracey Gillinder, Tammie Dare

Unfortunately, at the time of writing this report, it looks as though we will miss the final four by one point. When you consider that 80% of our losses were by one or two runs and that rarely did our opposition score more than six or seven runs, it was truly a solid effort over the season. The fact of the matter was that we did not score the runs to win the games. If anybody can give me the secret of taking practice batting form into a game I would appreciate it immensely. Given that the majority of the team were very young, I can only hope that the experience gained and the skills developed will lead to vastly more fruitful results in the future seasons. It has been said that this team is only one year short of a strong A3 outfit.

Our spearhead this year has been Rachael Lee. Rachael came up from Wynnum this year determined to improve her skills. Her enthusiasm and willingness to work hard at her pitching (and all other skills) both at training and at home sets a fine example to all other players. The whole team reaped the rewards of her efforts.

Paula Warner's enthusiasm and encouragement to all the other players played a significant role in everybody's improvement as the season progressed. Tammie Dare remains the "quiet achiever" of the team. Tammie is truly a utility player and, while one look at the statistics shows she is well up in the list, most of the time you would hardly know she is there. Tracey Wyatt began the season as catcher but a mid-season stint of work in Melbourne caused her to miss a few games. Her enthusiasm and consistency (especially with the bat) was sorely missed during that time. Jacqui Lynch gave her all during the season and improved significantly as she became more confident. We all wish her well in her new career.

Tracey Gillinder became a real utility player occupying at least four positions during the season. She also showed marked improvement as the season progressed. Tara Soppa finally found her niche at second where she pulled off some great plays. Not bad for someone who was initially reluctant to come up from B1. Therese Kelly at shortstop saved us more than once in the field. Jodie Weller showed enough ability to suggest a long career in the game. Her attitude and punctuality was a model for all. Lara Hudson will definitely make a big impact in the future when she starts believing in her own ability.

Our last recruit was Amanda Garden. Amanda was having back problems early and only agreed to play when this cleared up and Tracey was in Melbourne. She played exceptionally well in the outfield and, if she can keep herself physically in shape, she has a brilliant future.

In closing may I offer my sincere thanks to the following:

David for his coaching assistance.

Robyn for her extremely efficient scoring and her tireless encouragement.

Paula for assisting in the coaching department, especially when I was unavailable.

Players parents and friends for their support and friendship.

All players for their co-operation which has made this season such an enjoyable experience.



B1 TEAM REPORT

RUNNERS-UP



Bob Payne(Coach), Vicki Gannon, Sue Hawley, Klara Szabo, Cheryl McDonald, Chris Morris, Steve McDonald(Assistant Coach)

Trish Foxwell, Kerri-Ann Foxwell, Debbie Chapman, Debbie Devine

Absent: Donna Penney

At the time of this submission we are in second spot on the ladder and have good prospects of taking out the Grand Final.

I would like to thank the players who have contributed to the team's success by filling in as pitchers after our starting pitcher for the season joined the exclusive club "Family Expansion". Those who stepped in to take on such an important role did extremely well under adverse conditions.

Players literally played left right out and thereabouts in order to find positions that suited the individual players. It all turned out for the best though which is obvious by our placing on the ladder and by the way our team has pulled together. Our batting and fielding statistics show the calibre of the players as a team. With a team batting average of .352 and a team fielding average of .874 it is understandable how we have established our well deserved recognition.

I would like to thank Vicky Gannon for taking on the role of captain and training the team when I was unable to due to work commitments. Many thanks also to Steve McDonald who did a great job on first base assistant coaching and helping out at training. Thanks to Dot for scoring and colouring in the all important runs. To the spectators for their continual support, it has been much appreciated. Most of all I would like to thank and congratulate the girls on a great year which has been a credit to the Devils Club.

In the event of my retirement as coach, I would like to take this opportunity now to thank Devils Club as a whole who have given me the opportunity to be part of their organisation. The people have been friendly, always offered advice and support and I could not have wished to have been associated with better people and the Club as a whole that Devils have.

Many thanks.
Bob Payne.



B2 TEAM REPORT



h)

... and so
... us to field a side. Without them we
would not have achieved the success of this season.

We would also like to thank Dot Pullen, our scorer and Jeff Morton,
our manager.

We look forward to seeing all the girls next year for another great
season.

KATHY GRIMES -- Kathy is a capable pitcher, who has good glove work and
her consistent batting was an asset to the team. She needs to believe
in her own ability, especially as a pitcher. With more confidence and
some application she would improve all facets of her game.

BRONWYN MILLER -- Another solid performance from Bronwyn this season.
She played confidently at third base and caught capably when asked.
Bronwyn's experience was invaluable to the team and her team spirit
was especially evident in her solid performance with the bat.

DEBBIE TREWIN -- Debbie is a very talented player who approaches the
game in a very competitive and aggressive manner. Debbie is a true
team player who gives 100% at both training and during a game. Her
ability as a catcher and with the bat ensures that she has the
potential to play at higher levels.

MICHELLE GRIMES -- Michelle had a good season at first base. Her
fielding would improve if she had more confidence in her own
abilities, especially her throw. Michelle put in a solid performance
with the bat and with more experience she has the potential to attain
higher standards.

ANNE MORTON -- As one of the more experienced members of the side, Anne
was a valuable team player and a capable 2nd base person. Her ability
with the bat would improve with confidence.

MELYNDA PATERSON -- Melynda was asked to play shortstop this season, a
position she had not played before. She adapted to the task
confidently and showed great potential in both her fielding and
batting skills. Unfortunately injury caused her to miss a good part
of the season. If she doesn't run into any more brick walls, Melynda
has the ability to play at higher levels.

KYLIE PRIDHAM -- Kylie joined our team midway through the season being
upgraded from 16B. She was a welcome addition to the team, playing
shortstop with solid ground work and a consistent throw.
Unfortunately she was sidelined for a good part of the season due to
illness. With application Kylie will improve her game immensely.

GAYNOR GILLAM -- Gaynor was one of our most consistent players. She
played outfield and gave 100% on the field, making some great plays at
home. With a safe pair of hands in the outfield and consistent
batting, Gaynor is an asset to any team.

CHERYL GALLAGHER -- Cheryl has been a valuable player in our team. As
well as playing outfield she has been our back up pitcher and able to
get us out of trouble when necessary. You can always hear her voice
while on the diamond, which is a great encouragement to the team.

CHRIS IORIO -- Chris was a post X-mas addition to our team. She is a
great team player who is very competitive. She played outfield with a
great deal of ability and also pitched competently when asked. With
confidence her batting skills will improve.



B3 TEAM REPORT

PREMIERS



Emma Symons, Donna McDonald, Maree Sweet, Melanie Clark, Sheila Gralton, Terri McDonald

Steve Roberts(Coach), Gail Adamson, Dannielle Valzacchi, Carol Fyfe, Leanne Lennox, Phyllis Hurford

Absent: Faye Fraser

At the start of the season Devils B3 had a total of three players and it seemed that the Club would not be able to field a team in time for our first match.

Not only did we field a team, but we defeated Panthers 16 runs to one. From that point on the writing was on the wall- the Devils B3 would be a team to be respected.

Twelve wins, one draw, and only two defeats and the Minor Premiership was ours. Well done ladies.

Much thanks must be given to Trevor Hurford and Bruce Fraser for all their help in moulding together a very talented team. It makes a coach's job much easier with people with their knowledge of the game helping out.

As for the team, all players deserve praise for their efforts both at training and during the games.

Infielders - Gail Adamson, Carol Fyfe, Phyllis Hurford and Emma Symons.
Outfielders - Donna McDonald, Leanne Lennox, Faye Fraser, Maree Sweet and Danny Valzacchi.

Pitcher - Sheila Gralton

Catcher - Melanie Clark

Designated Batter - Terri McDonald

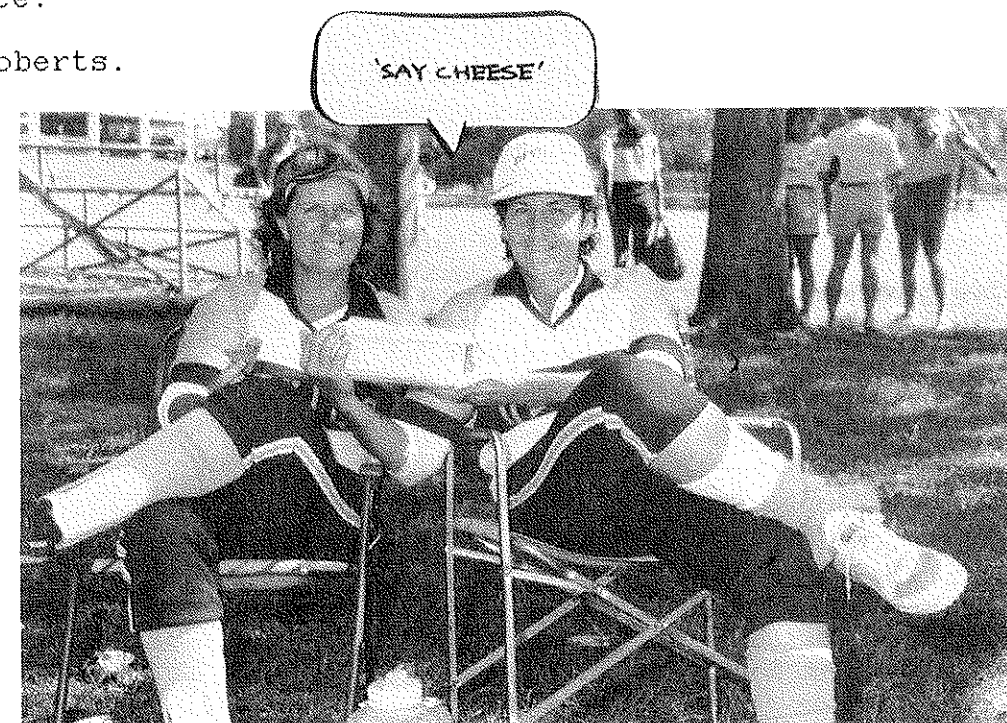
The players proved all season they were the team to beat.



Thanks also to Amanda Fyfe who filled in during the season with great results. During the season our girls scored 188 runs for and only had 68 runs against. Proving that not only were we the best defensive team in the competition but also the best batting combination.

Once again thanks ladies and a special thanks from us all to Trevor and Bruce.

Steve Roberts.



Paul Garden(Coach), Larissa Wills, Janelle McCarthy, Diane Paterson,
Ted Devine(Assistant Coach)

Nola Sheldrick, Wendy Walden, Garlene Downey

Robyn Blackmore, Nancy Garden, Barbara Stewart

Absent: Bernadee Collins, Sandra Guilk, Yasmin Abey

THE WONDERFUL C1'ers - LAST BUT NOT LEAST!

The 89/90 season has come and gone like a storm,
Our wonderful C1'ers started out in poor form,
It was evident that they were an inexperienced team,
As runs across the plate, at first, were rarely seen.

They tried different pitchers and most were off the mark,
With their opposition belting them all over the park,
And with scorelines like thirty to nil or so,
Ms Wonderful went to the plate and said 'give us a go'.

With Larry as catcher and Yasmin on first,
They finally found out they weren't the worst,
And with Knockers fielding great at third,
The C1'ers were getting the outs they deserved.

The opposition run rate was stemmed a lot,
With great plays from the 'Sarge' at short stop,
And if one did happen to go high and wide,
Janelle rushed in to help out the side.

Barb always had problems stealing to second,
But Bernie did the job with a little beckon,
Wendy really didn't like being out at right,
But at second she really put up a fight.

Robyn had played the game before,
She showed the girls how to hit and score,
Whether it was a run or a kick,
Next season she'll show us all the trick.

Fairly early in the season,
Nola made base, and for some reason,
Weedy sent her from third to home,
Where she collided, cartwheeled and broke a bone.

Coaching on first was our poor Ted,
Who would stand there in wonder and shake his head,
He said 'oh why! oh why! did I ever commit,
Myself to stand here and suffer this shit!'

The C1'ers as a team, played it as they should,
They gave the very best that they really could,
Come rain, hail or sleet or shine,
They would end up in the pig-pen feeling just fine.

Every other team they played and met,
Had their goals high and set,
But each learnt a lesson in hind,
That there's more to the game than winning every time.

Deep from our hearts we'd like to wish,
Our thanks to Dot, Kay, Robyn, Debbie, Anne and Trish,
For their dedication, support, advice and more,
By coming to the C1'ers to cheer and score.

Thanks to Leslea, Tracey, Karen and Penny,
For playing with us when we didn't have many,
You can only wish that you can play,
As well as your 'mothers' when you reach THAT day.

Oops, We almost forgot,
The very best supporter of the lot,
Thanks Magoo,
For being YOU!!

YASMIN ABEY: Yasmin is one of the younger members of the team who was a little quiet early on but soon made her presence felt vocally and with flair and thought at her position of first base.

ROBYN BLACKMORE: Robyn is one of our more experienced team members who is able to play in any position on the field. This experience was shown in the way she backed up and hyped her teammates with her endless chatter.

BERNADEE COLLINS: Bernie gave her all at second base, right field and catching during the season and her chatter could be heard wafting across the diamond from whichever position she played.

GAYLENE DOWNEY: "Knockers" did a great job in her first season, at third base and centrefield. Willing to get in behind the ball and give anything a go.

NANCY GARDEN: "Ms Wonderful" is another of our experienced players who pitched and played at second base. Did a great job on the plate but had trouble keeping her legs together on ground balls.

JANELLE MCCARTHY: Janelle took some great catches at left field during the season and likes to give the ball a whack when in the batting box, running bases with speed.

DIANE PATERSON: "Sarge" is our on-field organiser as she patrolled the position at short stop, hyping her teammates and giving advice when needed. Made bases on numerous occasions with well placed hits through the infield.

NOLA SHELDRICK: Nola is one of our keenest players who unfortunately suffered a broken wrist early in the season when attempting to make home plate. Loves training and learning. A real team person as she turned up for most games after her injury to give support from the sidelines.

BARBARA STEWART: Barb played all outfield positions, first base, had a go at pitching and loves catching. Willing to give anything a go and is a good striker of the ball. Has trouble catching with both hands!!?

LARISSA WILLS: Larry joined the team a little later in the season and her presence was felt with some "BIG" hits to the outfield. A quick runner on bases, smiles all the time, enjoys the game and takes no notice of the coach's signals.

WENDY WALDON: Wendy is another young member of the team who appeared to be very quiet early on in the season. She gave her best at second base and right field and her batting improved dramatically as the season came to a close.

TO KEITH - WITH THANKS



Just a few words to thank you for the work you have put into our Club over a great many years. You have served on the Committee, coached a team, looked after equipment and done ALL the printing asked of you with never a negative murmur.

We hope in your retirement from "paid" work you will find a little time to sit back and relax.

UNDER 16A TEAM REPORT



David Billsborough(Coach), Kym Huddart, Kylie Gerlic, Kim Andrew, Judy Vernon(Scorer), Dawn Billsborough(Assistant Coach)

Angela Garden, Jennifer Shield, Raylene Sambrook, Brandi Earle

Terine Hull, Michelle Vernon, Paula Ovenden

Apart from one or two more forgettable efforts, the girls put in a fairly consistent season to finish equal second on points with Saints, behind the unbeaten (at the time of writing) Bears. From a coach's point of view they were a great bunch of girls and we have thoroughly enjoyed our association with them. There was plenty of enthusiasm and team spirit, particularly towards the business end of the season when it matters most, and this resulted in some high standard softball. Many thanks to our parents who supported us by having the girls there on time each week, and for staying on to watch. Special thanks to our scorer Judy Vernon, and to Frank Shield, our manager. Your efforts are greatly appreciated. Paul "Pops" Garden merits special mention for providing the bus service and for being available each training to help out, despite costing him the odd bump on the head. The team lined up this way:

KYM HUDDART (Pitcher/Utility): A delightful girl for any coach to have in their team. A reluctant pitcher who never failed to produce the goods. Kym could play any position on the field with aplomb. A great future.

ANGELA GARDEN (Pitcher/Catcher): Another girl with heaps of potential, but needs to learn to get tough. Strong batter with undoubted pitching and catching talent.

KYLIE GERLIC (Catcher/Utility): A great lead-off batter who gets on more often than not. Solid catcher, but a beautiful outfielder with a very aggressive attitude - capable of going a lot further.

JENNY SHIELD (1st Base): Strong batter and a very safe 1st base. As Jenny learns more about the game, she will develop into a very solid team player.

PAULA OVENDEN (2nd Base/Outfielder): Definitely prefers 2nd base where she displayed a safe pair of hands. Paula is a better batter than she thinks she is, and as her confidence grows, so too will her hitting prowess.

TERINE HULL (2nd Base/Outfielder): A thinking softballer with a great bunt. Needs to develop power, particularly with her throw, and probably did not perform quite as well as the previous year.

MICHELLE VERNON (Shortstop): Another player with a great future. Bats well and made some great plays at shortstop. Michelle has the attitude and ability to go all the way.

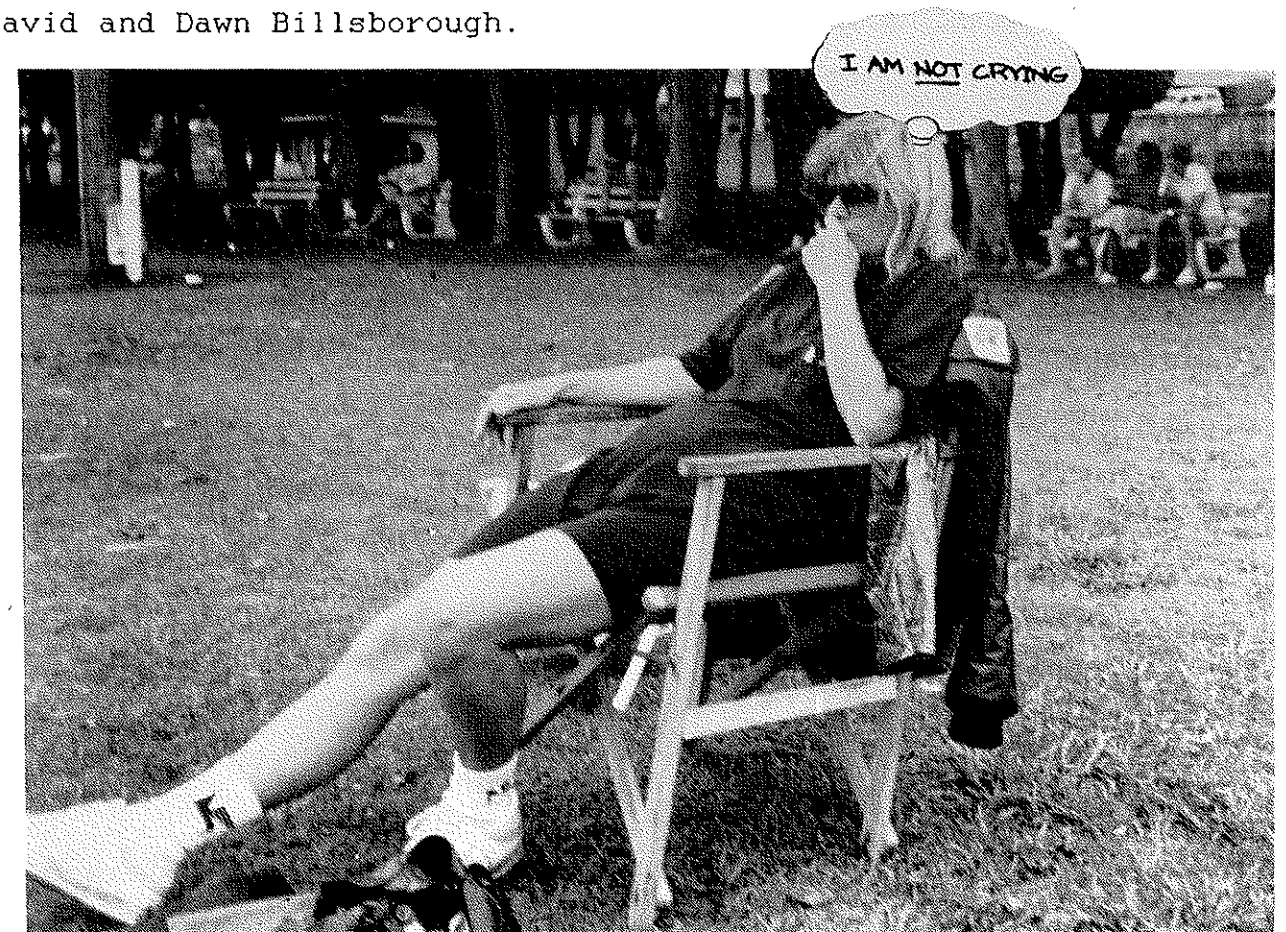
KIM ANDREW (3rd Base): Another coach's delight. A great trier who listens and learns. Kim was responsible for some tremendous outs at 3rd. Needs to work on her batting.

RAELENE SAMBROOK (Outfielder): A great improver throughout the season. Needs to continue developing confidence in her own ability. Raelene took some nice outs, particularly later in the season.

BRANDI EARLE (Outfielder): Brought up from the "Bs" mid-way through the season, Brandy more than held her own in the higher company. A great hustler, who also picked up some nice hits at vital times.

Hopefully these girls will all remain in the game, thus ensuring the future of the Club. Ladies, whether you remain with the 16's next year or step up into the open brigade, Dawn and I thank you all for your co-operation and enthusiasm, and wish you every success as you pursue your careers in the future. Thanks for a memorable season.

David and Dawn Billsborough.



UNDER 16B TEAM REPORT

RUNNERS-UP



Chris Butler(Coach), Maretta Francis, Rochelle Maunder, Tamara Bird, Tracey Paterson, Leslea Thompson, Sharyn Penney(Assistant Coach)

Dayle Griffin, Amanda Fyfe, Donna Burley, Jodi Hurford, Kate Symons

They came from near and far. A mischievous rabble with a Kiwi coach only spelt one thing - 'TROUBLE'. There was only one way to go and that was up; and that is exactly what they did.

One word to describe this season would be improvement. In my opinion both as individuals and as a team they have done just that.

The first half of the season before the Christmas break was really a sorting out process where the girls and I had to get used to each other and sort out where everyone was best placed and what worked well for us. We had some good play and bad play.

The second half of the season is where it all came together. The team has great potential and sometimes it would show out with some really good fielding (a triple out in one game). Their batting improved a lot as the season went along and as yet have not lost a game since Christmas.

As I write this they are second on the table and are in the semi-finals, in good spirits to take the premiership.

The girls have been a lot of fun to be with. At times a little too lively but showed that when they put their heads down they could achieve good results.

I would like to take this opportunity to thank a few crew members. First of all Sharon Penny, my assistant coach. She was probably a bit suspicious at times of my foreign coaching methods but was always there to back me up and keep me from making too many wrong decisions.

Lee Burley was done an excellent job as manageress and without her organisation and helpfulness, the ship would have sunk. She learnt how to score and took care of the gear for a lot of the season and I would recommend her for any future positions of employment (what a reference).

My thanks also to the Mums and Dads for their support and being the fans on the sideline. A special mention to Mr. & Mrs. Griffin for their hospitality at the Christmas barbecue and the Patersons for their help and for looking after the gear. Thanks also must go to the under 14's who filled in when we had injury problems.

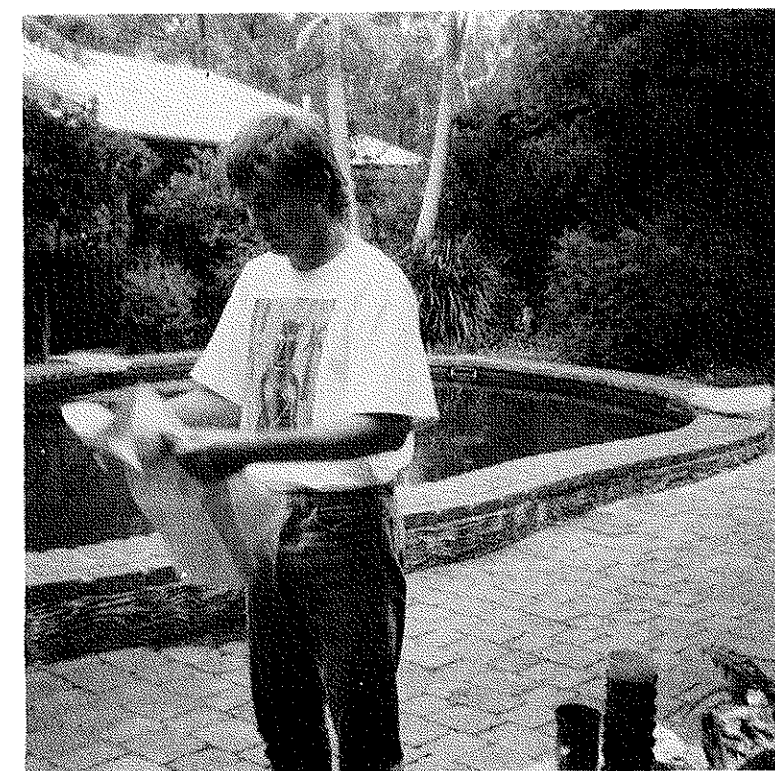
All in all a relatively satisfying season with hopefully more to come.

I hope the girls got something out of it all. I know I certainly did.

Many thanks to you girls for putting up with me and many thanks to me for putting up with you. I hope you have made some new friends and that the future will be good to you.

For a bunch of Aussie's and a couple of half-cast Kiwis, your not a bad bunch.

Chris Butler



UNDER 14A TEAM REPORT



Debbie Devine(Coach), Jenny Wilkins, Dot Pullen(Scorer),
Faye Fraser(Manageress), Amanda Cornish

Melissa Fraser, Nicki Lamb, Susan Fraser, Natasha Robinson
Stacey-Leigh Collins, Susan Oliphant, Joanne Kopp

Absent: Trish Foxwell(Coach)

Many thanks to Chris Morris, Gary Ogg, Bob Gannon, Faye & Bruce Fraser who stood in and looked after this team for me throughout the season.

As you read this report it is the last fixture game of the season and we are hoping for a win. At this stage we are third and to be second place would be better. You will have to wait and see what the outcome is. I hope you can withstand the suspense.

Now to this team of U14A girls. Where do I start, who do I start with? Lets begin with our youngest member of the side:

SUSAN OLIPHANT - Position 2nd base and one of the best I have seen in all my years' coaching juniors. Susan is a very dedicated person and is a pleasure to coach on and off the diamond.

SUSAN FRASER - Pitcher - Susan has proven to be a very fast pitcher, leaving the opposition standing in the batters box time after time. Not much fielding has had to be done this season because either "K2s" were the specialty of the day or hits to the infield were easily handled.

MELISSA FRASER - 1st Base - Her quick thinking and fine fielding makes a safe pair of hands to have on 1st base. Melissa is also willing to bat when needed to do so and is fast to move between bases.

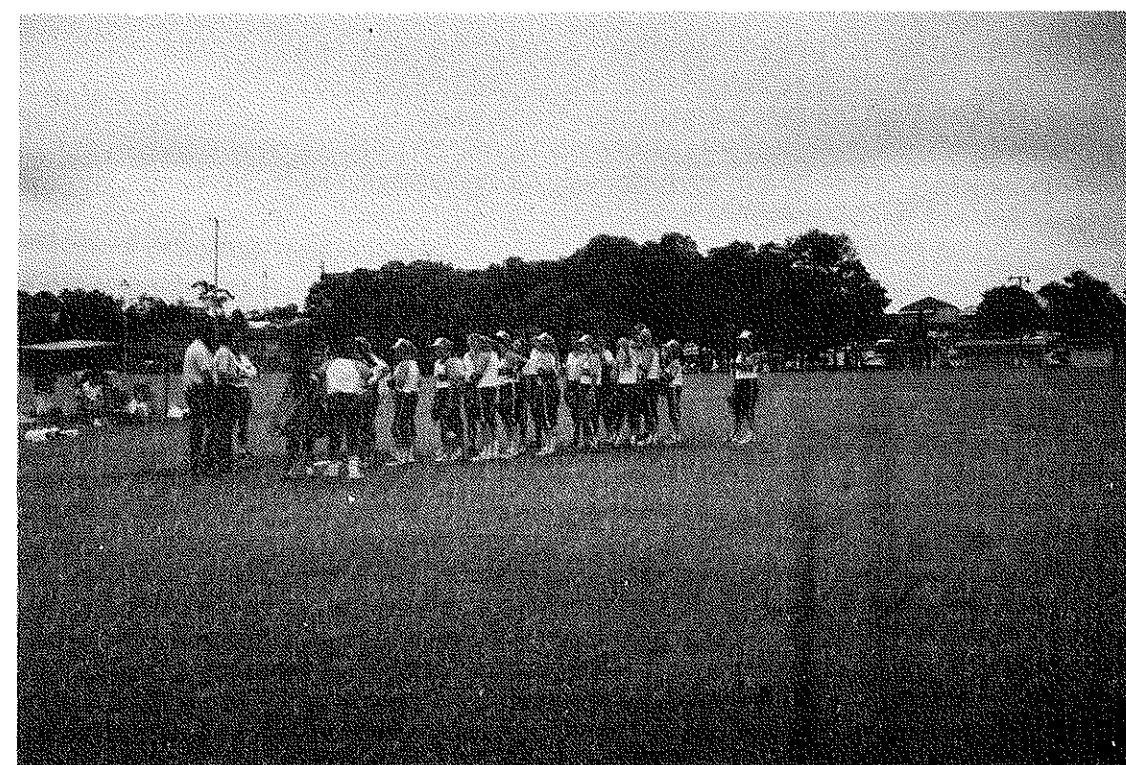
JENNY WILKINS & AMANDA CORNISH were our catchers for the season. Both of these girls are very good at what they do. I can also say they are two girls who bat extremely well and although they may not make base at times, should not worry too much because only time will help these fine players mature into future players at high club competition level.

NICKI LAMB - Shortstop - Nicki is what I would call a player of the future. Although I have only coached her this season she has shown great potential and willingness to tackle anything - mainly balls on the ground. Her on and off the field gimmicks have often had me in stitches.

JOANNE KOPP - Jo is a player I admire deeply. Her attitude and determination to try her hardest always shows in her game. Willing to learn everything she needs to know is a plus on its own.

NATASHA ROBINSON & STACEY LEIGH COLLINS - Outfielders - Both of these girls unfortunately did not have much ball handling this season but when did so both did their best. Both of these girls were Brisbane U14B Rep Players while Jenny was a 14A Brisbane player and captain. Nikkie, Amanda, Melissa, and I think Susan Fraser were all 14A Redlands Rep Players. Susan Oliphant was a primary school representative in the Championships. So you can see this is as team with great talent and I am glad to have known them. Best wishes and good luck in the future girls.

DEBBIE DEVINE & TRISH FOXWELL



UNDER 14B TEAM REPORT



Anne Morton(Scorer), Paula Warner(Coach) with Elizabeth, Kellie Brockman, Amber Evans, Rachael Engelmann, Andrea Martin (Manageress), Aileen Earle(Assistant Coach)

Trisha Robinson, Alexander, Lauren Crawford, Britt Martin, Natasha Gerhardt

Karen McCarthy, Jenny Butler, Natalie Martin

Absent: Niomi Pridham

AMBER - Catcher - Filled in this position for the first time with a few minor hic-ups. Our biggest foul ball hitter. Needs to do something with her hair. Possibly a perm?

BRITT - Outfield/1st Base - A good allrounder who proved to be a steadying on field influence on the team. Off the diamond she was as mad as a cut snake. Sponsored by Pony?

JENNY - Rightfield - Our most improved player who was pulled from the infield to eventually strengthen our outfield. Good switch hitter. Does this girl have enough accident insurance?

KAREN - Shortstop/2nd Base - As her trophy suggests, Karen has the best all round skills in the team and this coupled with her never say die attitude made her a joy to coach. Brisbane Rep U14d 1989. Whilst the pony tail is pleasant, we feel a little touch of colour could be added to brighten up the outfit?

KELLY - 3rd Base/Outfield - Fielding a new position this season and after a few initial problems Kelly settled in well. Her batting improved slowly throughout the season. Due to Kelly's tall slender statue, we feel a good hair cut could work wonders to round out her features. Perhaps a Bob?

NATASHA - Pitcher - At the time of this report Tash had 72 K2s to her credit. By far the most key player in the team. Has the ability to put bat to ball, though lacks the confidence. Brisbane North Rep 1989. Needs a bright lipstick to highlight her radiant smile?

NATALIE - 2nd Based/Shortstop - Would walk across burning coals, would swim shark infested waters, would climb ice capped mountains and still lay down a perfect bunt when asked. By far the most dedicated player. Perhaps she and Jenny could get a group discount on accident insurance?

NAOMI - 1st Base/Outfield - One of our most cosistent batters. Played 1st base early in the season and then became a capable outfielder. We are very PROUD of her, she's a real gem?

TRISH - Outfield - Trish had a couple of games as catcher but we found her skills more suited to the outfield. Has the ability to bat the ball well. Trish was disappointing this season, we never saw her with bow or ribbon in her hair once?

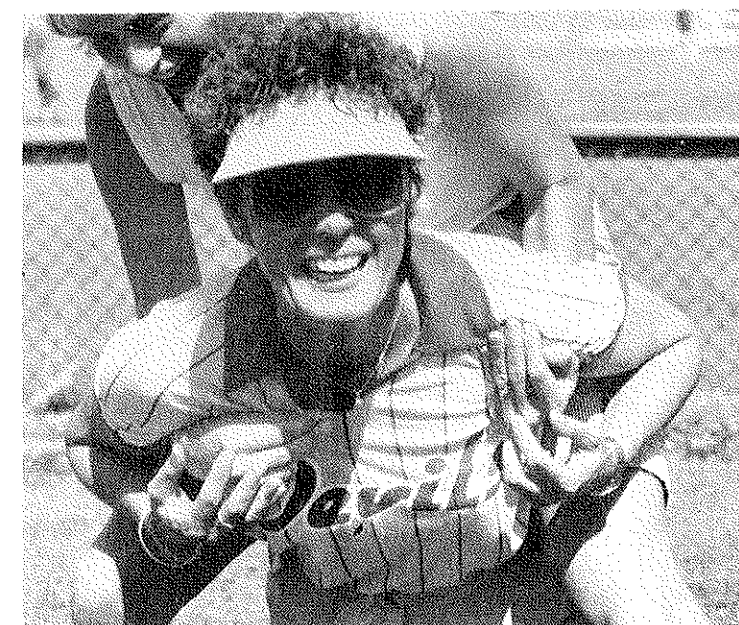
LAUREN - 3rd Base - We found her on a bench at the park. May be left over from Christmas. No one claimed her. So we took her in. Lauren our tips to you are simple - never drink cheap champagne, keep your water crackers crisp and your pate cool. Oh yes, by the way a dam fine player, a lot of fun and a real find for us.

RACHEL - Filled in for us a few times and found a spot in the team. A constant outfielder always backing up the odd wayward ball. Reliable with the stick. Suggest you wear fluoro ribbons with matching fluoro zinc for that look of the 90's.

Me and the Misses would like to thank all the players, parents, scorers and Andrea, our manageress for the season. Our sponsors Seaview, Great Western and a special thanks to all those little chickens who gave up their livers for a greater cause. We have had the best time. thanks also for the special attention our "A" Grade coach, and partner in crime - Gary.

See you all next season.

Me and the Misses
(Paula and Aileen)
or is it
Aileen and Paula



UNDER 14C TEAM REPORT



Judy Vernon(Scorer), Penny Downey, Catherine Hoey, Beth Agnew, Cassie Trewin, Allison Tooth, Peta Hudson, Melynda Paterson(Coach)

Christie Andrew, Bernadette Jagger, Melanie Ryan, Lara Coughlan, Melita Perry, Rachel Vernon

Absent: Jodi Fyfe, Michelle Vernon(Assistant Coach)

Well, what an interesting season this has been. With 13 players in the team we have had to juggle a lot of positions and we would just like to thank the girls and their parents for their patience.

Having a team mostly consisting of under 12 players we had quite a job ahead of us.

Our U12's - Christie, Lara, Penny, Jodi, Peta, Melita, Cassie and Rachel - thanks for playing up in 14s. To our U14's - Beth, Catherine, Bernadette, Melanie and Alison - thank you for being so understanding.

Once again we would like to thank the parents for their support each week. To Mrs. Perry, our manageress, and Mrs. Vernon our scorer, thanks heaps for everything, your help was appreciated. Thanks to Lara Hudson for helping at training and games when we needed you.

Thanks to everyone who helped throughout the season.

Thanks girls - coaching you has been quite an experience.

Melynda & Michelle

BETH AGNEW - during this season Beth had her ups and downs. She has improved immensely but sometimes forgets the basics. During the last few games she has started to shine through. With more work and perseverance Beth will be a strong player for any team.

BERNADETTE JAGGAR - Well what can we say!! Bernadette is the backbone of the team. She always gives 110% effort each week and is a pleasure to coach. Keep going Bernadette, you will go as far as you want. A great season - keep it up!!

MELITTA PERRY - Another one of our littlies. Melita has improved a lot this season. Always willing to try whatever is asked of her. Melita will go a long way when she learns to concentrate a bit more. Keep up the good work Melita, good luck in the future.

MELANIE RYAN - With this being her first season at softball, Melanie has improved in leaps and bounds. She is always smiling and is a pleasure to coach(?). Keep smiling - you'll go places!

ALISON TOOTH - Alison has had an up and down season with attitude being a problem. When you listen, Alison, and apply yourself you surprise everyone. Concentrate on the game and nothing will stop you. Good luck Spaghetti Arms (I had to say that)!!

CASSIE TREWIN - Our star catcher Cassie is another youngster in the team. Cassie's knowledge of the game has helped the others in the team. Her batting is consistent and she does all she is asked to do. With more intense competition Cassie will go a long way.

RACHEL VERNON - With Rachel stepping in as pitcher when we needed a backup she surprised us all and I think even herself. When she wasn't pitching Rachel plays any position asked of her. Keep up the good work kid!

HAYLEY CROOK - Shortstop - great throw - good catcher - strong, reliable batter - glove work needs attention.

ANDREA DEVERE - Outfield - hits the ball hard - throw needs some more work.

CORINA DEVINE - 3rd Base - catches and throws well - batting dropped a little towards the end of the season.

REBECCA FERGUSON "Shorty" or "Half" Game Rebecca - Outfield - tried hard all season.

ALISON GANNON - Pitcher - good catcher - throw needs some work - strong batter.

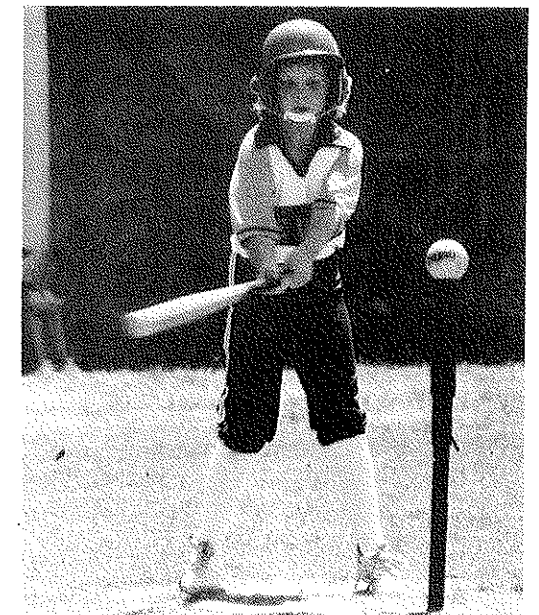
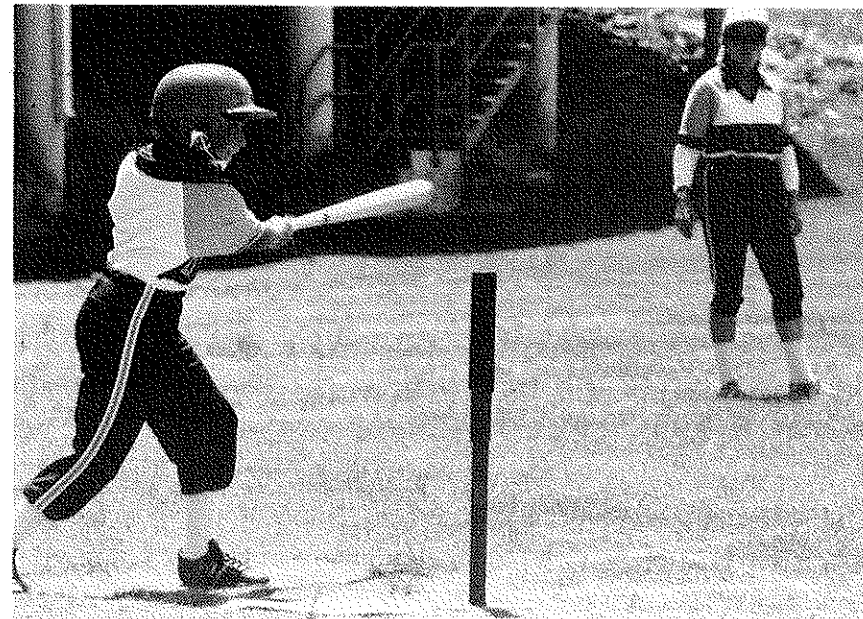
AMANDA KIERNAN - Outfield - improved during season - tried hard.

MELISSA McELROY - Outfield - improved during the season - tried hard.

SAMANTHA MILGATE - Infield - tends to rush her fielding a little - batting improved greatly - always listened.

REBECCA RUTTER - Outfield/2nd Base - good throw - hits the ball hard.

BOB & VICKI GANNON



This season has been a most successful one for the teeballers. At the time of writing this report they were on top of the ladder with several games still to play. The season started with lots of enthusiasm which continued throughout the season. Some of the team had a little experience while others had never played before. Batting improved greatly during the season with most players being able to hit the ball hard into the diamond. Most players were able to hit a home run at some stage during the year. Our fielding at times was excellent, with many double plays being executed. Towards the end of the season force outs at second and third were also being made.

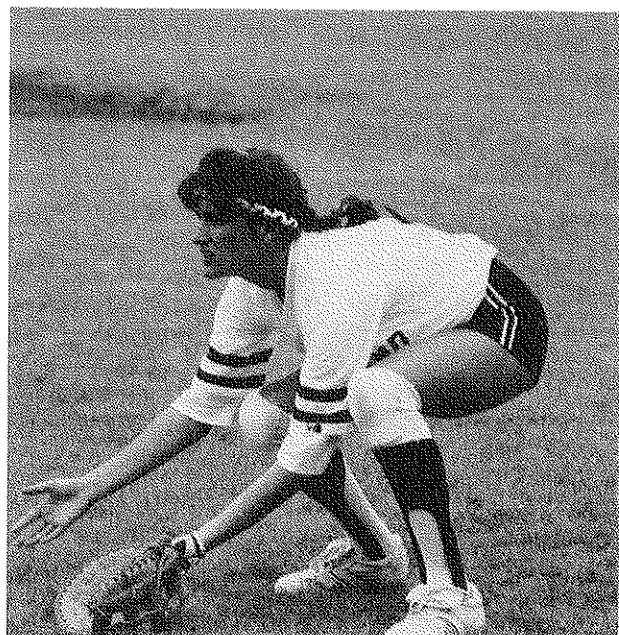
It has been a most enjoyable season and thanks must go to all the parents who supported the team, especially Karen Rutter, Sue Ferguson and Dallas Kiernan who helped with scoring and managing.

A special thank you goes to all the players for listening during training and trying so hard during all the games. You were great! Thanks also to Leanne Mountney and Allison Waters who took the girls when we were away one day. Sharon Mountney who helped another day. Gary Ogg who popped over quite often and many other loyal supporters who came to cheer us on during some important games.

CARLY CRAWFORD - 1st Base - made some good outs from not so good throws - good batter.

KELLIE CRAWFORD - Outfield - newcomer - has developed into a sound player.

PLAYER OF THE SEASON



Leanne has been a Devils player since the Premiership winning 14As in 84/85. She has represented Brisbane for six years now and was a part of the Queensland Schoolgirls squad for two of those.

During her two years with the State Under 16 team, she displayed the qualities necessary to be named Co-captain and then progressed to the State Under 19 Team where, this year, she was honoured by being named Captain. These teams she has been a part of have come home with not less than 3 out of the 4 Championships.

At only 18 years of age, she has played A1 for Devils for 3 years and, to her favourite coach, Gary Ogg, she has become an invaluable member of his squad.

Congratulations **LEANNE MOUNTNEY**.

Well done!

PLAYER OF THE FUTURE



A 1986 Brisbane North Primary Schoolgirls Representative, she was encouraged by 1988 Player of the Future, Elizabeth Buckley, to join Devils, where she helped pitch the team to the 1986/87 Premiership in Under 14Bs followed the next year by Under 14A honours.

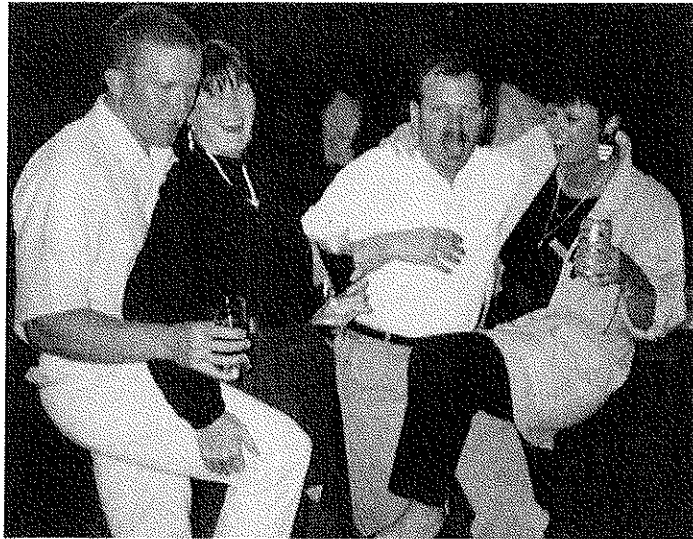
She has repped Brisbane since 1987 where her talent has shown. A big jump to A3 for '88 saw her a little unsteady but all the better for the increased level of competition.

This year has seen her play in both A2 and A1, with Brisbane in the Under 16s and the State Under 16 side.

Her game has gone ahead in leaps and bounds and we wish her well for the future.

KATHY SMALLCOMBE.

SENIOR CLUB GIRL



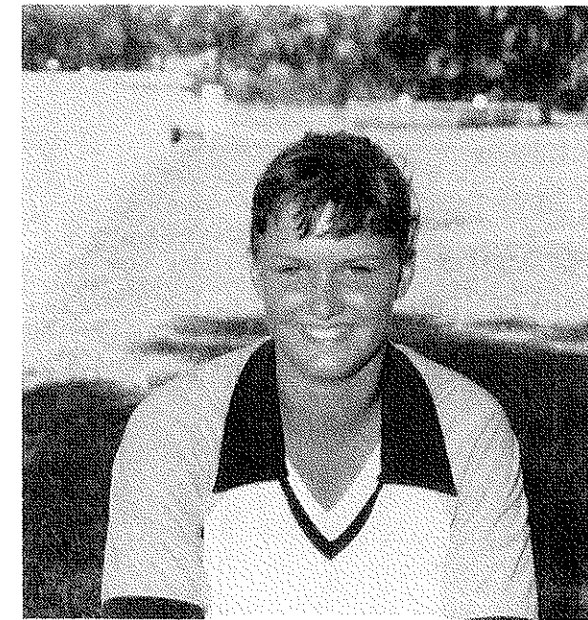
A second time round winner - 1987/88 de ja vu.

This woman almost singlehandedly ran the Devils Mens Season (with the help of husband, Jeff), had a baby (also ditto), looked after our finances for the second year in a row, scored for a Junior Team on Saturday mornings and extra Senior Teams in the afternoon when not playing herself in B2, was happy for any extra games going in B1, then rejoined the workforce AND kept up her commitments.

This year she IS seeking help with the running of the Mens and so she should! You are not Superwoman - just Devils' Senior Club Girl.

Thanks **ANNE MORTON.**

JUNIOR CLUB GIRL



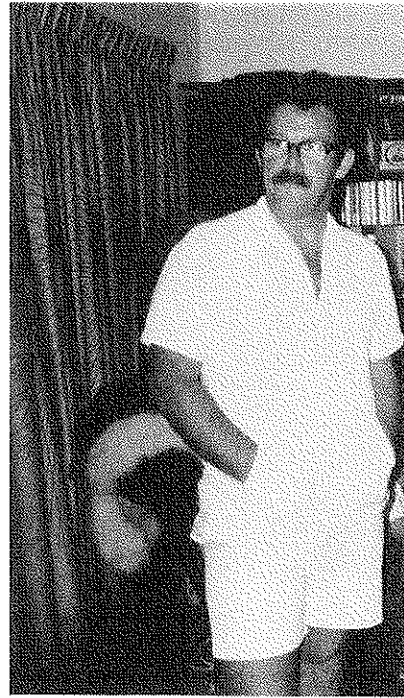
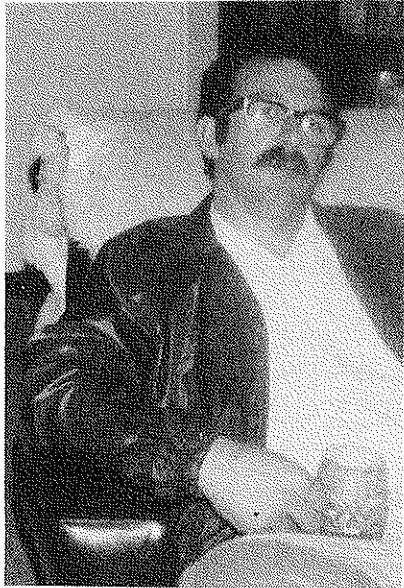
If you want something done around the Park, just ask Michelle Vernon. She has helped on canteen, sat on the bench for grades right up to A1 and assistant coached her own team.

The Under 14C girls will tell you she has successfully translated her three years of representative softball to her charges. All this as well as playing herself and finding the extra time that rep. training takes.

Always keen to help in any way, selling raffle tickets, going to Discos and the like, our Junior Club Girl 1989/90

MICHELLE VERNON

CLUB PERSON OF THE YEAR



This is the third year our Club Person could feasibly have won this trophy. He is always out at the Park from dawn to dusk helping to run the Club. In the past two years he was helping wife Di, but this year he went solo!

Far from being the Solo man, he can always be found encouraging Devils players, umpiring on games to avert fines or loss of points, or just driving all over town for uniforms, equipment or stationery needs.

If there's one thing you are, Craig, it's keen - and keenly Devils.

CRAIG PATERSON.

SENIOR TEAM OF THE YEAR

B3 TEAM

The B3's started off the season with a few hiccups but the addition of Steve Roberts as Coach combined with the hard work of Faye Fraser and Phyl Hurford in marshalling the team together have finally paid off.

Your twelve players put together a team batting average of .421 and fielded .876 to set you well on the way to your Premiership win on Saturday, 10th March, 1990.

It's also given you the extra push necessary to make you Devil's Senior Team of the Year

JUNIOR TEAM OF THE YEAR

T BALL TEAM

The T Ballers. What a keen little bunch of juniors, this lot are. With 11 players in the team this season, they have shown a clean pair of heels to their opposition all season.

With a first past the post effort - no finals - to win the Premiership, these girls batted and fielded their way to victory for 1989/90 last Saturday.

Well done girls, you're our Junior Team of the Year

HOME RUN BAT

DONNA McDONALD

Congratulations, Donna McDonald - a total of seven home runs hit for the season with the all important bonus of 19 R.B.I's. A member of our Premiership winning B3 Team, Donna has taken the amalgamation in her stride and her softball has gone from strength to strength.

Nice work, Slugger!

1989/90 WINNERS

PLAYER OF THE SEASON. (Donated by Mr. & Mrs. Webb.)

1979	DIANE LOWRY.	1980	CAROLINE GRICE.
1981	JOYCE LESTER.	1982	PATRICE WEBB.
1983	SUE KNIGHT.	1984	LEIGH GLEADHILL.
1985	KRISSY DICKMAN.	1986	MARIE GOYDER.
1987	STEPHANIE GILL.	1988	SHELLEY PAYNE.
1989	STEPHANIE GILL.	1990	LEANNE MOUNTNEY.

PLAYER OF THE FUTURE. (Donated by Mr. Rooney.)

1977	HEATHER SYMINGTON.	1978	CAROLINE GRICE.
1979	PATRICE WEBB.	1980	MELINDA SHORTON.
1981	KAREN MOORE.	1982	TONI SMITH.
1983	SHARON CUNNINGTON.	1984	ALLISON TALBOT.
1985	SHELLEY PAYNE.	1986	CARRIE MCCARTHY.
1987	LEANNE MOUNTNEY.	1988	ELIZABETH BUCKLEY.
1989	ALLISON WATERS.	1990	KATHY SMALLCOMBE.

JUNIOR CLUB GIRL. (Donated by Mrs. Clark.)

1979	JENNY CLARK.	1980	KATRINA WEBB.
1981	SHARON CUNNINGTON.	1982	JODDIE GADDES.
1983	LEIGH MCCARTHY.	1984	LAUREN GADDES.
1985	CARRIE MCCARTHY.	1986	LEANNE MOUNTNEY.
1987	JANET HILL.	1988	TRACEY GILLINDER.
1989	MELYNDA PATERSON.	1990	MICHELLE VERNON.

SENIOR CLUB GIRL. (Donated by Mrs. Tegner.)

1979	PATTI WALKER.	1980	DEBBIE MCCOLM.
1981	JOANNE GREENWOOD.	1982	LESLEIGH GUMM.
1983	SANDRA SALE.	1984	SANDRA FORD.
1985	SYLVIA VAN DER VALK	1986	JANETTE SMITH.
1987	SHARON MOUNTNEY.	1988	ANNE MORTON.
1989	TRACEY WYATT.	1990	ANNE MORTON.

CLUB PERSON OF THE YEAR. (Presented by Goldwings Softball Club.)

1982	ROBYN GADDES.	1983	MARILYN GUMM.
1984	DUDLEY GALE.	1985	KEN GADDES SNR.
1986	BARRY GLEADHILL.	1987	PAULA WARNER.
1988	ROBYN GILLINDER.	1989	BRIAN MOUNTNEY.
1990	CRAIG PATERSON.		

SENIOR TEAM OF THE YEAR. (Presented by Goldwings Softball Club.)

1990 B3.

JUNIOR TEAM OF THE YEAR. (Presented by Goldwings Softball Club.)

1990 T-BALL.

MOST HOME RUNS BAT. (Donated by Mr. Geoff Weller.)

1990 DONNA McDONALD.

1989/90 TROPHY WINNERS

17TH MARCH, 1990

A1.

MOST VALUABLE PLAYER.....LEANNE MOUNTNEY.

MOST VALUABLE OFFENSIVE PLAYER.....TRACEY BLANCH.

MOST VALUABLE DEFENSIVE PLAYER.....TINA CORBETT.

A2.

BEST OFFENSIVE PLAYER.....KATHY ROSENBERG.

BEST DEFENSIVE PLAYER.....KATHY SMALLCOMBE.

MOST VALUABLE PLAYER.....RUTH ARMITAGE.

A3.

MOST VALUABLE PLAYER.....RACHAEL LEE.

MOST CONSISTENT PLAYER.....TAMMIE DARE.

COACH'S AWARD.....PAULA WARNER.

B1.

MOST CONSISTENT PLAYER.....KERRI-ANN FOXWELL.

BEST FIELDING PLAYER.....VICKI GANNON.

BEST BATTER.....DEBBIE DEVINE.

B2.

MOST IMPROVED PLAYER.....GAYNOR GILLAM.

MOST RELIABLE PLAYER.....DEBBIE TREWIN.

MOST VALUABLE PLAYER.....BRONWYN MILLER.

B3.

MOST IMPROVED PLAYER.....TERRI McDONALD.

MOST VALUABLE PLAYER.....SHEILA GRALTON.

ENCOURAGEMENT AWARD.....LEANNE LENNOX.

C1.

BEST BATTING AVERAGE.....LARISSA WILLS.

BEST FIELDING AVERAGE.....BERNADEE COLLINS.

BEST ALLROUND AVERAGE.....DIANE PATERSON.

16A.

MOST VALUABLE PLAYER.....ANGELA GARDEN.

UTILITY/TEAM PLAYER.....KYM HUDDART.

COACH'S TROPHY.....MICHELLE VERNON.

16B.

MOST CONSISTENT PLAYER.....AMANDA FYFE.

BEST TEAM PLAYER.....ROCHELLE MAUNDER.

MOST IMPROVED PLAYER.....TAMARA BIRD.

14A.

MOST CONSISTENT PLAYER.....SUSAN FRASER.

BEST BATTING AVERAGE.....NICKI LAMB.

MOST VALUABLE PLAYER.....SUSAN OLIPHANT.

14B.

MOST VALUABLE PLAYER.....NATASHA ROBINSON.

MOST DEDICATED PLAYER.....NATALIE MARTIN.

BEST TEAM PLAYER.....KAREN MCCARTHY.

14C.

MOST CONSISTENT PLAYER.....PETA HUDSON.

MOST IMPROVED PLAYER.....MELANIE RYAN.

BEST TEAM PLAYER.....BERNADETTE JAGGER.

