

**GO SOFTBALL**



11th  
ANNUAL MAGAZINE  
1988 – 1989

**GO DEVILS**

## PRESIDENT'S REPORT

Approximately twelve months ago, along with my wife, and out of curiosity, I attended Devils' Annual General Meeting. Somehow during the meeting, through I guess Devils' desperation, I ended up in the position of President. I thought at the time that any club as desperate as that had to be in some sort of trouble - but that was certainly not the case. During the following twelve months, I had the pleasure of working and playing with a great group of people who have only the very best interests of Devils Softball Club at heart. Over the years I had served on many different sporting club committees but it was wonderful to work with such an harmonious group as Devils Management Committee. My personal thanks to all the members of the committee for your hard work and perserverance.

This year has been a mixed one for Devils. Shortly before the season was due to start, our A1 side looked rather shaky but, thanks to the hard endeavours of several committee members, we were able to field a very competitive team under club coach, Gary Ogg. After a very long day and night season, and the absence of quite a few players on representative duties, the A1 side just missed out on playing in the finals.

In all the club fielded 11 teams during the season, 7 of these teams qualifying for the finals. A great effort - Congratulations girls!

Once again Devils ran a highly successful club carnival at Kedron. A large number of teams participated and a great day was had by all. We are hoping to expand the carnival this year and make it even bigger and better. Heaps of thanks to carnival organiser extraordinaire, Robyn Gillinder, for her untiring efforts.

Our Christmas Party held at the Chermside Pool was a little disappointing this season due to lack of patronage but Santa and all who did attend had a terrific evening.

The club's other big undertaking for the season - the Lismore Trip, was unfortunately cancelled because of wet weather; a big disappointment for all, but there's always next year when Brian will return with THE folder.

Devils Softball Club offers thanks to -

All coaches, managers and scorers without whom the club would not function,

Diane Paterson, our hard working secretary, and her chief offsider, Craig,

Treasurer, Anne Morton,

All members of the Management Committee for your efforts in keeping the club afloat,

Our B.S.A. delegate, Brian Mountney, for his diligence and perserverance,

All Devils players for your support, and efforts during the season,

All parents of players for your continued interest and support,

Tom Murphy for his B.B.Q. prowess,

Kedron Australian Rules Football Club for the use of their grounds and facilities.

TO anyone overlooked above, please accept the club's thanks.



Congratulations to all Devils players who achieved representative honours during the season.

Devils is a great club. I'm sure you have all experienced the happiness, friendliness and team spirit that is evident from the Management Committee right down through the grades. 1989 looms as an even more exciting year for the club - be a part of it - support the club in all its endeavours. Your first big chance to do so is to attend the Annual General Meeting. Let's make it a record roll-up. You won't be seconded unless you are willing but your presence will benefit you and your club.

I have thoroughly enjoyed this year as your President and I look forward to seeing you all back again next season.

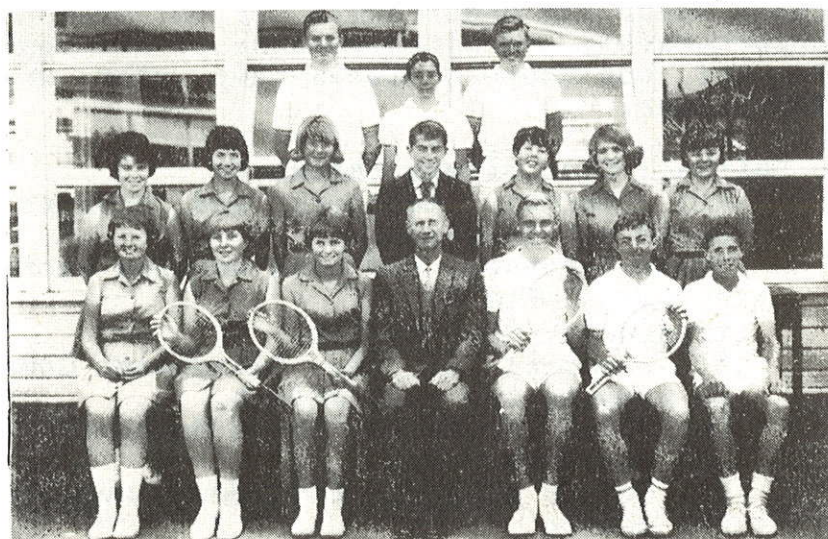
Bob Gannon.



Supporters at Lunch  
near Diamond Ten.

An Hysterical Photo  
for the Album

Pick the Familiar Face  
CLUE:  
Just OGgle the Back Row!



Mrs. Fay Fraser of Birkdale, Queensland, was able to pick the face  
AND she supplied the snapshot. Thanks, Fay!

## Club History

- 1971: Devils Softball Club was founded by Sandra Gaddes and Elaine Robinson. The first ever match played on 2nd October against Vikings and won by Devils 12 - 1. There were only 13 members in that year and the team made it to the Grand Final, but were defeated by Rebels by one run.
- 1972: There were four Devils teams; the A3 team winning the Premiership and one being Runners-Up in the Grand Final.
- 1973: This year we fielded 5 teams. The first nightball started at Hawthorne Park but no records were kept of that year's results.
- 1974: This year we had 7 teams with 47 Seniors and 36 Junior Players. One of our junior teams took out the Premiership.
- 1975: Devils fielded 7 teams again, T-Ball being entered for the first time with our girls taking out the premiership. We also sent our first team to Kumbia winning the Senior Trophy. Ros Culpitt had played 100 'A' Grade games.
- 1976: The games were moved to Perry Park this year. We had a change of name to 'REDLEGS' in the night competition and the team were the premiers of that competition. Devils took 3 teams up to Kumbia and won all three divisions. Sandra Ford(Gaddes), Joyce and Leigh Lester all played 100 'A' Grade games.
- 1977: Devils now had 5 Senior and 5 Junior teams, with T-Ball and 12A teams winning their Premierships. Diane Lowry played her 100th 'A' Grade game.
- 1978: We had 5 Senior and 6 Junior teams this year, with 5 in the Grand Finals and 2 being Grand Final winners. Wendy Fallis reached her 100th game. Southside Nightball Promotional Softball tournament started at Langlands Park with our team called 'RED DEVILS' winning the Grand Final. Our Redlegs team at Perry Park were Runners-up.
- 1979: This year Devils had 4 Junior and 7 Senior teams with 3 teams making the Grand Finals, 2 of which were Premiers. Our Redlegs were Grandfinalists. Patti Walker reached her 100 'A' Grade game, and Sylvia Van Der Valk played 100 Club games.
- 1980: We had 9 Senior and 4 Junior teams this year. Devils won the Brisbane Club Championship Trophy for the first time, with 10 teams making semi-finals, 2 of them undefeated. Nightball moved from Perry Park to the QSH Diamond at Downey Park. Our Southside team 'RED DEVILS' won the Premiership again. 200th 'A' Grade games played by Joyce Lester and Diane Lowry; Debbie McColm reached 100 'A' Grade games.
- 1981: Devils fielded 13 teams again this year, taking out the Club Championship again in Brisbane Day Softball Competition. 7 teams made the Grand Finals with 2 Junior teams becoming the Premiers. We sent 3 teams to Kumbia again and again took off the Club Championship, the A Grade and Under 16 Finals.
- 1982: We fielded 13 teams and 6 made the finals. We lost our Coaching Director and most of our A Grade players to other clubs. Devils sent teams to Kumbia and Redcliffe carnivals retaining the Kumbia Trophy. Pauline Harvey-Short, Kerry Pollock and Sue Gamble made their 100 A Grade games this year. A sad moment for the Club with the loss of our Patron, Bill Teqner, who is missed by all Devils. The Nightball teams fared well with the Under 17 team taking off the Premiership.



- 1983: The Club still a bit shaky with the loss of a lot of senior players managed to win only 3 Grand Finals. We had 13 Dayball teams and 3 Nightball teams this year. The A grade fielding Elaine Davies, a Canadian Pitcher. Sandra Ford played her 200 A Grade game this season. We fared well, winning all Junior Finals in the Rebels, Kumbia and Toowoomba Carnivals.
- 1984: Devils fielded 13 teams this year with 4 Junior teams becoming Premiers and T-Ball being Runners-Up. The Reserve Grade Nightball taking out the only senior Premiership. We attended Kumbia and Rebels Carnivals coming away with the Under 14 Trophy from Rebels. We entered a team in the Mixed Competition held in off-season at Redlands and reached the preliminary finals. This year saw the introduction of the new uniform into the Club in Nightball with a promise to the Seniors to wear it in the Dayball Competition in 1985/86.
- 1985: The Club fielded 12 Dayball and 2 Nightball Teams with 4 teams winning Premierships and 2 teams as Runners-Up. Bob Payne organised a team in the South Brisbane Winterball Competition and won the Premiership. Debbie Mc Colm played her 200th game in 1984 with her 250th 'A' Grade game this year.
- 1986: The Club fielded 13 Day and 2 Night teams with Premiers going to 16A, 14B and T-Ball; U16B and U14A being Runners-Up. We entered a team in the National Club Championships in Brisbane and performed consistently well. Bob Payne and Chris Welsh fielded a team in the South Brisbane Competition and came away winners for the second successive year. Craig Sinclair was the driving force for Devils to enter the Men's Competition at Bannister Park, where our A grade team were Runners-Up and two members of that team were announced in Brisbane A with three in Brisbane B Representative Teams. Craig and Steve Armitage were subsequently named in the Queensland Squad. Our Club was finally asked to field a team for the Medibank Series and finished a creditable fourth.
- 1987: This year was a mixed bag for the Club as a whole. The Men again competed at Bannister Park with a social team entering in the fun at B2 level. Our A Grade was again Runners-Up with the B2's just missing out on the final four. Our Carnival was again held in late September with a goodly profit being obtained to start the season. Medibank Nightball saw our participation at A Grade level, but the girls did not fare as well this year. Under 17's and below enjoyed a trip to Lismore in early February with all teams doing extremely well. We saw a drop in the number of players with our Club and only fielded 11 teams with A1, B1, both U16's and all the U14's making the semis. Six teams made the Grand Finals with 4 Premiers and 2 Runners-Up. The Under 12A's were First Round Leaders and finally Runners-Up.

THE A  
GRADE



SOCIALLY SIPPING  
END OF SEASON  
1988/89.

1988: The men provided teams in A,B and C Grades. This year's Men's competition attracted such large numbers that diamonds were provided at Holloway Field, Newmarket, as well as Bannister Park, which resulted in a fair amount of confusion (at times) and a lot of extra umpiring duties. The B and C teams performed well though not making the finals. Having only lost 4 games in 3 seasons, our A Grade proved consistent in maintaining their Runners-Up place for the third season in a row. Our Carnival was held in September and proved profitable yet again. A Minor Art Union held through October/November - the brainchild of Brian Mountney and Tom Murphy (with Lorraine Murphy doing a major part of the work) - provided more funds for the soon-to-be-depleted coffers. Batting helmets were made compulsory for this season and at \$30 a pop for our 11 teams proved costly. The annual Medibank Competition proved a slight hiccup as nearly half our A Grade were Redlands players on permit. The girls whocompeted did a commendable job for their Club, but were soon eliminated. The Lismore Trip was a non-event with consistent rain in that area from December onwards nullifying Brian's efforts to invade their township with the help of teams from Jags and Logan City. Our State Reps. credited themselves well with Tina Corbett returning from Canberra's Australian Under 19 Championships as "Pitcher of the Series". Sue Nesbitt joined Gary Ogg as Assistant Coach to our A Grade. The club fielded 11 teams with 5 out of 9 in the Finals, two as Minor Premiers, two being Runners-Up and, in the Under 12 Division where there are no finals, the 12A and B teams were Runners-Up and First Round Leaders respectively.

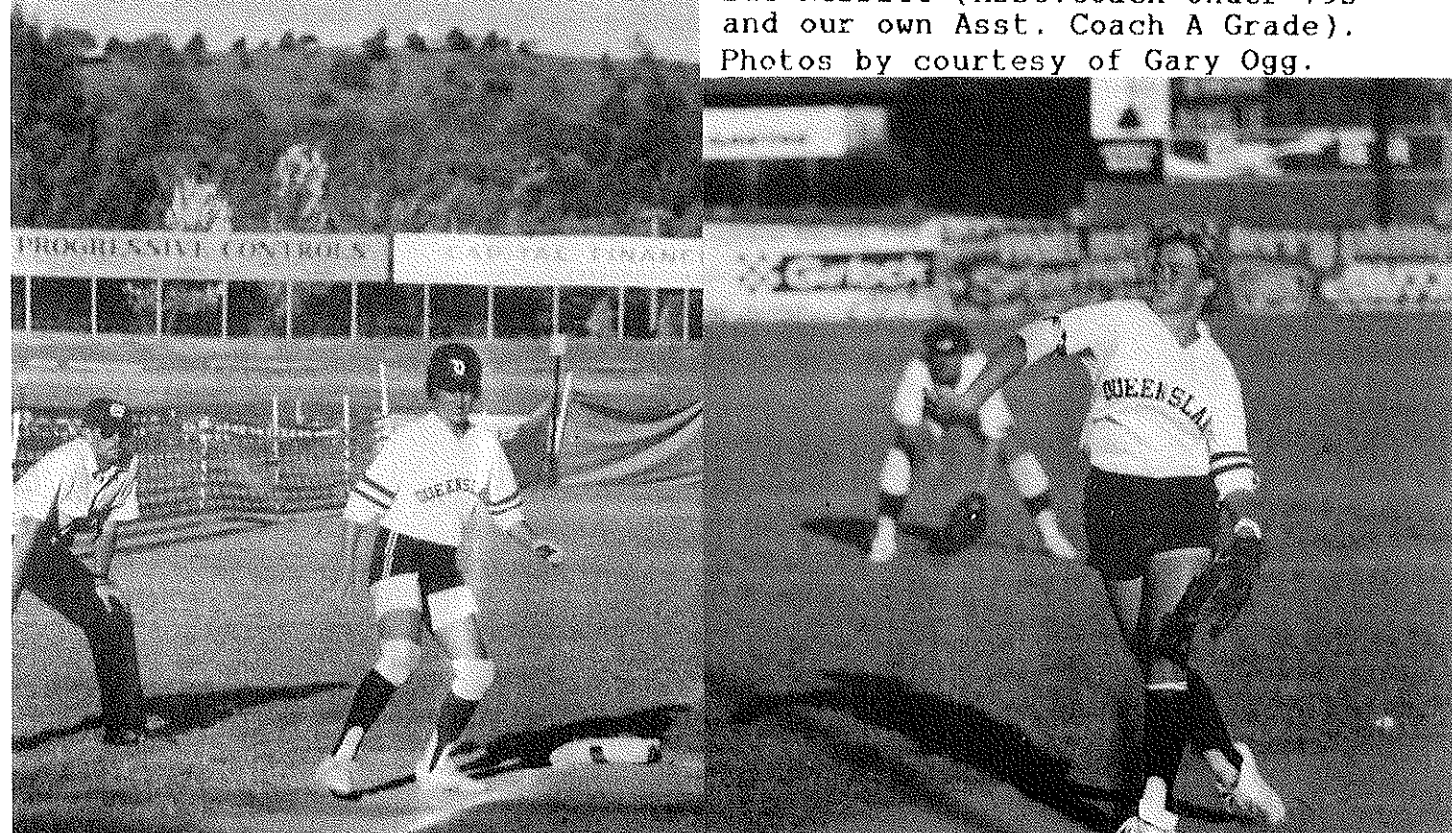
## Devils Softball Club

### TEAM OFFICIALS - 1988/89

TEAM	COACH	MANAGER/ESS
A1	GARY OGG/SUE NESBITT	LYN MELLISH
A2	SHELLEY PAYNE/CHRIS WELSH	MRS. MARTOO
A3	BOB GANNON/ROY WYATT	GRAHAM SMALLCOMBE
B1	BOB PAYNE/BRIAN LACEY	VICKI GANNON
B2	SHEILA GRALTON/KEITH MOORE	MRS. WALDON
U16A	SHARON MOUNTNEY/DAWN BILLSBOROUGH	ELAINE GRIFFITHS
U16B	JEFF MORTON/DONNA PENNEY	LEE BURLEY
U14A	GARY OGG	RON CLANCY
U14B	SUSAN JOHNSON/ALLISON WATERS	FAY FRASER
U12A	AILEEN EARLE/TRACEY WYATT	ANDREA MARTIN
U12B	TRACEY GILLINDER/SUSAN PAYNE	ROSEMARY BUTLER



CLOCKWISE - Tracie Blanch, Leanne Mountney, Tina Corbett, Leanne again, Sue Nesbitt (Asst.Coach Under 19s and our own Asst. Coach A Grade). Photos by courtesy of Gary Ogg.



## REPRESENTATIVE HONOURS 1988/89

- BRISBANE UNDER 14 - Paula Ovenden, Jenny Wilkins, Rowena Clancy, Kym Huddart  
Michelle Vernon, Tammie Dare
- UNDER 16 - Georgina Kerr, Kathy Smallcombe, Melanie Wilson,  
Alison Kelly, Narelle Sharrock, Allison Waters
- SENIORS - Stephanie Gill, Leanne Mountney, Selina Raiteri
- QUEENSLAND UNDER 16 - Allison Water, Narelle Sharrock
- UNDER 19 - Leanne Mountney, Tina Corbett, Tracie Blanch
- SENIORS - Jo Hopkins-Lamb

### PREVIOUS AUSTRALIAN REPRESENTATIVES -

Elaine Robinson, Sandra Ford, Pauline Harvey-Short,  
Joyce Lester, Maria Kosenko

### PREVIOUS QUEENSLAND REPRESENTATIVES -

#### JUNIORS

Wendy Fallis, Joyce Lester, Leigh Lester, Deb. McColm,  
Diane Lowry, Sue Perry, Pauline Harvey-Short, Karen  
Moore, Caroline Grice, Patrice Webb, Jenny Clark,  
Sharon and Lynda Cunningham, Kerryn Harry, Linda Laukirbe  
Allison Talbot, Emily Kerekes, Leigh MacCarthy, Shelley  
Payne, Leanne Mountney,

#### SENIORS

Alison Dawson, Wendy Fallis, Sandra Ford, Joyce Lester,  
Deborah McColm, Leigh Lester, Diane Lowry, Tina Kelly,  
Pauline Harvey-Short, Elaine Robinson, Maryann Walsh,  
Allison Talbot, Marie Machen(Goyder), Maria Kosenko,  
Stephanie Gill, Shelley Payne, Kerryn Harry, Selina  
Raiteri, Jo Hopkins-Lamb

### 250 'A' GRADE CLUB GAMES RECORD

Deborah McColm	05/04/86	against Saints
----------------	----------	----------------

### 200 'A' GRADE CLUB GAMES RECORD

Joyce Lester	17/10/80	against Redsox
Diane Lowry	12/12/80	against Redsox
Sandra Ford	26/11/83	against Redsox
Deborah McColm	27/10/84	against Saints

### 100 'A' GRADE CLUB GAMES RECORD

Rosslyn Culpitt	08/11/75	against Rebels
Joyce Lester	06/11/76	against Rebels
Leigh Lester	06/11/76	against Rebels
Sandra Ford	27/11/76	against Rebels
Diane Lowry	15/10/77	against Redsox
Wendy Fallis	28/01/79	against Toowoomba
Patti Walker	17/11/79	against Rebels
Deborah McColm	26/09/80	against Panthers
Pauline Harvey-Short	17/09/82	against Redsox
Sue Perry	20/10/82	against Jaguars
Kerry Pollock	17/11/82	against Panthers
Stephanie Gill	04/02/89	against Saints



## DEVILS CARNIVAL DAY

Devils Carnival nominations rewrote the Record Book as 36 teams in Grades from Under 12 to A Grade competed on the day. Including the Under 12 in the scheme of things proved to be more trouble than enough but the three teams who played on the day took all the time and umpiring changes in their stride.

A last minute withdrawal from Toowoomba's A Grade saw more hair-tearing from the noticeably ageing Convenor and much shuffling with the remaining five teams to achieve a result at the end of the day. Thanks to those teams for their patience.

To help things go more smoothly on the day, Queensland decided to hold an Umpiring Seminar on OUR week-end. This resulted in a record number of phone calls to achieve the number of Umpires necessary to run the 10 diamonds throughout the day. My thanks to those people who I seemed to have plucked from the woodwork, who gave of their services on the day. Without Umpires the day could not go ahead.

Again our line-markers, tent pitchers and roll butterers were there from Brian's Dawn Salute and worked well for the benefit of ALL club members ALL day. Thanks people!

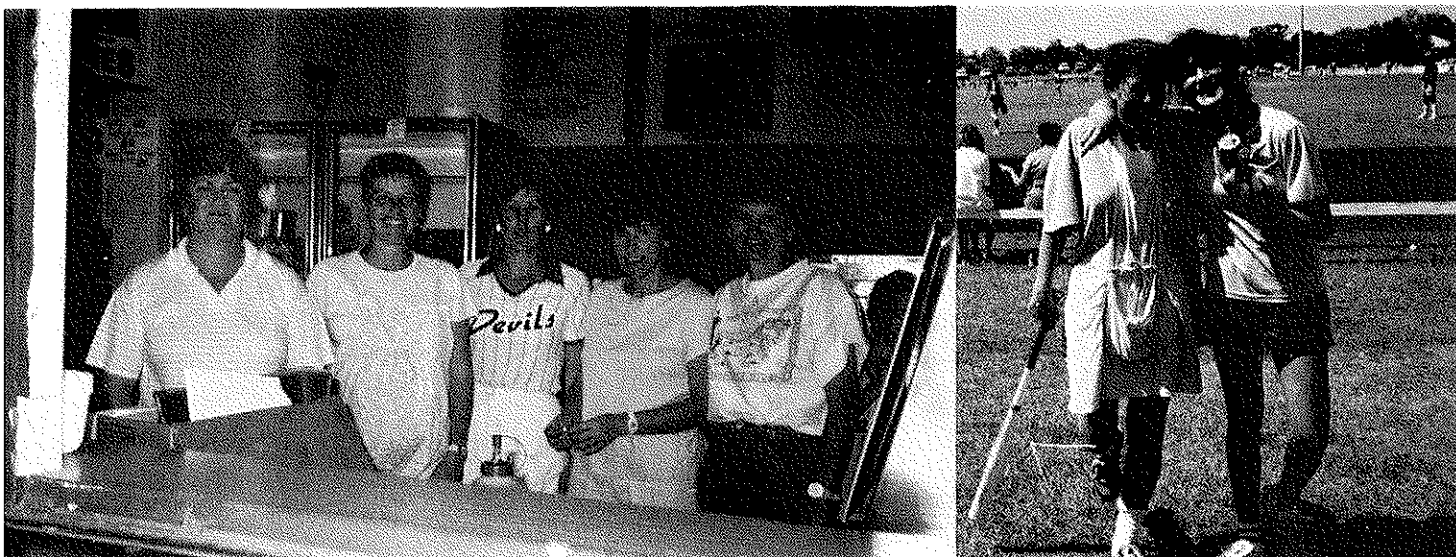
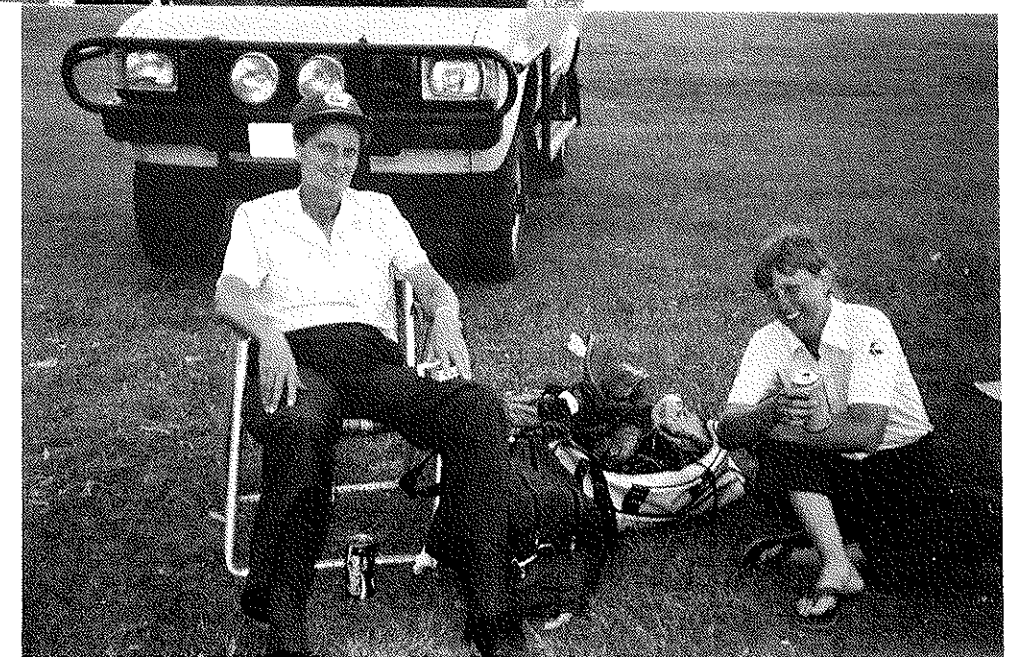
Thanks again to Whoever's Up There for the lovely weather - an item of chief concern to the Writer each year.

Rob.

## DEVILS ON TOUR

Whoever's Up There got this one completely WRONG unfortunately for the many people awaiting the 4th February and for Ron, a survivor of the 16A sleepover (pictures of which are an E. & O.E. on his part).

Next year I'm told it's back to the Green Folder and basics. Brian, you KNOW what red means!!



## A GRADE MENS REPORT

### *'Runners-Up'*

On paper this side was the best line up in Brisbane, possibly Queensland.

The team consisted of Buck Sinclair, David Foxover, Larry Welsh, Craig Sinclair, Tony Whittred, Mark Katene, Trevor Guy, Bill Smithson, Chris Welsh, Dave Hodel, Andrew (Chook) Kell,

Coach: Tony Whittred  
Manager: Bill Huston  
Scorer: Ngaire Huston.

As the standard of the A Grade competition has improved the big wins of the previous years were not in evidence. This team of perpetual minor premiers won 13 games, lost 1 and drew 1. The team spirit was very good, with the guys playing as a team not as individuals.

The Grand Final, which by the way we lost for the third year running, was one of the most nail biting games ever to be seen in Brisbane. This time we lost it, we weren't coming from behind. Maybe this year we'll hang on to it. The first innings saw us 3 nil up with excellent three base hits from both Welsh brothers; we scored again in the third with a safe drive from David Foxover.

Two walks in the third and a single from Wolves "grey haired gentleman" saw the score at 4 to 2. Another walk in Wolves' fifth innings made it 4 to 3. Another 3 base hit by Chris Welsh followed by a single from Trev. Guy. Three safe hits by Wolves in the 7th saw us all tied up.

Two safe hits in the 8th; we couldn't capitalise as David Foxover was taken out at home.

The Sinclair brothers did it for us in the 9th with Buck's 2 base hit bringing Craig home.

Into the bottom of the ninth with two down; two strikes on the number nine batter, who hadn't hit the ball all day and off it went clean over centrefield's head. Bernie Machen became a hero and Devils were runners up three years in a row.

The team's top batter was Larry Welsh, Top Fielder Bill Smithson with Chris Welsh, Player of the Finals.

The only member to nominate for the Brisbane team for the State Championships was Andrew Kell who was selected and subsequently withdrew.

Ngaire Huston was selected as Scorer for the Brisbane team for the Brisbane A team for the State Championships and also the Queensland Mens Open team for the Australian Championships in Sydney during March.

A special thanks to Chris Bown and Roy Wyatt who were always willingly available when called on to fill the gaps.

I hope that all the guys will return this season to see Devils Mens A team rightfully take out the Grand Final.

## B GRADE MENS REPORT

Once again Devils participated in the Men's Softball Competition fielding three teams. We had the rather dubious honour of coping, I mean coaching, the B Grade boys, which was an experience to say the least.

Our pitcher/catcher combo of youth, Hamish, and experience, Roy, worked really well. Hamish being a Kiwi (need I say more) had the ability to fire the ball over the plate. Mind you, Chris, our other pitcher (also a kiwi) did a lot of damage with the ball, mainly into backs, hands, etc (good work, Chris). Roy handled catching again admirably and was regularly called to play or bench for the A Grade.

One of our youngest players, Bob Gannon ??? did well at first base showing us some of his agility on occasions and, for those interested in knowing how we got Bob to run that little bit faster round those bases, we just whacked him in ahead of Chris in the batting line up. Old Boom Boom managed to knock up his full share of home runs again this season, and made the "big fella" run. Chris played shortstop and did an admirable job with the usual speccie outs.

Clem and Lloyd, our other two infielders, the "almost deaf" third base and the philosophical second base, both fielded and batted well with Lloyd noticeably improving.

The Outfield comprised a cop, a kiwi (yes folks, another one!), a carouser and a carrot top.

Peter (did you see my rum) and Michael (did you see that catch) worked as hard in the bar as the game, with Michael diving in for some whazzy slides and Peter pulling a few uncatchable balls out of the air - normally after night duty and no sleep.

Allen was more of a utility player having safe hands at both rightfield and first base. He had a comfortable season with the bat and, after a season of yelling at the umpires, Allen has now decided to join the ranks of abused blues. David had his first season with Devils and played Centrefield. He was as consistent with the bat as he was with the glove and was never short of a word of advice for everyone.

We'd like to offer our thanks to the guys from the C's especially Rick -with a P- Gill and Geoff Frame for helping us out when we needed it.

In passing, we'd like to say thanks to the fellas for a memorable season. The teenager and the pregnant woman are both over the heart attacks, headaches, stomach ulcers and anxiety attacks and are back on the path to recovery. All in all they were a pleasure to coach and we hope they may have learned something. Thanks also to Anne Morton and Vicki Gannon for scoring. We'll see you all next season.

*Paula and Tracey.*

## A GRADE TEAM REPORT



Standing - Gary Ogg(Coach), Stephanie Gill, Tina Corbett,  
Tracie Blanch, Leanne Mountney, Leah Mellish  
Sitting - Selina Raiteri, Jo Hopkins-Lamb, Marie Goyder(Machen)

Absent - Sue Nesbitt (Asst.Coach) Refer Rep. Honours Page, Kelli Gross,  
and Maxine Cleary.

### Dayball

Clearly the 1988-89 season has not been a memorable one for Devils A Grade. Our results this season have been a source of great disappointment to myself, the players and our supporters.

No excuses are offered for this, we simply did not perform well enough on the diamond.

This lack of success should not be seen as a lack of application and dedication by our players - at all times they gave their best, but in the final analysis it was not consistently good enough.

In a season where my absences seemed at times more common than my presence, I offer sincere thanks to those who carried my load. My thanks to Shelley Payne and Chris Welsh for their "babysitting" of the team during both my and Sue's absence during the season. As always the talented and dedicated pair did a great job.

In looking at the season one could quite easily dwell on the negative aspects. There were however many positive sides to our efforts in 1988-89. This year saw a new battery join the club - Tina Corbett and Tracie Blanch. Together these two combined to make a most impressive debut in their first "A" Grade season. Next year Brisbane, watch out for this dedicated couple.

Jo Lamb, usually a rightfield/second base played for the entire season at shortstop - we had no one else - I asked and Jo, being the great team player she is, agreed and naturally made a success of the change. This is the type of unselfish team player that makes a winning team.

Leah Mellish became one of only three players at Devils, and few in Brisbane, to progress from T Ball to A Grade in the same club - quite a feat in these days of little club loyalty.

Special mention also for the courage of outfielder, Maxine "Mother" Cleary - Maxine is a lesson to younger players; her fearless play in the field or on the bases is a model to follow - total dedication on the diamond.

We were fortunate this year to have Sue Nesbitt as our Assistant Coach. To have the services of such a well credentialled and dedicated coach was a big bonus to the side and myself.

My thanks also to our official and "unofficial" managers, Margaret and Brian Mountney, for their work and to our scorer, Lyn Mellish, for her efforts on our behalf.

To the players, Captain, Stephanie Gill, Marie Goyder, Tina Corbett, Tracie Blanch, Leanne Mountney, Jo Hopkins-Lamb, Leah Mellish, Selina Raiteri, Kelli Gross and our one winged warrior, Maxine Cleary, my thanks for your perserverence and dedication - characteristics often hard to maintain in such a disjointed and frustrating season.

### Nightball

The one bright note of the season was the performance of our nightball team. The side we fielded for nightball contained only a handful of our regular A Grade side - the majority of the squad coming from our A2 and A3 sides.

These young and comparatively inexperienced players did themselves and their club proud as they easily matched performances with all other A Grade full strength sides. The exposure and experience gained by these players in this competition augers well for their future and the future of the club.

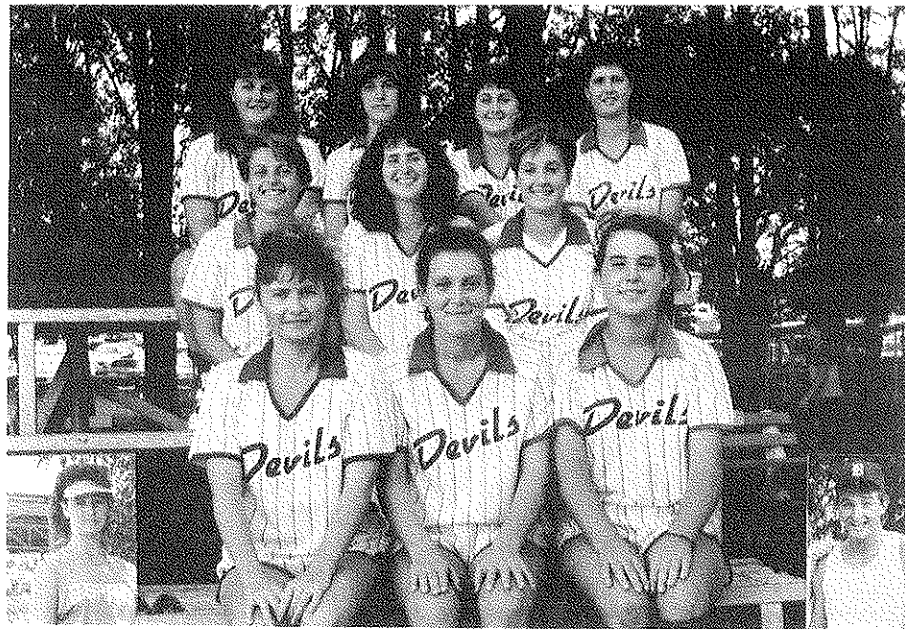
My thanks and congratulations to them all - Sharon Mountney, Susan Johnson, Allison Waters, Toni Larsen, Kathy Smallcombe, Narelle Sharrock, Leah Mellish, Krissy Dickman, Shelley Payne, Paula Warner and Anita Mellish, who along with regulars Stephanie Gill, Selina Raiteri, Marie Goyder and Leanne Mountney made up our nightball squad.

A personal thankyou to the committee of Devils Softball Club for their encouragement and support given to me during my absences as Australian Selector and Australian Assistant Coach - To be absent for so many games at such a vital part of the season placed a strain on many and I thank you for your enthusiastic support.

A1	A.B.	HITS	HOME	RUNS	SAC	BB	RBI	SB	K2	BAT.	FLYS	P.O.	ASS.	ERR.	FLD.	GAMES
				RUNS						AVE.					AVE.	PLAYED
S.GILL	60	19	1	15	-	5	5	5	4	.317	17	40	41	4	.952	18
S.RAITERI	45	13	1	3	3	6	7	-	6	.289	29	38	5	4	.915	20
M.GOYDER	58	16	1	7	4	2	9	1	3	.276	4	5	30	9	.795	19
L.MOUNTNEY	48	12	2	7	2	2	7	1	4	.250	9	123	8	6	.956	18
T.BLANCH	46	11	1	5	6	4	3	-	4	.239	8	54	3	3	.950	17
T.CORBETT	38	9	-	3	4	2	3	-	8	.237	4	5	27	1	.970	16
M.CLEARY	30	7	1	7	1	4	2	2	3	.233	13	23	6	3	.906	12
J.HOPKINS-LAMB	48	10	1	6	1	4	5	2	12	.208	19	27	32	10	.855	17
K.GROSS	46	9	4	6	3	2	13	2	6	.196	9	9	20	4	.879	17
L.MELLISH	37	4	-	3	6	3	2	-	2	.108	10	13	3	2	.889	16
TEAM	456	110	12	62	30	34	56	13	52	.241	122	337	175	46	.918	



## A2 TEAM REPORT



Back Row - Shelley Payne(Coach), Krissy Dickman, Fiona Martoo, Kathy Rosenberg  
 Middle Row - Paula Warner, Sharon Mountney, Anissa Martoo  
 Front Row - Melissa Corbett, Allison Waters, Narelle Sharrock  
 Inset - Susan Johnson, Chris Welsh(Asst.Coach)

We started off with 11 players, but soon were set back to 10 to tackle the season ahead. Some games we had our hearts set on winning and other games, our heads were in the clouds. I guess that happens sometimes, although it shouldn't because you're only one step away from A Grade. As the old saying goes; when we were good we were very, very good, but when we were bad, we were bad.

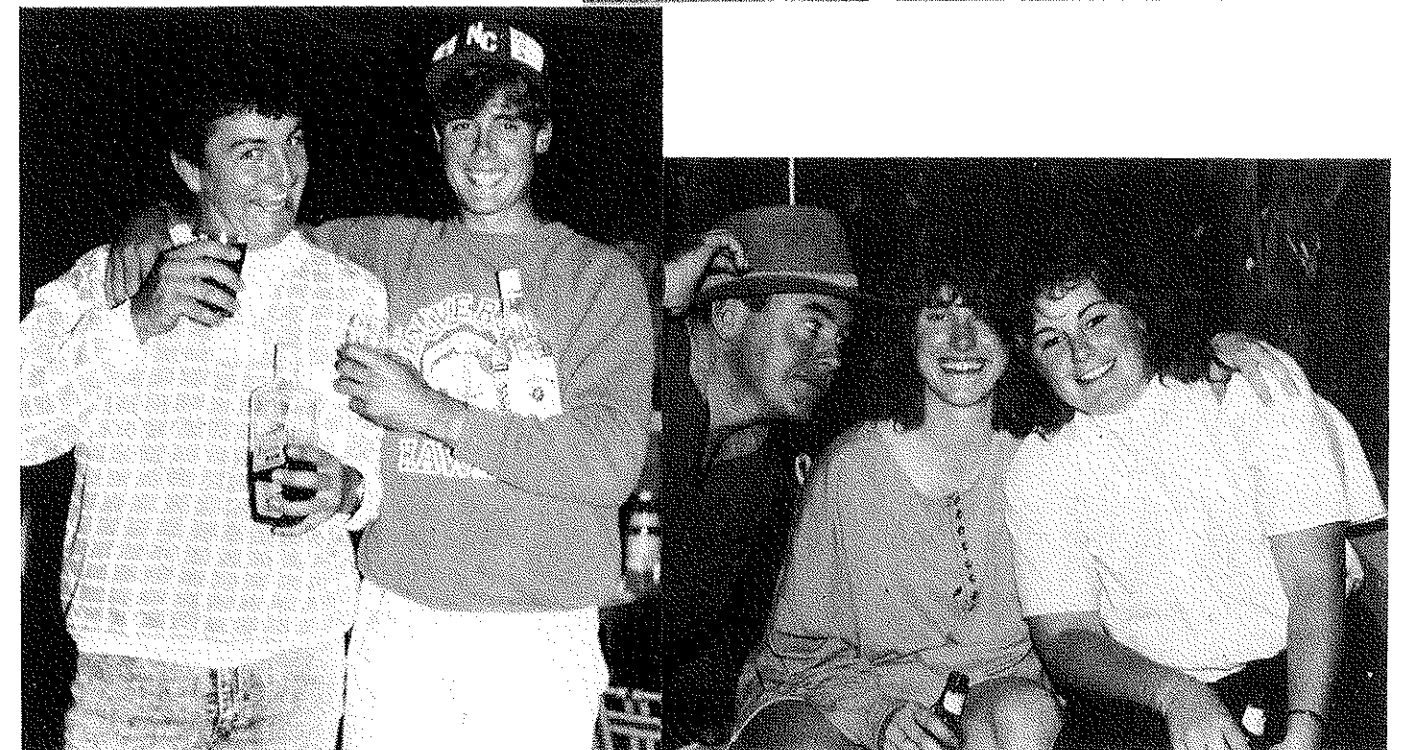
We were a hitting side with great potential, but we never reached that goal. We practised and we practised at getting the stance right, getting the swing right and getting the timing right, which we did great, at training that is! I guess it's just all those nerves when you face that big ugly bird on the mound, but we never quite managed to put it together. We had spits and spurts of great hits and baserunning (remember your sliding gear - if you don't slide, you'll be in deep .... - well you know how deep you'll be!). Joe Di Maggios we ain't but no worries guys, at least we tried.

Our fielding was pretty good with only a few of those nasty little red runs against us. Congrats guys, I'm sure you've outdone yourselves in the field.

All in all, Chris and I enjoyed ourselves coaching the old A2'thers this season. As for the girls themselves, it was a great experience to teach and to learn from each of you. Remember the good times.

Sincerely,  
 Shelley and Chris.

A2	A.B.	HITS	HOME RUNS	RUNS	SAC	BB	RBI	SB	K2	BAT. AVE.	FLYS	P.O.	ASS.	ERR.	FLD. AVE.	GAMES PLAYED
P.WARNER	20	7	-	3	2	1	1	-	2	.350	10	10	2	4	.750	10
M.CORBETT	30	9	-	4	-	-	2	-	2	.300	2	8	15	3	.885	10
S.JOHNSON	32	9	4	5	2	2	12	-	1	.281	7	22	2	-	1.000	11
S.PAYNE	20	5	2	2	-	-	6	-	-	.250	4	19	6	3	.893	8
A.WATERS	36	8	-	7	-	-	2	1	1	.222	6	76	6	2	.976	11
A.MARTOO	18	4	-	2	-	6	2	-	5	.222	8	11	28	1	.975	12
F.MARTOO	32	7	1	7	-	4	3	-	2	.219	10	21	8	2	.935	13
S.MOUNTNEY	37	8	2	5	-	-	4	-	3	.216	10	10	5	1	.938	14
K.DICKMAN	33	7	-	5	-	4	4	2	2	.212	9	14	10	5	.828	11
N.SHARROCK	29	6	-	3	1	3	3	1	5	.207	8	10	7	2	.895	11
K.ROSENBERG	34	5	1	6	1	2	1	2	2	.147	10	32	7	3	.929	12
TEAM	321	75	10	49	6	22	40	6	24	.233	84	233	96	26	.927	



## A3 TEAM REPORT

### Runners-Up



Back Row - Roy Wyatt(Co-Coach), Bob Gannon(Coach), Natalie Cook, Kathy Smallcombe, Georgina Kerr, Tracey Wyatt, Graham Smallcombe(Manager)

Front Row - Anita Mellish, Tammie Dare, Toni Larsen, Elizabeth Buckley, Alison Kelly.

Inset - Jan Buckley (Scorer)

After pre-season selection trials, Devils A3 team evolved as an interesting combination of youth and experience. All players were promoted from lower grades from the previous season plus a couple who were returning from a short break from the game. Pre-season training went well and all players slotted easily into positions even though some found themselves in slots that were new to them. We looked forward eagerly, if not with some trepidation, to a season in the senior A grade competition playing against older more experienced teams.

As soon as the season commenced, it became very obvious that this team would more than hold their own at this level of competition. The team began to operate like a well oiled machine which only missed a few beats during the season. Fielding was first rate but the batting caused a few worries from time to time.

Kathy and Natalie formed a top notch battery - certainly the most effective in the competition. They were supported by a solid infield of Georgie, Alison, Toni and the Garden Gnome, Elizabeth. Anything that luckily escaped the infield was more than capably cleaned up by our outfield trio of Tammie, Tracey and Anita.

The tone of the team was exceptional with all the girls willing to accept advice from their coaches and team mates and there was never an instance of criticism being leveled at other players only words or actions of encouragement.

My thanks to -

Co-Coach Roy - for his insight, assistance and good humour in putting up with me and the "ladies".

Manager Graham and his Assistant Pat - for their grand work work and patience with the team.

Scorer Jan - for her expert scoring and in-depth perception during games.

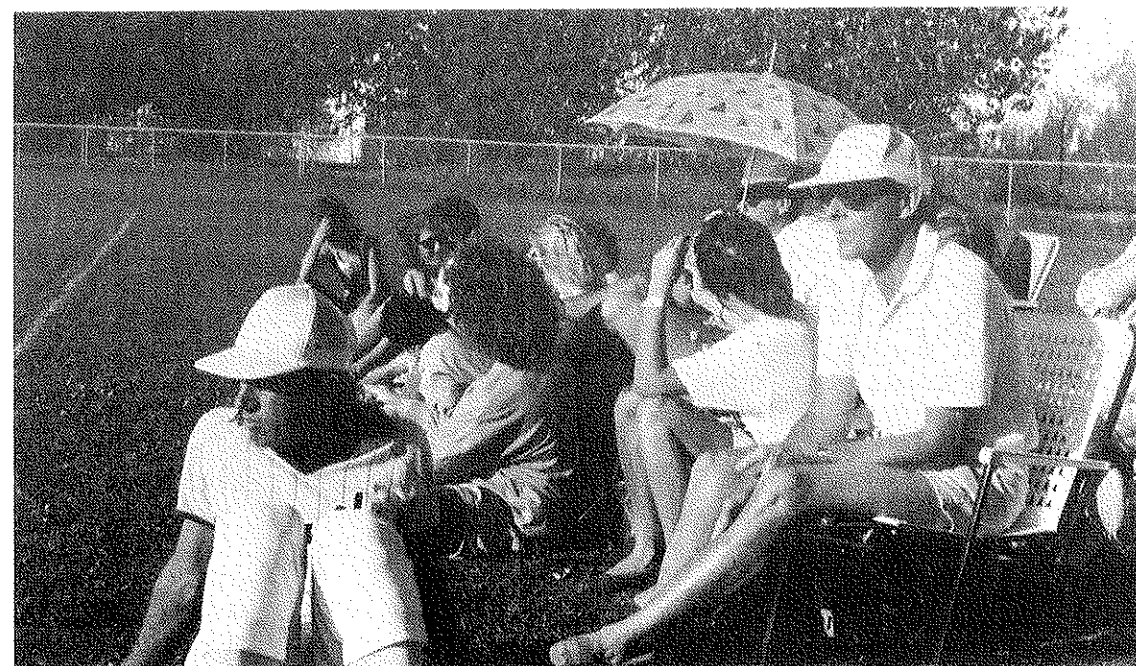
All the parents of the team for their support at games and in getting the girls to training.

All the players from lower grades who helped us out from time to time.

At the time of writing, Devils A3 had finished the regular season in second position and having won their semi-final had qualified for the grand final. Hopefully we will have plenty to celebrate in the near future.

Finally, Roy's and my thanks to the team for your co-operation and enthusiasm during the season. If you retain the same attitude to your future softball and life, you'll go a long way.

A3	A.B.	HITS	HOME	RUNS	SAC	BB	RBI	SB	K2	BAT.	FLYS	P.O.	ASS.	ERR.	FLD.	GAMES
				RUNS						AVE.					AVE.	PLAYED
A.KELLY	37	18	1	10	-	4	14	7	-	.486	8	15	15	1	.968	13
E.BUCKLEY	39	15	1	27	-	9	4	18	1	.385	15	24	24	4	.923	14
G.KERR	31	11	1	13	-	5	10	-	4	.355	2	79	9	1	.989	14
N.COOK	40	14	2	16	2	5	22	9	6	.350	7	52	9	3	.953	14
K.SMALLCOMBE	36	12	1	9	-	4	13	7	6	.333	4	5	22	3	.900	13
T.DARE	30	7	-	6	-	9	3	3	3	.233	9	9	4	4	.765	14
T.WYATT	28	6	1	9	-	12	2	4	5	.215	10	12	1	-	1.000	14
A.MELLISH	31	6	-	4	-	1	1	-	2	.194	3	3	-	2	.600	12
T.LARSEN	16	2	-	4	-	7	1	1	-	.125	5	7	14	4	.840	11
TEAM	288	91	7	98	2	56	70	49	27	.316	63	206	98	22	.933	





## B1 TEAM REPORT



Back Row - Brian Lacey (Asst.Coach), Kim Evans, Jill Atkins,  
Diane Feldman, Bob Payne(Coach), Vicki Gannon,  
Therese Kelly,  
Kneeling - Sue Hawley, Sue Harris,  
Prone - Susan Payne, Donna Penney, Sheridan Gralton.

At the time of this report, we are Minor Premiers with no guarantee of winning the Grand Final, however this team is very capable of taking out the Premiership. As I stated last year, I am again handicapped being a shift worker and, at this time, would like to thank my Assistant Coach, Brian Lacey and the Captain of the team, Vicki Gannon. Without their help and utmost dedication, coaching this team would have been a near impossible task. Many thanks also must go to the lady who coloured in all our runs - Mary Kelly.

We nominated for A3 Grade this year but, because of the number of teams in this grade, were relocated to B1. Our success in A3 may not have been as it has been in B1 but, nevertheless, I believe the B1 team of 1989 is a team of great strength and capability.

DIANE FELDMAN (Pitcher) - A player with outstanding qualities and with continual dedication; could achieve a higher standard in the game. She has been a great asset to the team and has helped us greatly in attaining the position of Minor Premiers, with a continual strike rate. I wish Diane all the best in Maryborough with her husband on transfer.

SUE HARRIS (Catcher) - This player has plenty of agility and is an important attribute to the team. She is a happy go lucky player, who, when required, can generate harmony into the team. Her batting has greatly contributed to the team's success.

VICKI GANNON (First Base) - Vicki was appointed Captain because of her steadying influence on the players and with a Level 2 Coaching Certificate, is more than capable of coaching in my absence. Vicki's ongoing commitment to the team has shone through with her taking on team manageress. A player with a high batting average and a great asset to, not only the team, but the club.

KIM EVANS (Second Base) - Kim's coverage of second base has been exceptional. With her constant effort through both physical and verbal ability, I feel she has developed a real understanding and knack for this position. When Kim achieves more confidence in her batting, she will shine as an all round player, even more so than she is now.

DONNA PENNEY (Third Base) - A very aggressive player both at fielding and batting. Donna's batting is the team's highest and, with better timing of the pitch which will result in different placement of the ball each time, her batting average could be incredible. An asset in the field and is a great asset to the B1's.

THERESE KELLY (Short Stop) - A very versatile utility player. She is a reliable lead off hitter with constant base hits. Therese needs more confidence in herself to attain that higher grade of softball and, with dedication, I'm sure she'll make it.

JILL ATKINS (Leftfield) - Jill has played this position with much precision, insofar as catching balls and, when in the batter's box, hitting for the team. With more confidence in herself, Jill would make an even better player than she is now.

SUE HAWLEY (Centrefield) - This player has remarkable talent and proved this to be so when I witnessed one of the greatest outfield catches I have seen in a long time. She does, when required, hit the ball a long way which has helped the team along with their success. A handy player to have as she also pitches when called upon.

SHERIDAN GRALTON (Rightfield) - A player who has taken many a great catch and who has shown great improvement throughout the season. She also needs confidence in herself, like many others, and in the long run this will help Sheridan's game.

SUSAN PAYNE (Utility) - A player who can be relied upon to play anywhere at any time. She needs to concentrate on her batting aspects and with practice, will be a great asset to any team. A consistently good baserunner with many stolen bases to her credit. With more experience, Sue could reach her goal.

B1	A.B.	HITS	HOME	RUNS	SAC	BB	RBI	SB	K2	BAT.	FLYS	P.O.	ASS.	ERR.	FLD.	GAMES
				RUNS						AVE.					AVE.	PLAYED
D.PENNEY	45	23	2	18	-	5	22	9	2	.511	6	21	15	7	.837	15
V.GANNON	34	17	-	14	1	10	13	8	1	.500	9	72	1	4	.948	13
T.KELLY	46	22	-	17	-	6	11	13	-	.478	5	10	19	7	.806	14
K.EVANS	17	8	-	6	1	8	5	4	5	.471	2	6	4	3	.769	10
D.FELDMAN	30	14	-	13	-	9	4	3	1	.467	5	8	15	1	.958	13
J.ATKINS	28	13	1	12	-	6	10	5	2	.464	6	6	1	3	.700	13
S.HARRIS	34	15	-	20	-	9	6	12	-	.441	1	24	2	5	.839	13
S.HAWLEY	26	11	1	14	-	11	12	5	3	.423	8	10	11	6	.777	12
S.GRALTON	34	14	-	7	-	7	6	10	2	.412	10	15	4	10	.655	15
S.PAYNE	34	13	-	14	-	5	9	10	-	.382	5	27	10	6	.860	12
TEAM	328	150	4	135	2	76	98	79	16	.457	57	199	82	52	.843	

## B2 TEAM REPORT



Back Row - Sheila Gralton(Player/Coach), Wendy Waldon, Sharyn Penney, Melissa Frome, Lea Coulthurst, Keith Moore(Coach)  
Front Row - Bronwyn Miller(Moore), Aileen Earle, Diane Paterson.

AILEEN EARLE - LEFTFIELD. Took some excellent catches. Great with the bat and has a first class throw. 100% effort every time - capable of a higher grade. "Pity she's too old to slide". Thanks Ail.

DIANE PATERSON - FIRST BASE. What a surprise packet! First season and did a great job. Took some good catches and pulled off a couple of great doubles. Hope you stick around, Mrs. Paterson.

CLAIRE REES - SECOND BASE. This was Claire's first season at softball. She did all that was asked of her. Even managed a hat trick. Well done, Claire.

SHARYN PENNEY - THIRD BASE. Sharyn at times displayed some great glove work and has a very good arm. Had some great "outs" at first. Inclined to get a bit frustrated with herself. Thanks, Sharyn.

BRONWYN MILLER - CATCHER. Bronwyn's ability as a catcher was a surprise to me. She also caught for B1's a couple of times and did a great job. Had a great season.

MELISSA FROME - SHORTSTOP. This was Melissa's first season at softball so playing short stop at B2 level was quite a tall order. However she did a great job. Thanks Melissa - Hope you come back next year.

DANIELLE CAVANOUGH - RIGHT FIELD. Only had a few games. Had never played before. Unfortunately I think Danielle felt B2 was a bit too much for her. At least you had a go, Danielle.

LEA COULTHURST - CENTRE FIELD/PITCHER. Lea missed the first 1 or 2 games. Has a great arm. Also is more than a capable pitcher and stepped into that position when required. Thanks Lea - Keep up the good work.

WENDY WALDON - RIGHT FIELD. Another newcomer to softball. Always tried hard. Attended every training, making her an enthusiastic team member.

SHEILA GRALTON - PITCHER/COACH. The last title was just a rumour started by someone who thought player/coach was easy. Thanks for everything, Keith.

Thanks to all the Juniors who filled in for us which was every week. Without you we would have had to forfeit. You all did a great job. Many thanks also to our Scorers and anyone else that helped through the season.

### SHEILA GRALTON.

B2	A.B.	HITS	HOME	RUNS	SAC	BB	RBI	SB	K2	BAT.	FLYS	P.O.	ASS.	ERR.	FLD.	GAMES
			RUNS							AVE.					AVE.	PLAYED
S.PENNEY	25	12	-	13	-	7	6	6	-	.480	4	16	12	16	.636	11
B.MILLER	24	9	-	15	-	16	8	6	2	.375	1	22	6	9	.756	13
M.FROME	22	8	-	7	-	7	7	2	3	.364	7	12	11	9	.719	10
S.GRALTON	29	10	-	9	1	3	6	3	2	.345	9	10	17	5	.844	12
C.REES	17	5	-	4	-	3	6	4	4	.294	7	9	7	6	.727	8
A.EARLE	29	8	-	18	-	10	8	14	-	.276	12	12	5	2	.895	12
D.PATERSON	18	3	-	5	-	6	4	-	3	.167	8	42	2	5	.898	10
L.COULTHURST	13	1	-	8	1	11	6	2	1	.077	5	5	6	7	.611	10
W.WALDON	22	-	-	8	-	16	5	4	11	-	1	1	2	5	.375	13
TEAM	199	56	-	83	2	79	56	41	26	.281	54	129	68	64	.755	



Well Keith, what do you think of this B1 group?





## UNDER 16A TEAM REPORT



Back Row - Robyn Gillinder(Scorer), Tania Martin, Christine Kriedemann  
Melanie Wilson, Tonya MacGregor-Davies, Karla Manning,  
Dawn Billsborough and Dale  
Front Row - Nikea with Tracey Gillinder, Melynda Paterson, Terine Hull  
Tanya Robinson  
Insert - Sharon Mountney (Coach).

Devils Club can be proud of this team of 9 young athletes.

Overcoming a long list of injuries they moulded together as a unit, who, on their day, could take on and beat the best.

A big thank you goes to all the girls who filled in for us from the lower grades - the way they played shows Devils future is safe. Thank you also to our Manageress, Elaine, and our various scorers and fill-in coaches.

It is a well known fact that coaching this age group can be very frustrating and they didn't let that tradition down. Concentration levels, opposite sex distraction and generally trying to get the girls to realise their full potential, was a challenge.

However no matter how far we go in the finals, and we hope it is all the way, they can all be proud of their individual as well as the team's performance on and off the field.

TRACEY GILLINDER - This year has been a challenging one for Tracey as we have tried and succeeded in moulding her into a first base - a position she has never played full-time. Tracey is a solid player who can adapt to any position asked. Last year her coach said she could make "A" Grade and we also share this feeling - but Tracey you must know it yourself. Listen to what people tell you, whether you agree or not, as you may need it for future reference (coaching).

MELYNDA PATERSON - One of the quiet achievers of the team who is dedicated both to her club and her team-mates. Melynda played quite a few positions for us without complaining. Thank-you for your help with player/coach relations - you were great, and a pleasure to coach.

TONYA MACGREGOR-DAVIES - Tonya is one of our players who, when psyched up, can achieve anything. Unfortunately this doesn't happen nearly often enough. Tonya you have a lot of talent but you must learn how to tap that reservoir yourself. You'll surprise yourself with the results - Good luck next year!

KARLA MANNING - What can we say? Truly a brilliant thinking player with a great future ahead of her, she is more than willing to play in another position to help her team. With that smile on her face continuously (I think she must be up to something) she is a pleasure to coach. Good luck!

CHRISTINE KRIEDEMANN - Another player who won't stop smiling (she obviously knows something we don't) and who is a great team player. Consistently started the team off well in the batting and successfully made many outs from third base. Christine was selected in the Queensland Talent Squad this year so we are sure this won't be the last good report on this player. Good luck next year!

TANYA ROBINSON (RED) - Certainly the live wire of the team. Tanya, although you have improved this season, there is still a lot more to be accomplished. Watch others, keep asking questions and listen closely next season. A pleasure to coach.

TERINE HULL - Terine has made the jump from 14's to 16's quite easily and has continued to improve throughout the season. Terine has been thrown into quite a few different positions and performed well. Her batting/bunting also worth a mention with a season average of .500. Keep it up kiddo - the sky's the limit!

TANIA MARTIN - Tania's throwing and batting has improved significantly towards the end of the season. Tania has proved the saying 'practice makes perfect' several times this season. Concentration needs to be improved before optimum performance can be achieved. A good season - well done.

MELANIE WILSON - A great batting performance throughout the season. Melanie was a strong player on the field and at times was unhittable when on the mound. Keep it up!

UNDER 16A	A.B.	HITS	HOME	RUNS	SAC	BB	RBI	SB	K2	BAT.	FLYS	P.O.	ASS.	ERR.	FLD.	GAMES
			RUNS							AVE.					AVE.	PLAYED
T.HULL	26	13	-	16	3	7	8	4	2	.500	7	14	6	-	1.000	14
T.MARTIN	18	7	-	10	-	14	12	4	1	.389	3	39	6	3	.937	13
M.WILSON	31	12	-	18	-	11	9	6	3	.387	5	10	13	5	.821	14
C.KRIEDEMANN	29	11	2	19	1	9	17	3	-	.379	1	5	11	3	.842	11
K.MANNING	35	13	-	21	-	9	16	5	1	.371	8	11	12	3	.885	15
T.MacGREGOR- DAVIES	30	10	-	8	1	6	16	2	1	.300	4	4	-	-	1.000	14
T.ROBINSON	17	5	-	13	-	12	4	1	1	.294						11
T.GILLINDER	32	7	-	11	1	7	7	3	6	.219	1	32	6	1	.974	14
M.PATERSON	19	2	-	11	-	12	8	1	2	.105	3	11	3	3	.824	10
TEAM	237	80	2	127	6	87	97	29	17	.338	32	126	57	18	.910	

## UNDER 16B TEAM REPORT



Back Row - Jeff Morton (Coach), Tania Butterworth, Karen Dows,  
Raquel Tafe, Rochelle Maunder  
Front Row - Nicole Tinney, Dayle Griffin, Donna Burley, Susan Wicks,  
Lee Burley (Manageress)  
Inset - Brandi Earle, Donna Penney (Asst.Coach),

This year was one of those years you can just chalk up to experience. Mostly an experience in frustration and disappointment. Frustration in that we only once fielded a team of nine registered players and disappointment in the fact that without a whole team, no real teamwork can be formed. This did not enable the regular players to enjoy or to improve on their game as much as they should have.

The potential to win was there and the individual skills did, on occasion, show through. With a full team and some further coaching, these girls would do much better than the results this season indicate.

Through all this we enjoyed a friendly and supportive season.

My thanks to Donna Burley, Dayle Griffin, Nicole Tinney, Tania Butterworth, Karen Dows and Raquel Tafe for being there throughout the season.

Also my thanks to Donna Penney for her assistance and a special thanks to Paula for her time - it seemed to give the girls much more confidence in their abilities.

A very special thanks to Lee Burley, the Manageress, for the organisation, recruiting drives and support. Lee's help really kept this team running as smoothly as the circumstances allowed.

I must not forget all the Under 14's who filled in for us this year, as well as the scorers and the parents who come to most games. Also Brandi Earle, a registered player from the start, who contracted Glandular Fever and was sidelined for most of the season.

UNDER 16B	A.B.	HITS	HOME RUNS	RUNS	SAC	BB	RBI	SB	K2	BAT. AVE.	FLYS	P.O.	ASS.	ERR.	FLD. AVE.	GAMES PLAYED
R.MAUNDER	11	5	-	5	-	3	1	2	-	.454	2	23	-	1	.958	5
S.WICKS	13	5	-	6	-	3	4	4	-	.384	2	2	14	-	1.000	5
T.BUTTERWORTH	26	8	1	8	1	6	8	5	-	.308	5	22	7	6	.829	13
N.TINNEY	32	6	-	7	-	-	8	-	1	.188	1	1	-	3	.250	13
K.CHAPMAN	7	1	-	5	-	8	1	-	-	.143	3	27	-	-	1.000	6
D.BURLEY	20	2	-	10	-	13	8	-	4	.100	2	7	10	4	.810	13
R.TAFE	21	2	-	4	-	2	3	3	1	.095	5	5	1	6	.500	9
D.GRIFFIN	11	1	-	5	-	10	4	-	-	.090	1	1	7	6	.571	9
K.DOWS	18	1	-	8	-	10	3	1	2	.005	6	14	15	6	.829	12
TEAM	169	31	1	58	1	55	40	16	8	.183	27	102	54	32	.820	



UNDER 14B	A.B.	HITS	HOME RUNS	RUNS	SAC	BB	RBI	SB	K2	BAT. AVE.	FLYS	P.O.	ASS.	ERR.	FLD. AVE.	GAMES PLAYED
M.FRASER	30	17	-	21	1	10	12	18	-	.566	3	8	10	3	.857	15
J.HURFORD	25	13	1	21	1	14	11	12	4	.520	5	14	7	6	.776	14
N.LAMB	29	14	-	15	-	5	7	8	1	.483	6	54	14	2	.971	13
M.CARROLL	20	7	1	18	-	16	7	10	5	.349	6	7	4	3	.786	14
L.DAVIES	15	5	-	8	-	7	3	3	-	.333	1	1	2	2	.600	10
A.EVANS	24	6	-	8	-	9	4	3	6	.250	3	46	-	7	.853	14
S.FRASER	26	44	-	13	-	15	5	12	4	.154	5	5	12	3	.850	15
T.BIRD	21	2	-	4	-	4	2	-	5	.095	-	-	2	-	1.000	12
B.LOHRISCH	10	-	-	3	-	7	1	2	3	-	2	2	1	1	.750	10
D.ELLIOT	12	-	-	1	-	6	-	2	5	-	1	1	1	1	.666	11
B.BAILEY	10	-	-	2	-	8	2	-	2	-	-	-	-	-	-	5
T.WICKS	12	10	2	12	-	5	5	3	-	.833	-	8	2	2	.833	6
TEAM	234	78	4	126	2	106	59	73	35	.332	32	146	55	30	.866	



## UNDER 14A TEAM REPORT



Back Row - Tania Smith, Tracey Paterson, Rowena Clancy, Kim Andrew, Kym Huddart

Front Row - Paula Ovenden, Michelle Vernon, Jenny Wilkins.

Absent(?) - Coach, Gary Ogg.

This season Devils fielded a side capable of winning the Premiership in this grade. Unfortunately a series of events during the season saw this made more unlikely. Our team of 9 in a few short weeks during mid-season was quickly reduced to 6. The loss of Tania Smith to boarding school, Tanya Pointing to a shift out of town and the tragic loss of Rowena Clancy with a broken arm saw us deep in trouble.

Our remaining Super Six, Michelle Vernon, Jenny Wilkins, Paula Ovenden, Kim Andrew, Kym Huddart and Tracey Paterson have carried on regardless - ever optimistic and ever cheerful - have shown great skill, patience and understanding - not easy when required to play with a variety of new players week after week. This situation was made even more difficult for these girls by the fact they had to "endure" a variety of coaches during the time I was absent on other duties.

My thanks to Bob Gannon, Leanne and Sharon Mountney and Allison Waters, who all at one time or another coached the team.

Particular thanks to all the many Under 14B and 12A players, who reserved so often and so well for the team.

A Brief rundown of the team:

MICHELLE VERNON - a player with a great future - pitched for the team under protest but did a magnificent job - gives 100% effort in all aspects of the game - watch for big things.

JENNY WILKINS - had a strong season at catcher - needs to work on skills but definitely shows the toughness and enthusiasm to make a success in this position - consistent hitter.

PAULA OVENDEN - a solid season at second base and at lead off batter - plays this position well with good skills, spirit and determination.

KYM HUDDART - Shortstop extraordinary - could be anything in this game - has loads of ability if only she realized it and applied herself at all times.

TANYA POINTING - Very solid all round player, who was the backbone of the outfield. All the best in the bush league.

TANIA SMITH - Safe in the field and showing potential as a power batter, before her early departure.

KIM ANDREW - our utility who filled in at shortstop, third and first - as always a great trier with the ability and courage to succeed.

TRACEY PATERSON - our outfield strength - displays great enthusiasm and willingness to learn and improve - handled the competition in this grade well.

ROWENA CLANCY - our one winged first base - showed the benefit of being a quick learner and enthusiastic trainer until her sad accident - shows definite potential as a switch hitter.

My thanks to these girls and our many other players for a most enjoyable season - our faithful band of parental supporters were ever loyal and encouraging.

To scorers, Fay Fraser (also our chief organizer of reserves) and Tracey Wyatt, my genuine gratitude is extended.

I enjoyed the season and look forward to following the careers of these talented juniors.

GARY OGG.

UNDER 14A	A.B.	HITS	HOME	RUNS	SAC	BB	RBI	SB	K2	BAT.	FLYS	P.O.	ASS.	ERR.	FLD.	GAMES
			RUNS							AVE.					AVE.	PLAYED
M. VERNON	36	14	-	13	1	1	11	3	1	.390	2	4	23	3	.900	14
K. ANDREW	35	13	1	15	1	7	3	8	2	.372	9	30	8	5	.884	15
T. SMITH	17	6	1	8	1	2	6	4	2	.353	2	2	-	2	.500	7
K. HUDDART	38	13	-	7	-	1	4	5	2	.342	8	14	13	4	.872	14
J. WILKINS	36	10	-	12	-	4	6	5	8	.278	3	39	9	5	.889	14
R. CLANCY	16	4	-	5	-	5	5	3	-	.250	6	60	1	4	.938	8
T. PATERSON	27	5	-	9	-	3	6	5	3	.185	5	5	-	-	1.000	13
T. POYNTING	15	2	-	6	-	3	1	2	2	.136	1	1	2	1	.750	7
P. OVENDEN	32	4	-	8	-	10	5	4	5	.125	8	13	15	6	.824	13
TEAM	252	71	2	83	3	36	47	39	25	.280	44	168	71	30	.889	



## UNDER 14B TEAM REPORT

### Runners-Up



Back Row - Allison Waters(Asst.Coach), Amber Evans, Leigh Davies,  
Meredith Carroll, Toni Wicks, Fay Fraser(Scorer/Manageress)  
Middle Row - Debra Elliot, Tamara Bird, Melissa Fraser,  
Belinda Lorisich  
Front Row - Susan Fraser, Jodi Hurford, Nicole Lamb  
Inset - Susan Johnson (Coach)

This has been my second year for coaching (Allison's first) and both times the team has had potential - a team of Great Kids. We would like to thank the parents for getting the kids to training and the games.

We have both enjoyed coaching even though there has been a few hiccups. The team has improved a lot. There are still a few little things that they must remember but apart from that they've done really well.

Two years in a row I've had the Top Team in the Grade - It's a wonderful feeling. I owe it to the kids - Thanks a lot, Kids!

We would like to thanks Mrs. Fraser for Scoring and Manageressing and to the Mums and Dads for coming along and cheering.

A big THANK YOU to Allison for helping me out and also to her mother for being so supportive.

The Team is made up as follows-

SUSAN FRASER: Filling the position as our pitcher, she certainly dazzled the opposition with her speedy deliveries and consistent accuracy. All round Sue accomplished everything asked of her. Thanks for the hard work and dedication and keep up the excellent pitching.

NICOLE LAMB: Well what could one say - an extremely aggressive young player who, no matter what the situation, always seems to be in control. Both her batting and fielding efforts were always outstanding - a player who certainly has a bright future. Good luck with your softball Nikki.

AMBER EVANS: Displaying safe hands on first base, Amber proved to be a very consistent player whose steady improvement has certainly become noticeable. Capable of pulling out those big hits, Amber certainly proved to be potentially strong in the batting box. Good work Amber.

MELISSA FRASER: Miss Utility of the team, Melissa certainly displayed her all round knowledge of the game. A valuable team member, Melissa is an aggressive, talented young player whose, both, batting and fielding abilities should make her softball career a promising one.

JODI HURFORD: A swift little mover, Jodi really excelled as our shortstop and, as our lead up batter, always got us off to a good start. Your aggressive approach both on the field and in the batter's box will always serve you well. To you Jodi, keep up the good work and thanks for your big effort.

BELINDA LORISCH: One of the big improvers of the year, Belinda started the season with little knowledge of the game but has gone ahead in leaps and bounds. Thanks a lot to you Belinda because it is always nice to see a player who is trying hard. Good luck for the future.

DEBRA ELLIOT: Another big improver of the season, Debbie began with some skills, but over the duration of the season she has improved immensely. It is always good to see a player improve and this you have really done. Good work Debbie and hope to see you next season.

TAMARA BIRD: Tamara had a nervous start to the season but has developed into quite a capable little player, batting the ball aggressively by the end of the season. On the field, Tamara was always willing to listen and learn and this persistence should serve her well. Good luck Tamara.

MEREDITH CARROLL: Well done Meredith, a really great season. Meredith started the season as our third base woman and played extremely well, but found her strength was in the outfield. On more occasions than one, Meredith took outstanding catches using her speed and great glove work. Meredith batted solidly so, to you Meredith, your future sure looks great. Keep up the good work.

LEIGH DAVIES: Playing in the outfield, Leigh always tried hard and gave it her all both batting and fielding. Keep on improving Leigh and hope to see you back again next season.

TONI WICKS: Toni's addition to the team half way through the season certainly contributed to the team's strength. Toni is yet another young player who has consolidated a strong, batting and fielding game. Thanks for your dedication Toni, you certainly served us well.

For Under 14B Statistics - Refer Page Two Under 16B Report, please.



## Runners-Up



Back Row - Tracey Wyatt (Asst.Coach), Natasha Gerhardt, Natasha Robinson, Aileen Earle (Coach)  
Middle Row - Trisha Robinson (12B), Britt Martin, Bernadette Jagger, Natalie Martin  
Front Row - Peta Hudson, Christie Andrew, Susan Oliphant, Melita Perry

Well, what a season it has been - one of mixed fortunes. The girls were certainly an experience to be around and there were times when there was some doubt as to who was coaching who.

The Team is full of extremely talented players and their basic softball skills have improved with each game. At this point it is still not known where the team will finish on the ladder but they have put in a huge effort.

As a result of the close friendship every one in the team had, there was very little arguing on or off the field.

Many Freddos, few tantrums and lots of grey hairs later, we have reached the end of a very successful season. (Don't ever let anyone tell you that kids can't be bought.) We hope the players have learned something from all of our efforts (even though at times it didn't look like it) and we wish them all the best for their future softball careers. We have certainly enjoyed ourselves in the process.

At this stage we would like to hand out the thank-yous. Firstly to the Mums and Dads for bringing the girls every week (we know how you love those EARLY Saturday mornings) and for their total support; especially our multi-talented Manageress, Mrs. Martin and our apprentice scorer, Mrs. Gerhardt. You did a terrific job, both of you.

NATASHA GERHARDT - PITCHER. Natasha is a very promising young pitcher who is just lacking in confidence. Her first season with Devils and she pitched more than 30 strike outs. If only she'd practice more often, who knows where she'd end up. A very solid batter, once again lacking confidence. Keep up the good work!!

NATASHA ROBINSON - CATCHER. This girl is unbelievable with the bat. Batting at the number 8 position, she always comes through with a big hit when needed. Her catching abilities have improved out of sight over the season. Always good for a laugh but a job well done, Tash!!

BRITT MARTIN - FIRST BASE. Britt is a very competent first base with good glovework. One of the more verbal team members, Britt is always offering encouragement. She bats well but needs to think about the high pitches. Keep up the good work and you'll go places Britt!!

NATALIE MARTIN - SECOND BASE. Nat is a joy to coach. She's always willing to try whatever is asked of her. She has pulled off some fabulous plays at second, making use of her excellent glove skills. As our lead-off batter Nat has done well, picking numerous walks as well as the hits. Like her sister, she'll go places if she keeps at it. Well done Nat!!

CHRISTIE ANDREW - THIRD BASE. Christie's year has been a mixed one. She has improved immensely, although her batting and fielding have been up and down. She needs to work on putting some power in her throws and then she'll be a good all-rounder. A good season Christie.

SUSAN OLIPHANT - SHORTSTOP. Susie is the most talented youngster on Park. She definitely has the potential to represent her country if she wants to. Her glovework is impeccable and she has pulled off some dazzling plays at shortstop. Solid batter and the fastest baserunner on the team. Well done, Susie.

MELITA PERRY - OUTFIELD. Melita was pulled up from the 12B's at the start of the season. She has improved a great deal since then. Her batting has improved so much that she hit a home run in the middle of January. A talented kid, if only she'd practice concentrating. Good job Melita.

BERNADETTE JAGGER - OUTFIELD/SECOND BASE. Bernadette has been the backbone of our outfield, taking many good catches and saving the odd home run. Her batting has also been of an extremely high standard. She is always willing to try anything new and is an absolute delight to coach. This is her first season with Devils and we hope it won't be her last. Keep up the good work, kiddo!!

PETA HUDSON - OUTFIELD. Peta is the magical ninth player that we lacked for most of the season. After only a few weeks the improvement in her game is visible. She has a lot of talent, but needs someone to work with her.

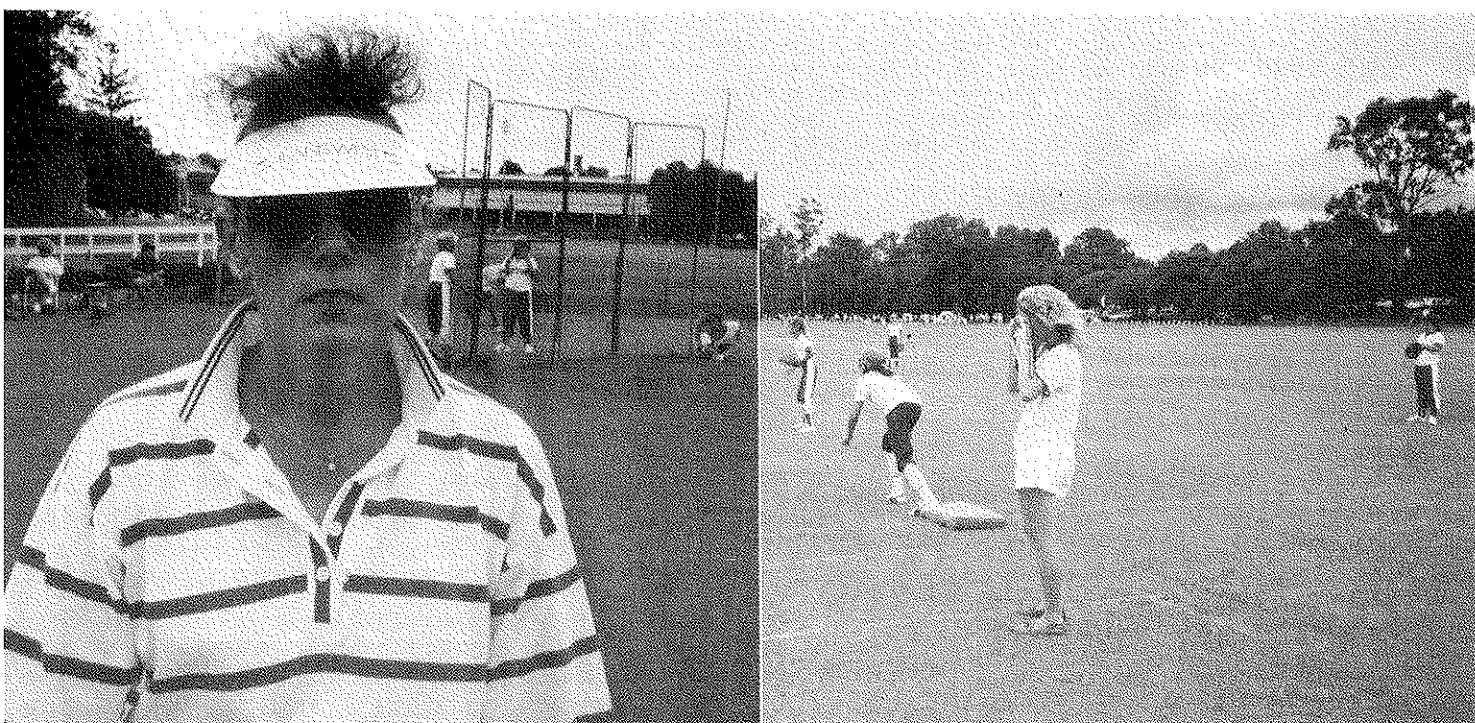
A big thank-you to all the Under 12B players who filled in for us when we needed them. Without you, we wouldn't have been able to take the field - THANKS HEAPS!!! It had taken us three-quarters of the season to have 9 players. This didn't last long as, with four weeks to go, Bernadette broke her finger - back to 8!

Lastly, to Robyn Gillinder and Anne Morton for braving the early mornings and "coaching" our new scorer. Thanks.

We hope to see all the kids back next season as keen and hungry for knowledge as they were this season.

Aileen and Tracey.

UNDER 12A	A.B.	HITS	HOME	RUNS	SAC	BB	RBI	SB	K2	BAT.	FLYS	P.O.	ASS.	ERR.	FLD.	GAMES
			RUNS							AVE.					AVE.	PLAYED
B.MARTIN	42	27	6	32	-	4	35	12	-	.643	1	54	8	5	.926	14
N.ROBINSON	34	19	4	24	-	7	25	10	2	.559	3	40	3	10	.812	14
N.GERHARDT	34	18	4	26	-	9	25	7	1	.529	13	13	19	6	.843	14
S.OLIPHANT	28	12	-	24	-	11	8	19	-	.430	5	5	23	5	.849	12
N.MARTIN	40	15	1	30	-	13	8	23	3	.375	6	9	10	6	.760	14
C.ANDREW	31	10	-	25	-	20	18	18	5	.322	-	3	-	8	.270	14
P.HUDSON	4	1	-	7	-	7	3	1	2	.250	-	-	-	2	-	4
B.JAGGER	18	4	-	16	-	12	5	13	-	.222	4	4	1	3	.624	10
M.PERRY	16	2	1	16	-	20	7	10	4	.125	3	3	-	4	.425	14
TEAM	247	108	16	200	-	103	134	113	17	.437	35	133	64	49	.802	



## UNDER 12B TEAM REPORT



Back Row - Rosemary Butler(Manageress), Tracey Gillinder(Coach),  
Susan Payne(Asst.Coach), Maxene Whittles(Scorer)  
Middle Row - Joanne Newlands, Kellie Brockman, Amanda Whittles,  
Jennifer Butler, Rachael Engelmann  
Front Row - Beth Agnew, Trina Bechly, Danielle Worthington, Rachel Vernon

At the time of writing this report we are coming second, with a lot of work needed to keep our position on the ladder. I would like to thank the parents and supporters for their tolerance throughout the season.

I would particularly like to thank Mrs. Whittles (our scorer) and Mrs. Butler (our Manageress) for their support. Also thanks to Melynda Paterson for her help in training and in games when Susan was unable to be there.

To the girls, this season we've all learned something - you've learned some more softball skills and made new friends, and I've also learned a lot too!!

As the season progressed, all team members showed improvement in their skills. Good work girls!!

JENNY BUTLER - PITCHER/UTILITY. After a great start to the season, Jenny had a few setbacks with a dislocated thumb and a broken bone in her foot. Jenny has a great attitude towards the game and has a lot of potential. Keep it up, Jen, and you will go a long way. This girl is our Most Consistent.

TRISHA ROBINSON - CATCHER/FIRST BASE. Trisha is the keenest player in our team. She always does as she's asked and always puts in 100% at training and in games. She will be able to reach great heights with her ability and well deserves our Most Dedicated Trophy.

UNDER 12B	A.B.	HITS	HOME	RUNS	SAC	BB	RBI	SB	K2	BAT.	FLYS	P.O.	ASS.	ERR.	FLD.	GAMES
			RUNS							AVE.					AVE.	PLAYED
M.ELLIS	1	1	-	1	-	3	2	-	-	1.000	1	1	2	-	1.000	2
J.NEWLANDS	5	4	-	3	-	-	1	1	-	.800	-	2	-	-	1.000	2
J.BUTLER	8	6	4	17	-	11	10	6	-	.750	2	5	5	5	.750	8
T.BECHLY	9	6	2	12	-	9	5	5	2	.666	-	5	1	-	1.000	9
D.WORTHINGTON	20	13	1	13	-	8	7	3	4	.650	1	8	4	8	.600	11
K.BROCKMAN	13	8	2	5	-	-	8	-	-	.615	3	3	4	1	.875	5
R.VERNON	15	9	-	18	-	11	7	3	3	.600	-	1	1	6	.333	12
J.BERRY	4	2	-	4	-	6	2	1	2	.500	-	-	-	6	-	6
R.ENGELMANN	23	11	-	15	-	2	5	4	3	.475	1	3	3	6	.500	11
A.WHITTLES	11	5	-	15	-	10	6	9	3	.454	-	1	-	2	.333	10
T.ROBINSON	18	7	1	14	-	6	11	7	1	.389	-	19	-	5	.795	12
A.TOOH	5	1	1	9	-	10	4	4	3	.200	1	1	1	7	.222	10
B.AGNEW	8	1	-	3	-	3	2	-	2	.125	-	-	-	1	-	7
J.SIMMONS	4	-	-	2	-	2	1	-	3	-	-	-	-	-	-	3
TEAM	144	74	11	136	-	81	71	43	26	.513	9	49	21	47	.401	



TRINA BECHLY - FIRST BASE. When Trina first came to us she only had school softball experience. She has trained hard and plays well. You have what it takes and are determined to make the most of it - you will deserve our "Most Improved" Trophy.

RACHAEL ENGELMANN - UTILITY. Rachael has improved a lot this season, although she still has some work to do on her fielding. She is always keen to learn new skills and that is an asset in any young player. You've done well for your first season in club softball.

ALISON TOOTH - SECOND BASE. Alison has played various positions all year, but second base is the one she's played most. Just stick with it Alison and you'll achieve what you want. The confidence you've gained this season is a very important part of the game.

RACHEL VERNON - THIRD BASE. Rachel is also a very keen little player. She's had a good season at Third and is an asset to any team. Concentration and practice will ensure her a bright future.

DANIELLE WORTHINGTON - CATCHER/SHORTSTOP. Danielle played catcher for most of the season, although, when Trisha took over catcher, she played shortstop with ease. A little more concentration will improve your game.

BETH AGNEW - RIGHTFIELD. Beth missed the first few games of the season but since has done her duty and done it well. With a little more work, Beth could achieve all she wants to.

AMANDA WHITTLES - CENTREFIELD. Amanda has all the qualities it takes and, if she practises well, she will achieve her goal. A bit more confidence in yourself, Mandy, and it will improve your attitude towards the game.

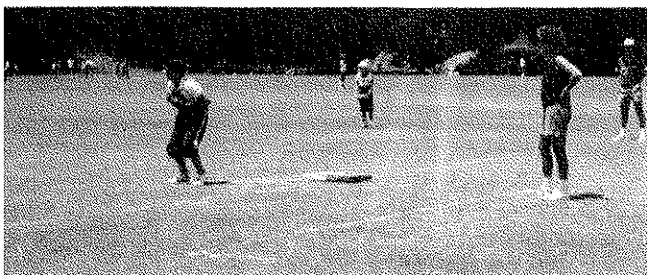
JADE SIMMONS - OUTFIELD. Jade has only been with us for a little while now and, with only school softball experience behind her, she has already shown improvement in her game. Keep up the good work, Jade and we hope we see you again next season.

KELLIE BROCKMAN - PITCHER/UTILITY. Kellie stepped in to help out in our hour of need when Jenny broke her foot. She has stayed on and also helped the 12A's out by playing for them a couple of times - not bad for your first season. Her pitching is looking great at this stage although her fielding needs more work.

Special thanks must also go to Joanne Newlands and Michelle Ellis for playing for us when we were in need.

Thanks also to my Assistant Coach, Susan Payne - your help was greatly appreciated.

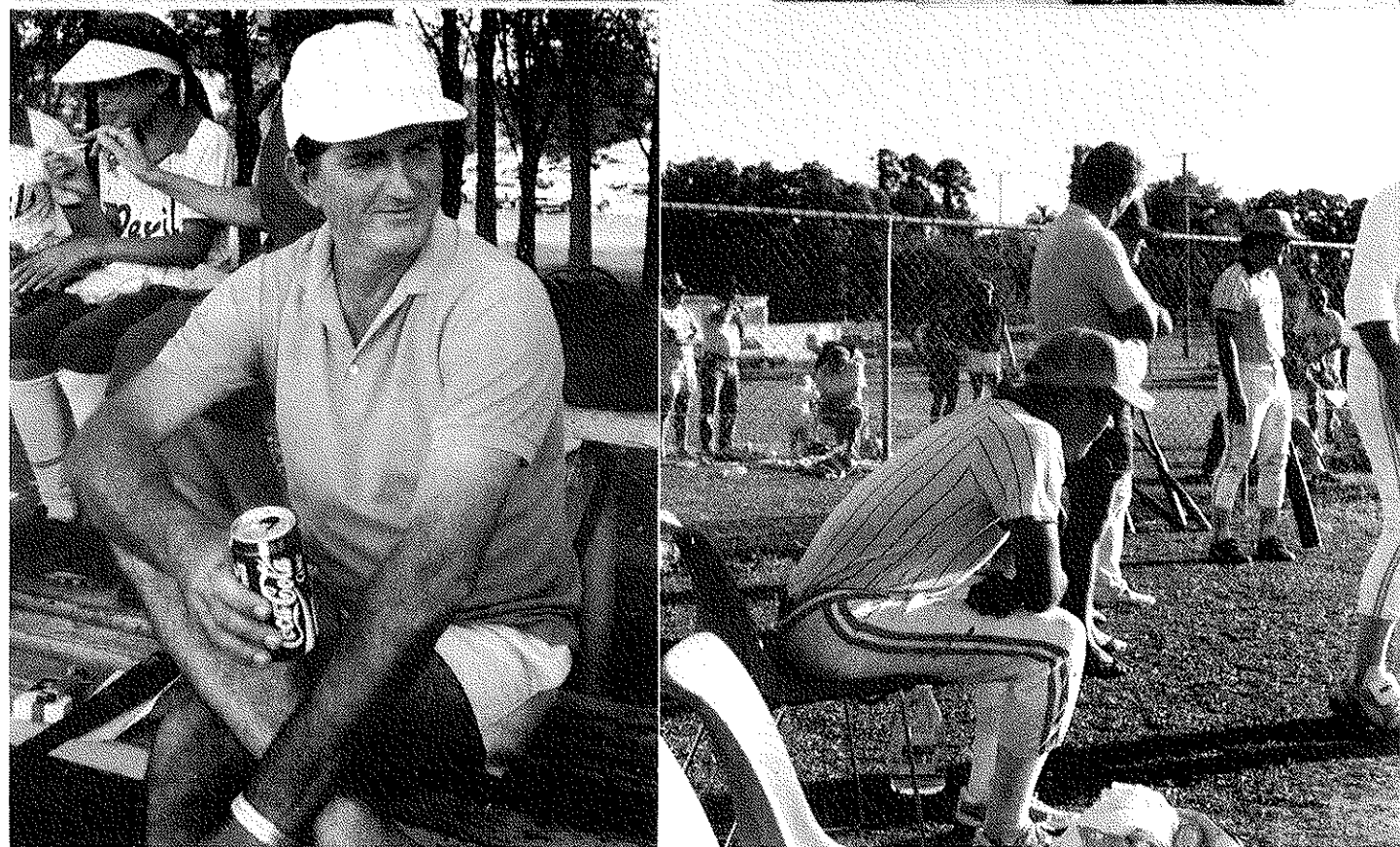
Sincere thanks to my mother, Robyn Gillinder, for helping me out when I was ready to tear my hair out.



GREAT SEASON GIRLS

Love,

CROWPECK TRACEY.



## REGISTRARS' REPORTS

This year the club fielded 5 Senior and 7 Junior teams including one Nightball team and we registered 111 players.

The A3, Under 14B and Under 12A teams were Premiership Runners-Up, with B1 and Under 14B being Minor Premiers. Congratulations also to the Under 12B team, who received the Shield for being First Round Leaders in their Division.

This was the first year since 1973 that Devils has not been able to field a Tee Ball team, though we hope this will be rectified in 1989/90.

A big thank you to Margaret Mountney, who though not elected onto the Committee as such, did a job which remarkably resembled that of Senior Registrar (all that and Brian's Leaning Post too!)

A very warm thanks must go to the scorers who gave up their mornings or tore from diamond to diamond doing 5 games in the afternoon's 3 timeslots. NuSports are now offering considerable discounts on running shoes to be used for just this purpose.

The list of unsung heroes includes Anne Morton, Anne Gerhardt, Robyn Gillinder, Maxene Whittles, Fay Fraser, Tracey Wyatt, Margaret Mountney, Mary Kelly, Jan Buckley and Lyn Mellish.

Hope to see you all again next season.

*Paula and Clayton.*

## *Junior Sports Achievement Awards*

SINCERE THANKS TO THE MANAGEMENT OF HUNGRY JACK'S, KEDRON, FOR THEIR GENEROSITY IN PROVIDING THESE AWARDS THROUGHOUT THE SEASON.



## ACKNOWLEDGEMENTS

Thanks once again to the Coaches for their time in providing these reports. Thankfully this year I didn't have to hassle too much. My sincere thanks to my friend, Beryl, who helped through a few difficult days with this production. To Anne Morton, Gary Ogg, Fay Fraser, Craig Paterson and Ron Gillinder, who provided photos for this issue. Particularly Craig who went to considerable expense and worry over getting the "right" shots.

## MANAGEMENT - 1988/89 SEASON

PATRON	KEN GADDES SNR.
PRESIDENT	BOB GANNON
SENIOR VICE PRESIDENT	BRIAN MOUNTNEY
JUNIOR VICE PRESIDENT	CRAIG PATERSON
HONORARY SECRETARY	DIANE PATERSON
HONORARY TREASURER	ANNE MORTON
EQUIPMENT OFFICER	TOM MURPHY (BRIAN and CRAIG)
UNIFORM OFFICER	RON CLANCY
CLUB RECORDERS - SENIOR	MARGARET MOUNTNEY
JUNIOR	PAULA WARNER
COMMITTEE MEMBERS	SHARON MOUNTNEY JEFF MORTON KEITH MOORE ANNE and JEFF MORTON TONY WHITTRED BILL and NGAIRE HUSTON ELAINE ROBINSON SANDRA FORD (GADDES) ISABEL TEGNER SHIRLEY POLLOCK ROBYN GADDES
MENS SUB-COMMITTEE	
LIFE MEMBERS	

Management is always looking for new faces and different ideas - maybe this coming season is your turn to do a twelve month's stint for the good of YOUR club. Get your nominations in early, folks, the A.G.M.'s fast approaching and you might miss out!

**ANNUAL GENERAL MEETING** MONDAY, 24TH APRIL, 1989

from 7.15 p.m. KEDRON SPORTING CLUB ALL WELCOME



## FOCUS ON PLAYERS

### VICKI GANNON

Upon delving into the Archives of Devils Softball Club we find a member who has participated in club fixtures for nigh on 16 years - Victoria Gannon.

Starting her Devils softball career at the tender age of 21, Vicki donned a brown and fawn shirt, brown socks and brown knickerbockers - the same pair in fact that she tore the seat out of this season!

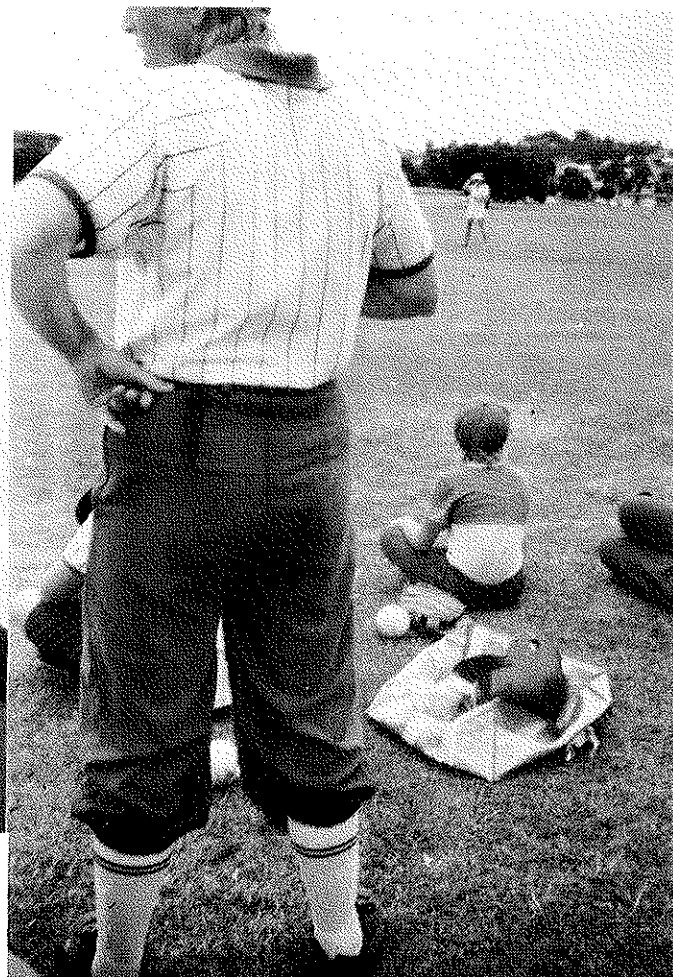
Vicki has played 194 games (excluding finals) in a variety of position from outfield to pitcher but seems to be most effective at First Base. Noticeably throughout the seasons has played an integral part in keeping a team united, if not as captain, then by leading by experience.

Playing from C Grade to A3, Vicki's batting ability has been excellent Batting at fourth position and alert for any possible walks, she has a very credible .500 this season.

The only years that Vicki has not played since she began was when pregnant with her 2 children, Damien and Allison, the latter of who will be playing for her first year in 1989/90 as a member of the T Ball side.

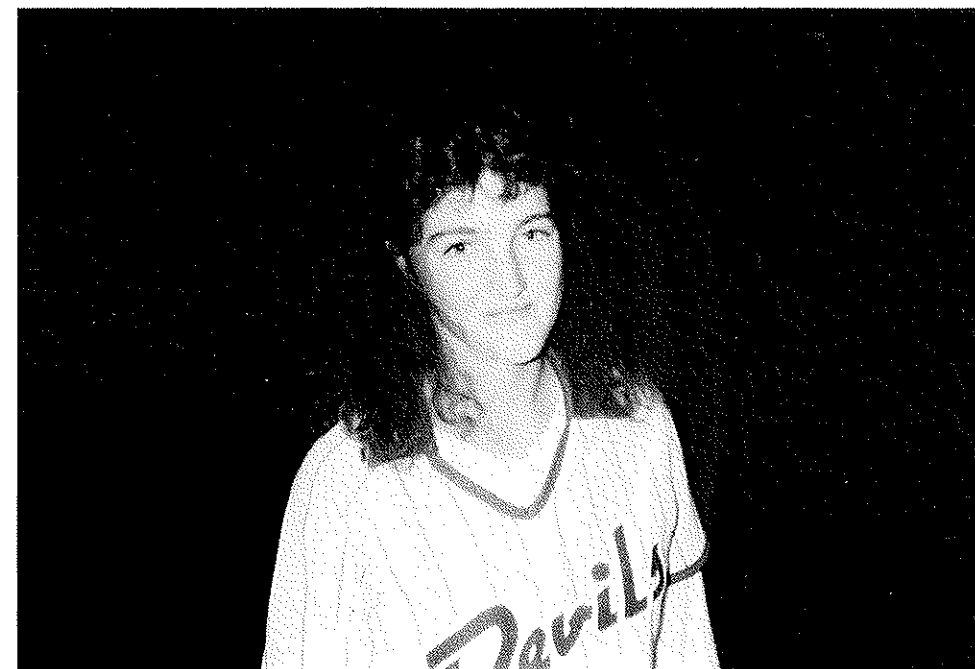
Special mention should also go to Bronwyn Miller (Moore) who has been in the club for 11 years with 133 games played and Paula Warner, 9 years and 107 games notched up.

Devils salutes the long standing players of our Club who, though playing in the lower grades, do not go unnoticed.



Yes folks, these are THE pants  
N.B. the dart left is self-opening  
as is the right cheek - Luv ya, Vic!

### LEAH MELLISH



Only the third club girl in the history of Devils to have gone through the ranks from T Ball to A1 is our own, Leah Mellish.

Starting with the Club in 1981 under the guidance of Joanne Greenwood (a premiership side), she showed ability as both catcher and outfielder throughout her early seasons; later moving into the infield as a strong and reliable short stop.

She began her career in T Ball as lead off batter and has maintained that degree of confidence to be amongst the top half of the line up since then.

Leah made the jump from 14A to A2 quite effectively, completing the end of last season with the A1's - reliable glove work being a feature of her game.

Leah has represented Brisbane many times throughout her career both with school girl and association levels.

This is a marvelous achievement considering Leah is not yet 17. Well done!

*Devils Softball Club*



PLAYER OF THE FUTURE

ALLISON WATERS

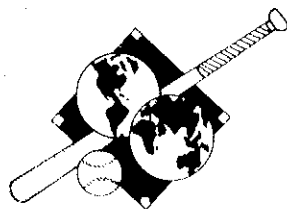


Allison started playing club softball in 1983/84 coming through the Junior ranks building a name for herself as a strong aggressive player both with the bat and in the field. Covering a range of positions from outfield to third and first bases, where she has come to her forté.

In the 1987/88 season, whilst still eligible to play Under 16, Allison was upgraded to A Reserve ranking, which she handled admirably, and has, this year, played in the A Grade Nightball.

Allison has been in numerous Brisbane Representative sides, making the Queensland Talent Squad in 87/88, then captaining the Queensland Under 16 Team in the Australian Championships in Perth this year.

We hope she'll enjoy the honour of being our Player of the Future.



PLAYER OF THE SEASON

STEPHANIE GILL



As we reported in 86-87, Stephanie has exceptional talent, which is proven here by her regaining the Player of the Season trophy for this a second time - a feat never before achieved by the illustrious cavalcade of softballers who have figured statistically in Devils' records over the years since the award's inauguration in 1979. (This doesn't mean you keep the big trophy though!)

Steph gained another record on 4 February, 1989 when she played her 100th A Grade Game for Devils against Saints. With four times at bat and three safe hits from them, she followed up with 4 put-outs and 2 assists before leaving the diamond.

A former Australian Under 19 Representative and winning team member in five Australian Championships from Under 16 to 19 and then Open, she has also topped Devils' averages in fielding and batting for two of the past three seasons.

The Club salutes you - Stephanie Gill - our Player of the Season.





JUNIOR CLUB GIRL

MELYNDA PATERSON



Melynda has been with Devils since 1982/83 where she competed in the T Ball side for her first year of Club softball.

A diminutive and unassuming girl, she worked her way through the ranks ever anxious to sit on the bench or substitute for other teams to gain experience.

When she took the jump into Under 16s and umpiring duties, she landed more than her fair share as her parents are the Umpire's Rosterers - you know what they say about not being able to choose one's Rellies!

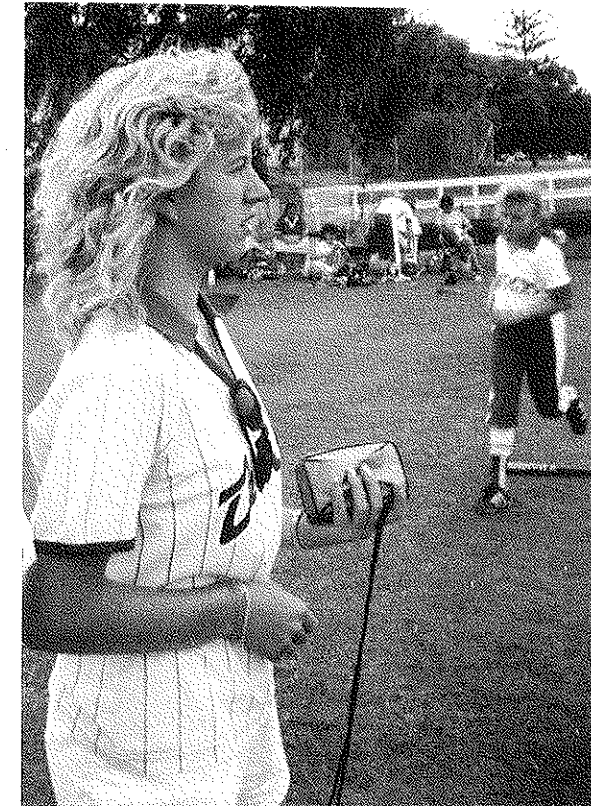
She has helped Tracey Gillinder with the coaching of the Under 12B side at training or, whenever needed, at games.

Whenever Canteen Duty looms, she is the first behind the counter. As is the life of most Committee Members and their families, she is out at the Park very early each Saturday willing to help wherever she can.

Thanks Melynda from all at Devils Softball Club.

SENIOR CLUB GIRL

TRACEY WYATT



Tracey has been involved with Devils Softball Club since 1984/85 where she caught in the Under 14A team who, incidentally were Premiers. From there Tracey jumped up the grades to the Seniors in A3 and B1 sides.

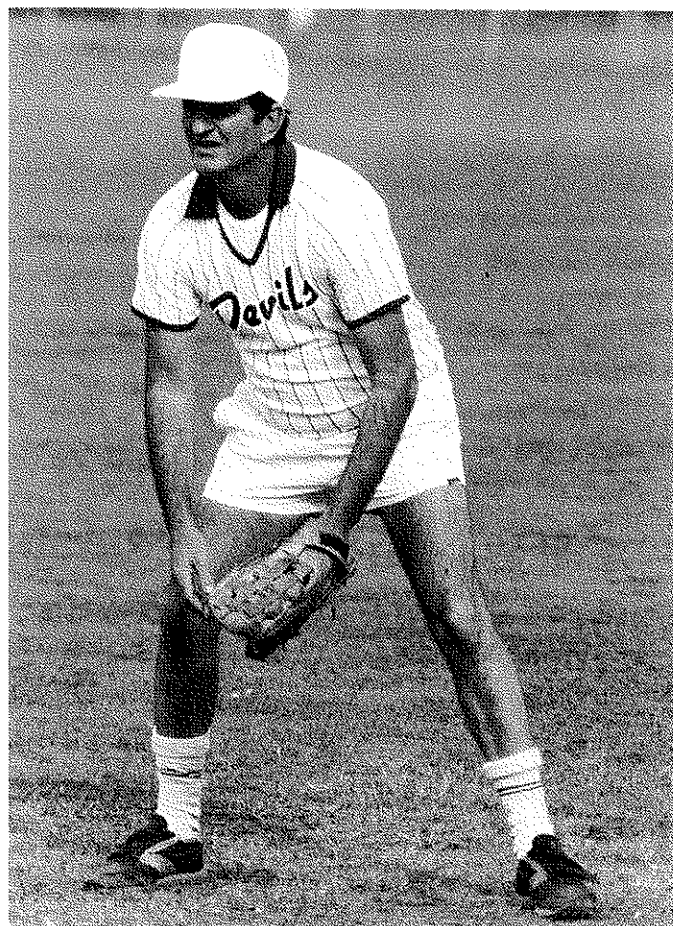
She has always worked hard for the Club, helping out in the Canteen, selling Raffle Tickets, etc, also sitting on the bench or playing for other teams when asked, including games with A1 and A2 this season.

Adding to Tracey's many facettted lifestyle, she co-coached the B Grade Mens Team off season as well as co-coaching the 12A's this year. When those teams needed a scorer on hand, Tracey would do them herself (self taught) also helping the Under 14's on occasion.

If anything is needed to be done, Tracey is always around and glad to give a hand. She is a true Club Girl working hard to better Devils and is our well deserved Senior Club Girl.

## CLUB PERSON OF THE YEAR

### BRIAN MOUNTNEY



Brian has been involved with Devils Softball Club since 84/85 after coming across from Panthers. Though he did not actually start participating till he was sure that Devils was quite ready for him.

Since 1987/88 Brian has entered the role of executive with a vengeance, taking on the position of Senior Vice President for the past two years and served on Brisbane Management this year as Devils representative (as his red and white shirts pointed out).

Brian can be found down the Park rustling up players for each and every side from juniors up, happily signing up all and sundry, who looked like they had any potential. In fact Brian was mostly responsible for there being an A Grade side this season.

Having a penchant for fund raising, he rapidly organised a Men's Fun Day at Kedron C.A.E. in April last year to help boost club funds. This and the Art Union did a lot for our credit and his.

He instituted Devils' participation at Lismore and, although it was cancelled this season, the work involved did not go unnoticed.

Brian, with his endless optimism and never ending work load, is a most deserved Club Person of the Year.

Hope to see the folder - whatever the colour - back again next year.

## TEAM OF THE YEAR

### UNDER 12B



Last year they said Under 12's again? Well this year the Under 12 are saying, we'll keep on keeping on. Tracey Gillinder's 12B's not only are a team accredited with a mighty .513 Batting Average, but were also First Round Leaders in their Division.

Starting this season unsure of a 12B side, Tracey managed to handle a full 15 players, with Susan Payne who assisted her at games and, towards the end of the season, Melynda Paterson, who helped her at training.

Tracey's second season coaching has proven to be very successful with the girls managing to hit a pitched ball with aggression.

Two other teams both deserved of a mention are the B1's with .457 and the 12A's with .437 including a massive 16 home runs.

A case of déjà vous for Tracey's Mum, Robyn, who's C1 team won this award in 1981.

Once again congratulations to the Under 12B's Coach and players.





TEAM TROPHY*(Donated by Mr. & Mrs. Pollock)*

1978	C1	
1979	U14B	
1980	U12B	.389
1981	C1	.441
1982	U16B	.501
1983	B3	.392
1984	U12A	.396
1985	U12A	.465
1986	U12A	.442
1987	U12B	.421
1988	U12A	.447
1989	U12B	.513

TROPHY WINNERS1988/89A1

Most Valuable Player	Stephanie Gill
Most Valuable Offensive Player	Selina Raiteri
Most Valuable Defensive Player	Tina Corbett

A2U16B

Best Batter	Paula Warner	Most Consistent	Tania Butterworth
Best Fielder	Susan Johnson	Most Improved	Donna Burley
Most Valuable	Sharon Mountney	Encouragement Award	Nicole Tinney

A3U14A

Most Consistent	Alison Kelly	Most Valuable Player	Michelle Vernon
Most Valuable	Kathy Smallcombe	Most Valuable Defensive Player	Kym Huddart
Best Team Player	Elizabeth Buckley	Most Valuable Offensive Player	Kim Andrew

B1

Most Valuable	Diane Feldman
Most Consistent	Donna Penney
Best Team Player	Vicki Gannon

U14B

Most Valuable	Melissa Fraser
Most Consistent	Jodi Hurford
Most Outstanding	Nicole Lamb

U12A

Most Consistent	Susan Oliphant
Most Improved	Bernadette Jagger
Best Batter	Britt Martin

U12B

Most Improved	Trina Bechly
Most Dedicated	Trisha Robinson
Most Consistent	Jenny Butler

U16A

Most Valuable Team Player	Karla Manning Christine Kriedemann
Most Consistent	Terrine Hull

1988/89 PRESENTATION NIGHT7TH APRIL, 1989PLAYER OF THE SEASON*(Donated by Mr. & Mrs. Webb)*

1979	DIANE LOWRY
1980	CAROLINE GRICE
1981	JOYCE LESTER
1982	PATRICE WEBB
1983	SUE KNIGHT
1984	LEIGH GLEADHILL
1985	KRISSY DICKMAN
1986	MARIE GOYDER
1987	STEPHANIE GILL
1988	SHELLEY PAYNE
1989	STEPHANIE GILL

PLAYER OF THE FUTURE*(Donated by Mr. Rooney)*

1977	HEATHER SYMINGTON
1978	CAROLINE GRICE
1979	PATRICE WEBB
1980	MELINDA SHORTEN
1981	KAREN MOORE
1982	TONI SMITH
1983	SHARON CUNNINGTON
1984	ALLISON TALBOT
1985	SHELLEY PAYNE
1986	CARRIE MacCARTHY
1987	KEANNE MOUNTNEY
1988	ELIZABETH BUCKLEY
1989	ALLISON WATERS

JUNIOR CLUB GIRL*(Donated by Mrs. Clark)*

1979	JENNY CLARK
1980	KATRINA WEBB
1981	SHARON CUNNINGTON
1982	JODIE GADDES
1983	LEIGH MacCARTHY
1984	LAUREN GADDES
1985	CARRIE MacCARTHY
1986	LEANNE MOUNTNEY
1987	JANET HILL
1988	TRACEY GILLINDER
1989	MELYNDA PATERSON

SENIOR CLUB GIRL*(Donated by Mrs. Tegner)*

1979	PATTI WALKER
1980	DEBBIE McCOLM
1981	JOANNE GREENWOOD
1982	LESLEIGH GUMM
1983	SANDRA SALE
1984	SANDRA FORD
1985	SYLVIA VAN DER VALK
1986	JANETTE SMITH
1987	SHARON MOUNTNEY
1988	ANNE MORTON
1989	TRACEY WYATT

CLUB PERSON OF THE YEAR*(Donated by Murray Gale)*

1982	ROBYN GADDES
1983	MARILYN GUMM
1984	DUDLEY GALE
1985	KEN GADDES SNR.
1986	BARRY GLEADHILL
1987	PAULA WARNER
1988	ROBYN GILLINDER
1989	BRIAN MOUNTNEY

The End.

