



**The East Fremantle Women's Football Club (EFWFC)** is seeking expressions of interest from suitably qualified applicants for the position of EFWFC Division One Coach. This key coaching role within the East Fremantle female football pathway, play's an integral role in developing player ability and understanding of the game, whilst participating in the West Australian Women's Football League (WAWFL) Division One Competition.

This position will be required to work closely with the EFWFC Senior Coach to set and implement coaching structures, game plans and effective training sessions.

To be considered for this role, you will need to demonstrate proven experience in developing team and player skills and knowledge, with excellent communication and leadership skills. Experience in coaching female athletes would be advantageous.

Suitable applicants will possess;

People Management:

- Capacity to effectively manage players and staff
- Possess strong conflict resolution skills
- Excellent interpersonal skills

Football Knowledge:

- Strong knowledge of coaching techniques / strategies
- Sound understanding of skill development learning strategies
- Commitment to ongoing personal development in the area of coach education
- Ability to identify a winning game plan, demonstrating successful implementation strategies
- Sound knowledge of WAWFL and WA female player pathway or willingness to learn

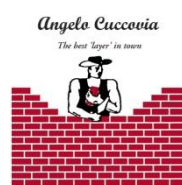
Effective Communication:

- Highly developed communication (written, verbal, visual) skills.

Qualifications:

- Minimum Level 1 coach accreditation or evidence of working to complete course

Please send applications to Football Operations Officer Ashleigh Brinkhuizen [Ashleigh.Brinkhuizen@correctiveservices.wa.gov.au](mailto:Ashleigh.Brinkhuizen@correctiveservices.wa.gov.au). Applications close COB Friday January 13<sup>th</sup> 2012.



[east.fremantle@wawfl.com.au](mailto:east.fremantle@wawfl.com.au)